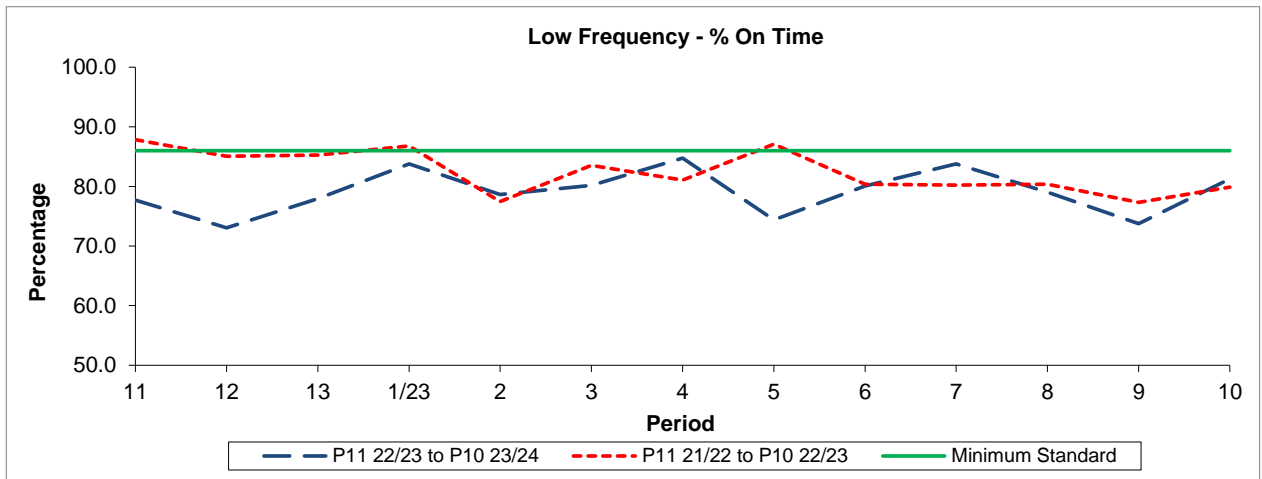


QSI & Mileage Performance Results

Route 456

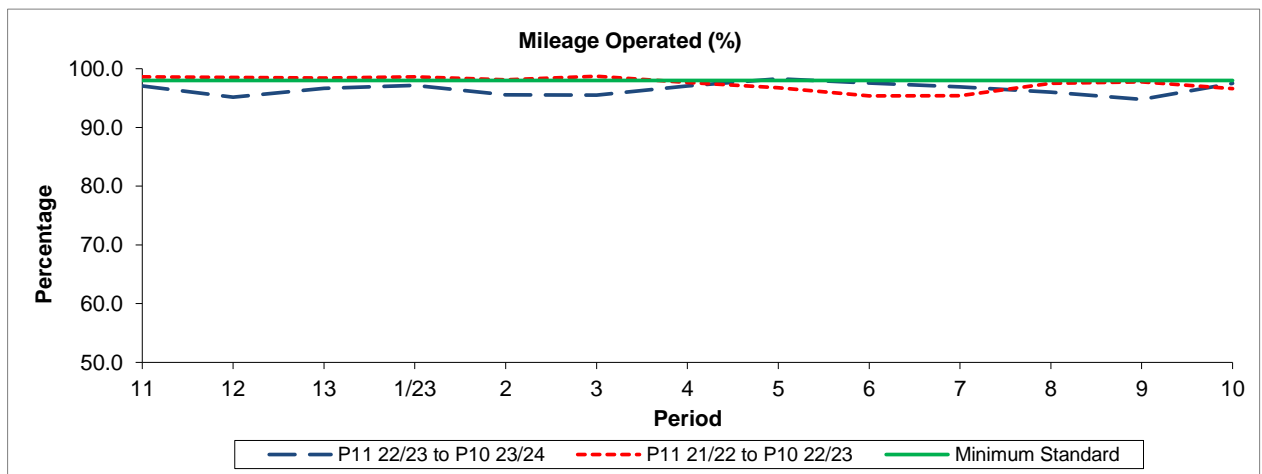
Reliability Performance



Period	11	12	13	1/23	2	3	4	5	6	7	8	9	10
P11 22/23 to P10 23/24	77.70	73.06	77.95	83.78	78.62	80.19	84.75	74.41	80.10	83.77	79.04	73.77	81.27
P11 21/22 to P10 22/23	87.84	85.05	85.26	86.78	77.45	83.54	81.08	87.09	80.36	80.22	80.39	77.33	79.88
Minimum Standard	86.00	86.00	86.00	86.00	86.00	86.00	86.00	86.00	86.00	86.00	86.00	86.00	86.00

% On Time performance figures are based on four weeks data

Mileage Performance



Period	11	12	13	1/23	2	3	4	5	6	7	8	9	10
P11 22/23 to P10 23/24	97.05	95.14	96.64	97.17	95.56	95.51	97.08	98.28	97.56	96.92	96.02	94.78	97.51
P11 21/22 to P10 22/23	98.60	98.53	98.43	98.63	98.10	98.72	97.66	96.77	95.38	95.40	97.51	97.76	96.60
Minimum Standard	98.00	98.00	98.00	98.00	98.00	98.00	98.00	98.00	98.00	98.00	98.00	98.00	98.00

Mileage Performance figures are based on four weeks data