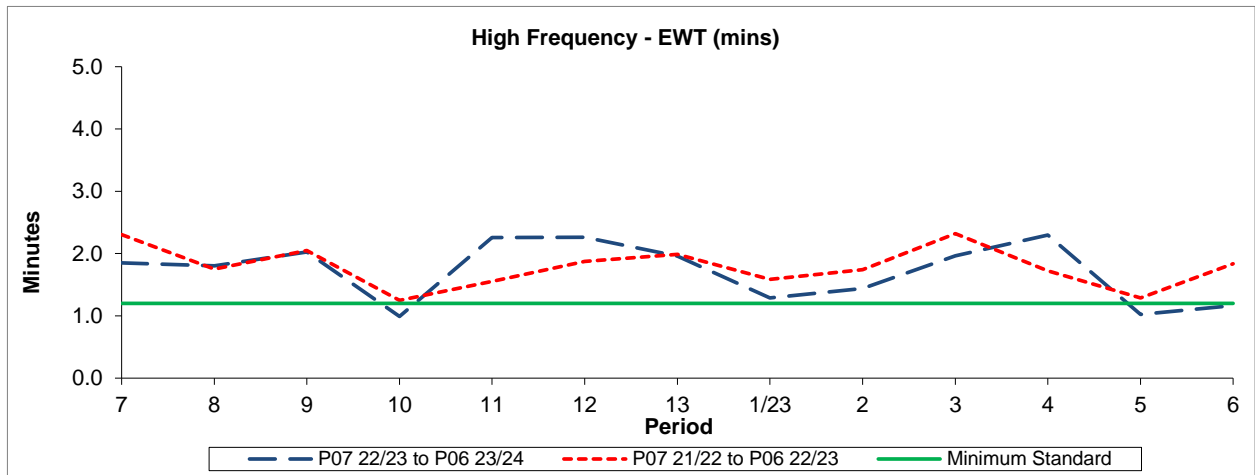


QSI & Mileage Performance Results

Route X140

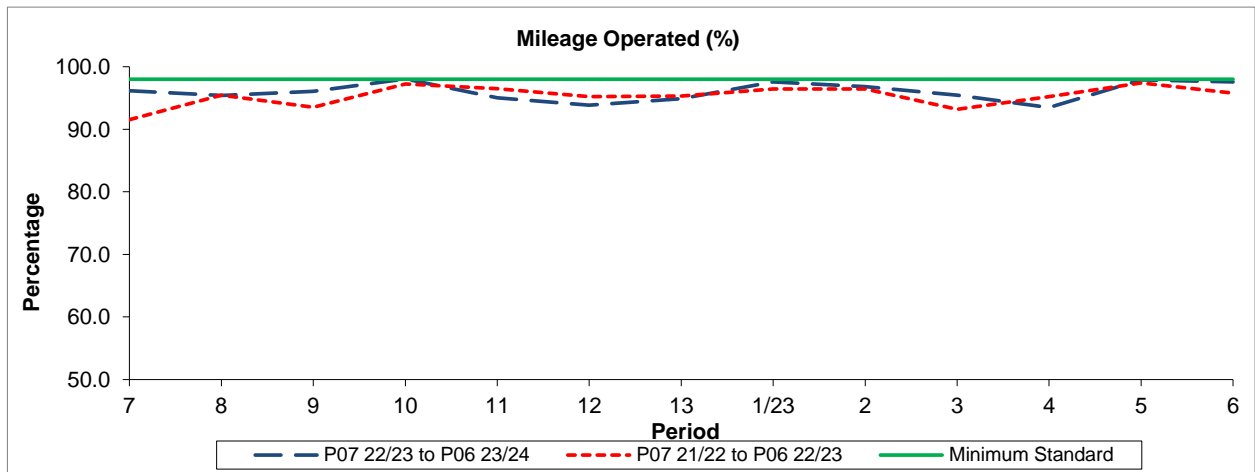
Reliability Performance



Period	7	8	9	10	11	12	13	1/23	2	3	4	5	6
P07 22/23 to P06 23/24	1.85	1.80	2.03	0.99	2.26	2.26	1.96	1.29	1.44	1.96	2.30	1.02	1.16
P07 21/22 to P06 22/23	2.31	1.75	2.05	1.25	1.55	1.88	1.99	1.58	1.74	2.32	1.72	1.29	1.84
Minimum Standard	1.20	1.20	1.20	1.20	1.20	1.20	1.20	1.20	1.20	1.20	1.20	1.20	1.20

The EWT (mins) figures are based on four weeks data

Mileage Performance



Period	7	8	9	10	11	12	13	1/23	2	3	4	5	6
P07 22/23 to P06 23/24	96.18	95.42	96.08	98.05	95.01	93.84	94.87	97.55	96.79	95.45	93.48	97.89	97.57
P07 21/22 to P06 22/23	91.54	95.45	93.51	97.23	96.50	95.23	95.30	96.43	96.46	93.18	95.21	97.41	95.79
Minimum Standard	98.00	98.00	98.00	98.00	98.00	98.00	98.00	98.00	98.00	98.00	98.00	98.00	98.00

Mileage Performance figures are based on four weeks data