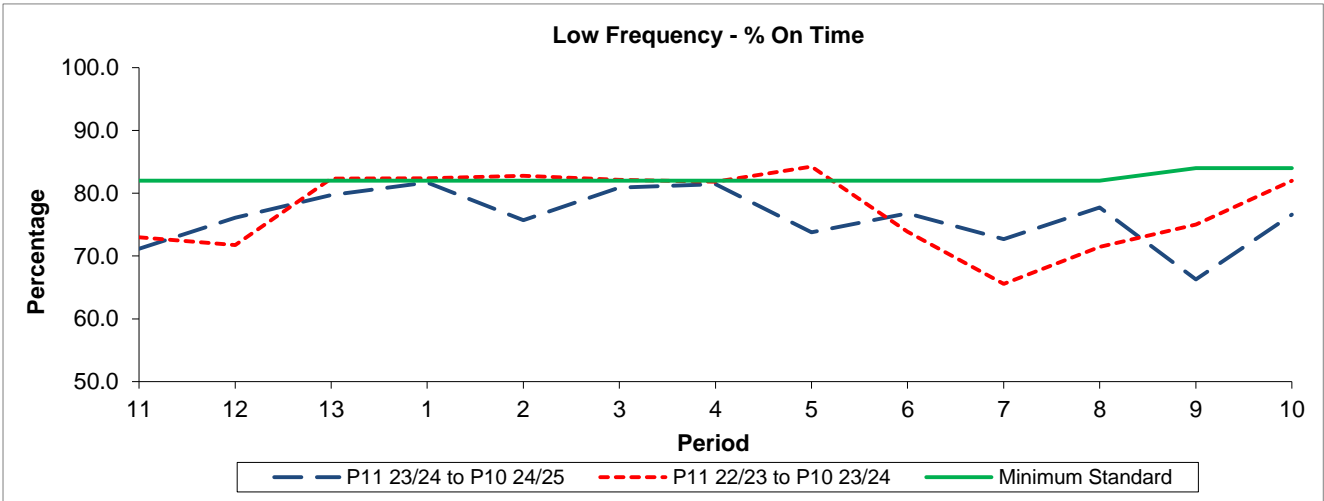


QSI & Mileage Performance Results

# Route U1

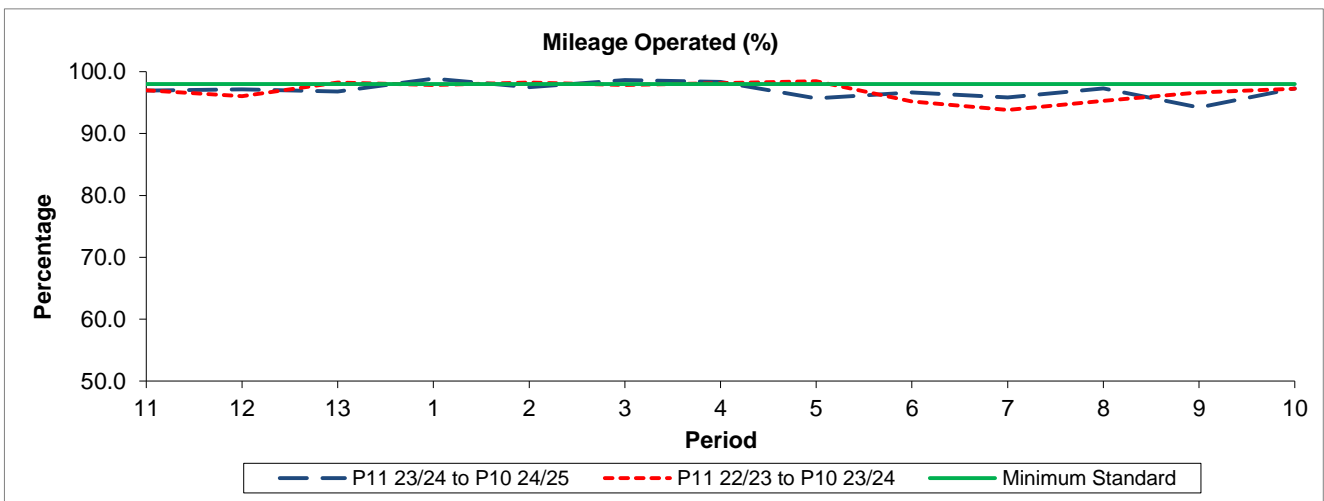
## Reliability Performance



Period	11	12	13	1	2	3	4	5	6	7	8	9	10
P11 23/24 to P10 24/25	71.17	76.08	79.72	81.71	75.73	80.92	81.46	73.80	76.78	72.68	77.73	66.28	76.60
P11 22/23 to P10 23/24	72.99	71.74	82.33	82.39	82.79	82.15	81.82	84.24	73.86	65.56	71.47	75.04	82.00
Minimum Standard	82.00	82.00	82.00	82.00	82.00	82.00	82.00	82.00	82.00	82.00	82.00	84.00	84.00

% On Time performance figures are based on four weeks data

## Mileage Performance



Period	11	12	13	1	2	3	4	5	6	7	8	9	10
P11 23/24 to P10 24/25	96.92	97.13	96.78	98.87	97.48	98.65	98.36	95.70	96.65	95.82	97.31	94.22	97.31
P11 22/23 to P10 23/24	97.01	96.04	98.26	97.86	98.23	97.85	98.16	98.46	95.18	93.81	95.26	96.66	97.26
Minimum Standard	98.00	98.00	98.00	98.00	98.00	98.00	98.00	98.00	98.00	98.00	98.00	98.00	98.00

Mileage Performance figures are based on four weeks data