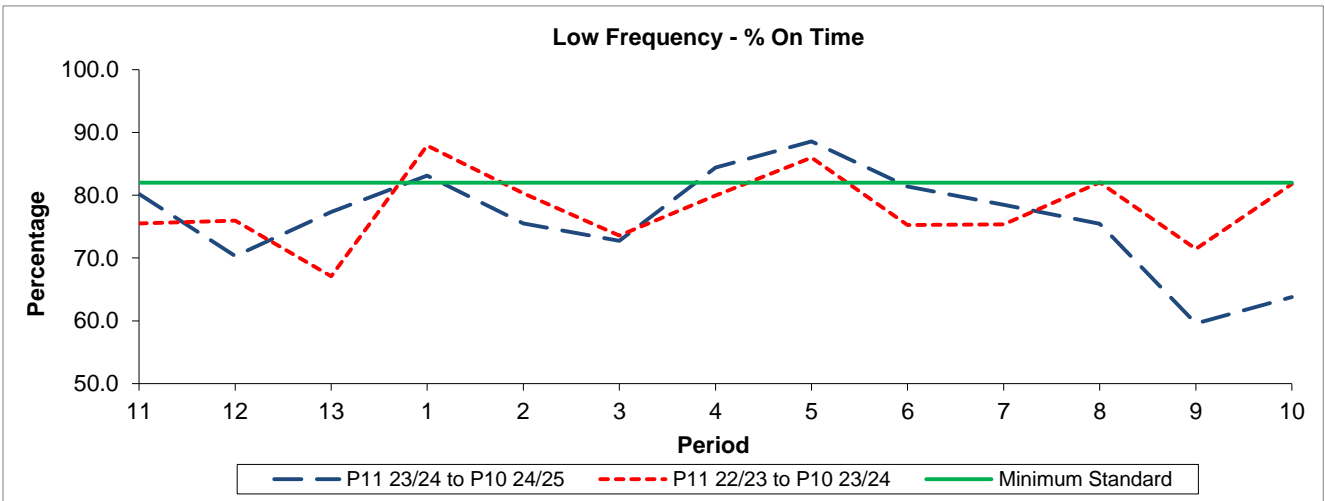


QSI & Mileage Performance Results

# Route R8

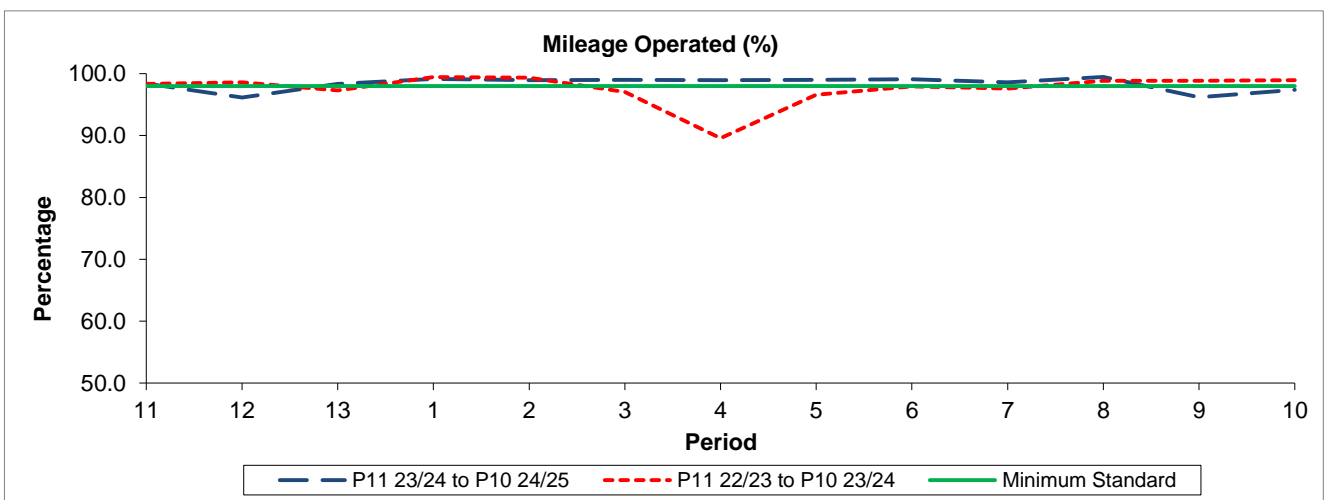
## Reliability Performance



Period	11	12	13	1	2	3	4	5	6	7	8	9	10
P11 23/24 to P10 24/25	80.21	70.30	77.35	83.10	75.50	72.72	84.43	88.57	81.38	78.50	75.48	59.58	63.81
P11 22/23 to P10 23/24	75.51	75.95	67.10	87.91	80.29	73.59	79.97	86.00	75.28	75.36	82.06	71.45	81.79
Minimum Standard	82.00	82.00	82.00	82.00	82.00	82.00	82.00	82.00	82.00	82.00	82.00	82.00	82.00

% On Time performance figures are based on four weeks data

## Mileage Performance



Period	11	12	13	1	2	3	4	5	6	7	8	9	10
P11 23/24 to P10 24/25	98.40	96.15	98.35	99.13	98.96	99.02	98.93	98.99	99.08	98.57	99.47	96.19	97.37
P11 22/23 to P10 23/24	98.37	98.59	97.27	99.45	99.36	97.03	89.57	96.59	97.97	97.61	98.86	98.87	98.94
Minimum Standard	98.00	98.00	98.00	98.00	98.00	98.00	98.00	98.00	98.00	98.00	98.00	98.00	98.00

Mileage Performance figures are based on four weeks data