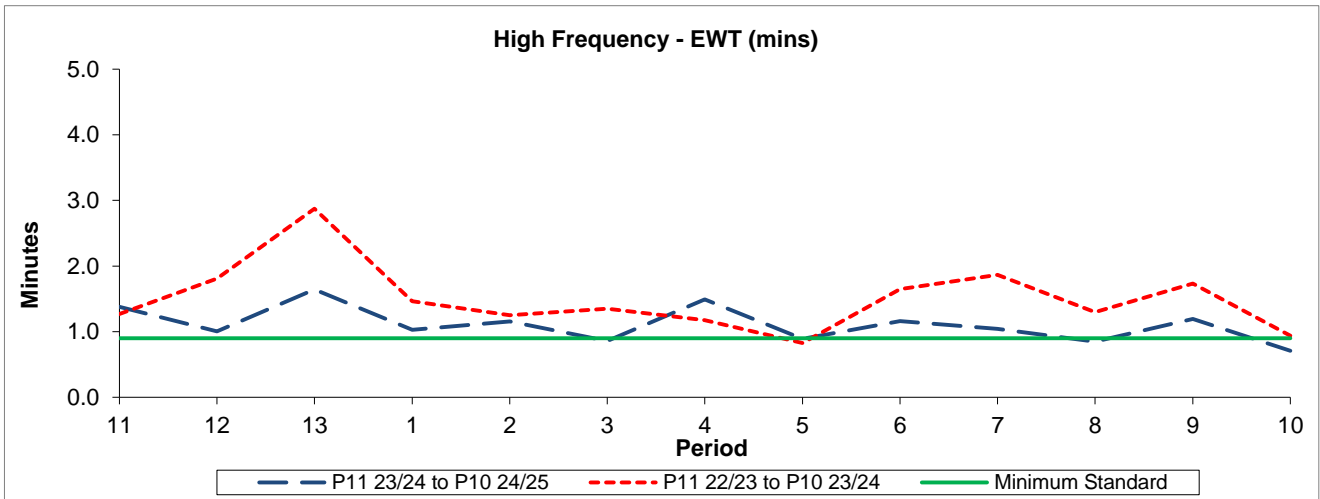


QSI & Mileage Performance Results

# Route R70

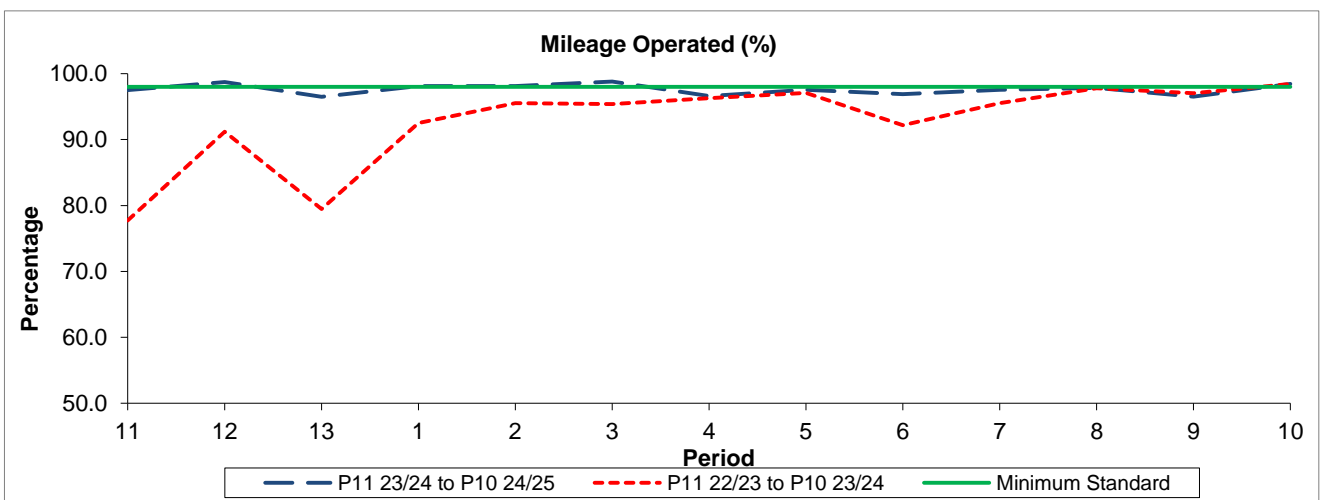
## Reliability Performance



Period	11	12	13	1	2	3	4	5	6	7	8	9	10
P11 23/24 to P10 24/25	1.38	1.00	1.64	1.03	1.16	0.86	1.49	0.89	1.16	1.04	0.85	1.19	0.71
P11 22/23 to P10 23/24	1.27	1.81	2.87	1.46	1.25	1.35	1.18	0.83	1.65	1.87	1.30	1.73	0.94
Minimum Standard	0.90	0.90	0.90	0.90	0.90	0.90	0.90	0.90	0.90	0.90	0.90	0.90	0.90

The EWT (mins) figures are based on four weeks data

## Mileage Performance



Period	11	12	13	1	2	3	4	5	6	7	8	9	10
P11 23/24 to P10 24/25	97.50	98.71	96.49	98.11	98.10	98.80	96.62	97.54	96.89	97.56	97.82	96.50	98.45
P11 22/23 to P10 23/24	77.73	91.18	79.47	92.50	95.53	95.40	96.26	97.08	92.19	95.51	97.78	97.03	98.44
Minimum Standard	98.00	98.00	98.00	98.00	98.00	98.00	98.00	98.00	98.00	98.00	98.00	98.00	98.00

Mileage Performance figures are based on four weeks data