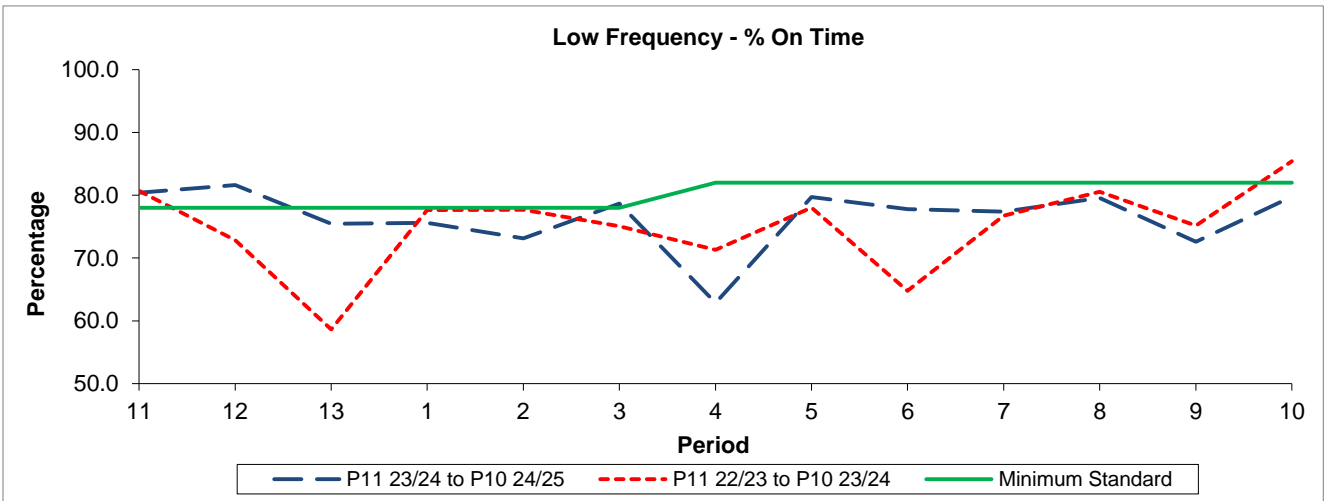


QSI & Mileage Performance Results

Route R68

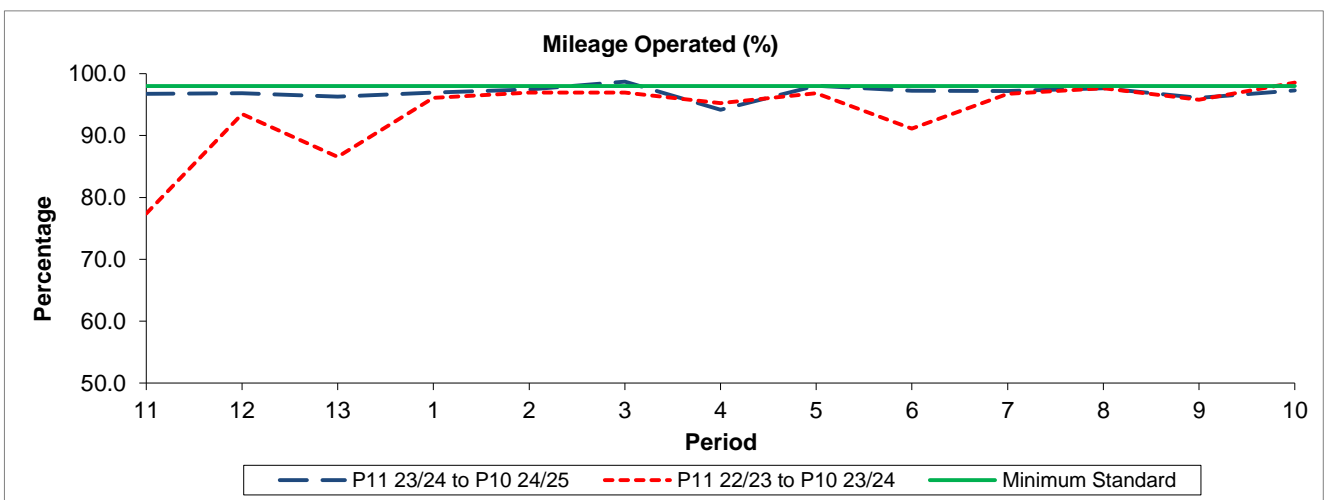
Reliability Performance



Period	11	12	13	1	2	3	4	5	6	7	8	9	10
P11 23/24 to P10 24/25	80.38	81.62	75.48	75.59	73.13	78.67	62.86	79.72	77.77	77.38	79.56	72.58	79.74
P11 22/23 to P10 23/24	80.70	72.83	58.63	77.65	77.69	75.06	71.33	78.04	64.80	76.74	80.54	75.14	85.42
Minimum Standard	78.00	78.00	78.00	78.00	78.00	78.00	82.00	82.00	82.00	82.00	82.00	82.00	82.00

% On Time performance figures are based on four weeks data

Mileage Performance



Period	11	12	13	1	2	3	4	5	6	7	8	9	10
P11 23/24 to P10 24/25	96.72	96.85	96.31	96.95	97.43	98.71	94.17	98.04	97.23	97.22	97.64	96.08	97.29
P11 22/23 to P10 23/24	77.39	93.48	86.58	96.09	96.93	96.95	95.22	96.86	91.12	96.75	97.66	95.78	98.56
Minimum Standard	98.00	98.00	98.00	98.00	98.00	98.00	98.00	98.00	98.00	98.00	98.00	98.00	98.00

Mileage Performance figures are based on four weeks data