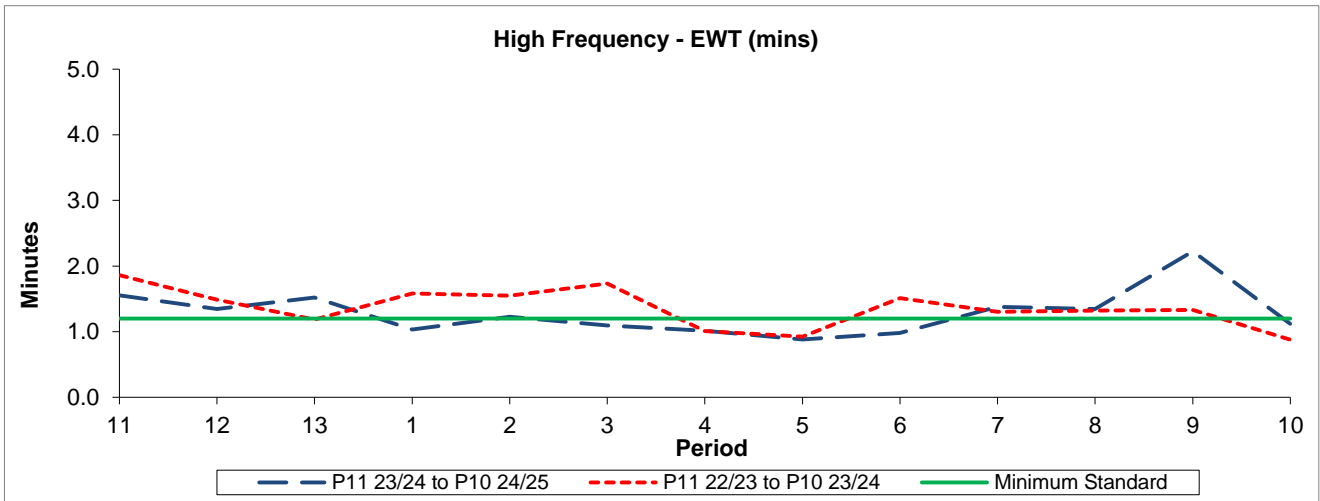


QSI & Mileage Performance Results

# Route P4

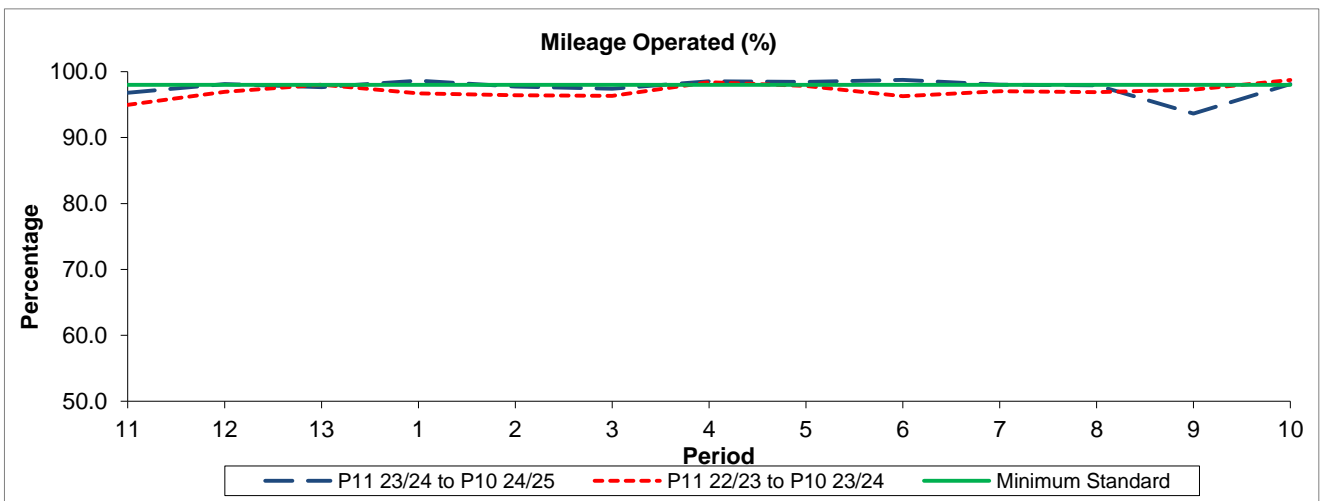
## Reliability Performance



Period	11	12	13	1	2	3	4	5	6	7	8	9	10
P11 23/24 to P10 24/25	1.55	1.34	1.52	1.03	1.23	1.10	1.02	0.88	0.98	1.38	1.35	2.22	1.12
P11 22/23 to P10 23/24	1.86	1.49	1.19	1.58	1.55	1.74	1.01	0.92	1.51	1.30	1.32	1.33	0.88
Minimum Standard	1.20	1.20	1.20	1.20	1.20	1.20	1.20	1.20	1.20	1.20	1.20	1.20	1.20

The EWT (mins) figures are based on four weeks data

## Mileage Performance



Period	11	12	13	1	2	3	4	5	6	7	8	9	10
P11 23/24 to P10 24/25	96.79	98.14	97.63	98.64	97.75	97.39	98.56	98.46	98.75	98.03	97.92	93.64	98.12
P11 22/23 to P10 23/24	94.96	96.92	98.03	96.69	96.42	96.33	98.39	97.85	96.29	97.02	96.88	97.28	98.73
Minimum Standard	98.00	98.00	98.00	98.00	98.00	98.00	98.00	98.00	98.00	98.00	98.00	98.00	98.00

Mileage Performance figures are based on four weeks data