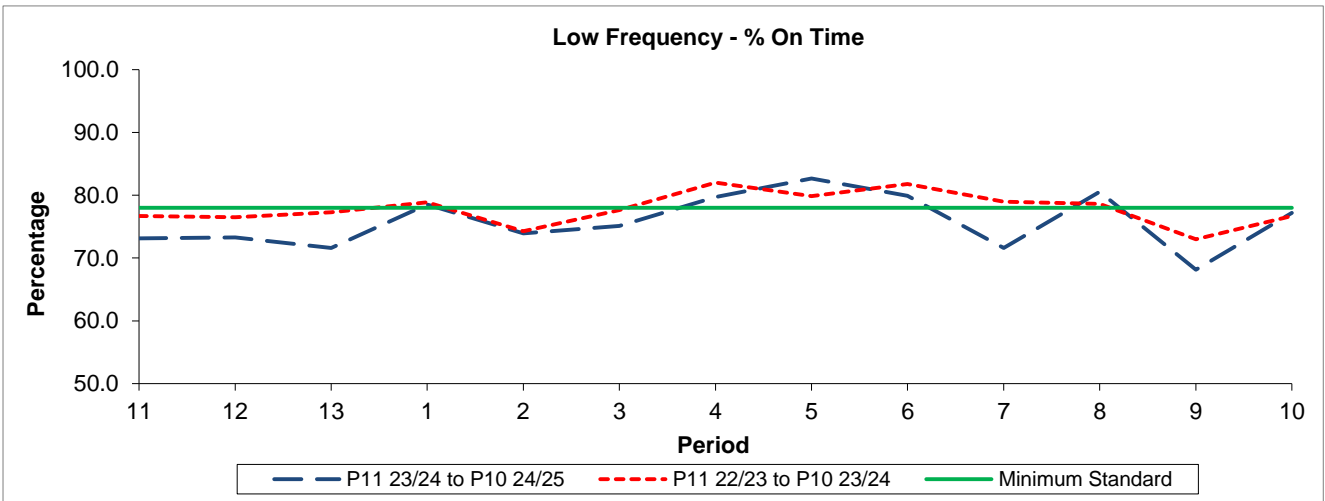


QSI & Mileage Performance Results

Route P13

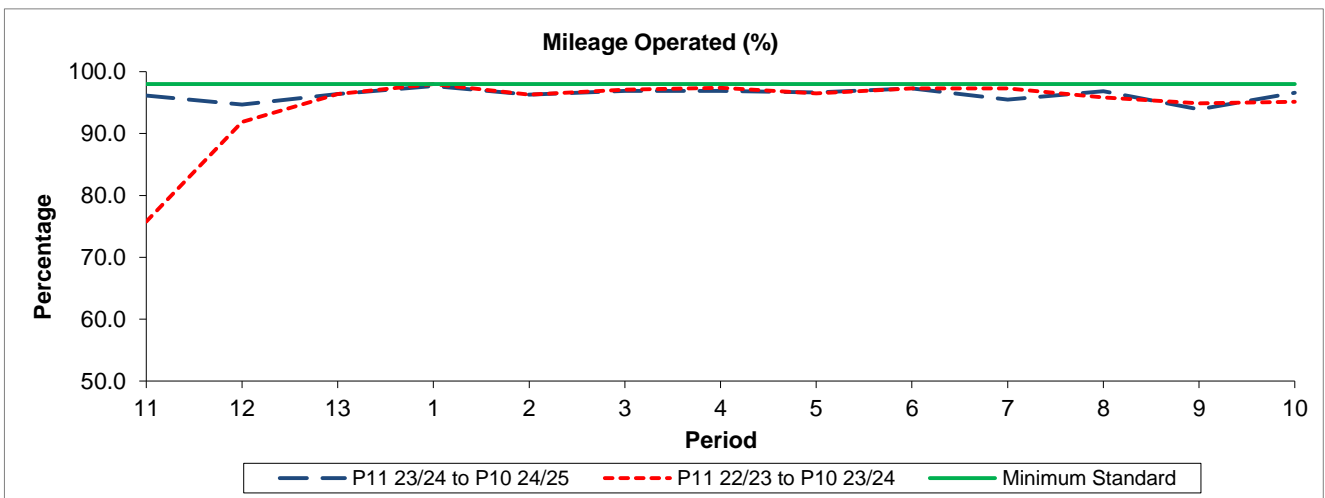
Reliability Performance



| Period | 11 | 12 | 13 | 1 | 2 | 3 | 4 | 5 | 6 | 7 | 8 | 9 | 10 |
|------------------------|-------|-------|-------|-------|-------|-------|-------|-------|-------|-------|-------|-------|-------|
| P11 23/24 to P10 24/25 | 73.13 | 73.27 | 71.60 | 78.53 | 73.94 | 75.10 | 79.71 | 82.67 | 79.93 | 71.60 | 80.57 | 68.14 | 77.17 |
| P11 22/23 to P10 23/24 | 76.69 | 76.50 | 77.27 | 78.87 | 74.27 | 77.62 | 82.01 | 79.87 | 81.81 | 78.96 | 78.62 | 72.99 | 76.69 |
| Minimum Standard | 78.00 | 78.00 | 78.00 | 78.00 | 78.00 | 78.00 | 78.00 | 78.00 | 78.00 | 78.00 | 78.00 | 78.00 | 78.00 |

% On Time performance figures are based on four weeks data

Mileage Performance



| Period | 11 | 12 | 13 | 1 | 2 | 3 | 4 | 5 | 6 | 7 | 8 | 9 | 10 |
|------------------------|-------|-------|-------|-------|-------|-------|-------|-------|-------|-------|-------|-------|-------|
| P11 23/24 to P10 24/25 | 96.16 | 94.71 | 96.40 | 97.67 | 96.28 | 96.91 | 96.88 | 96.64 | 97.28 | 95.50 | 96.86 | 93.91 | 96.61 |
| P11 22/23 to P10 23/24 | 75.77 | 91.86 | 96.39 | 98.00 | 96.27 | 97.07 | 97.39 | 96.49 | 97.31 | 97.30 | 95.85 | 94.87 | 95.13 |
| Minimum Standard | 98.00 | 98.00 | 98.00 | 98.00 | 98.00 | 98.00 | 98.00 | 98.00 | 98.00 | 98.00 | 98.00 | 98.00 | 98.00 |

Mileage Performance figures are based on four weeks data