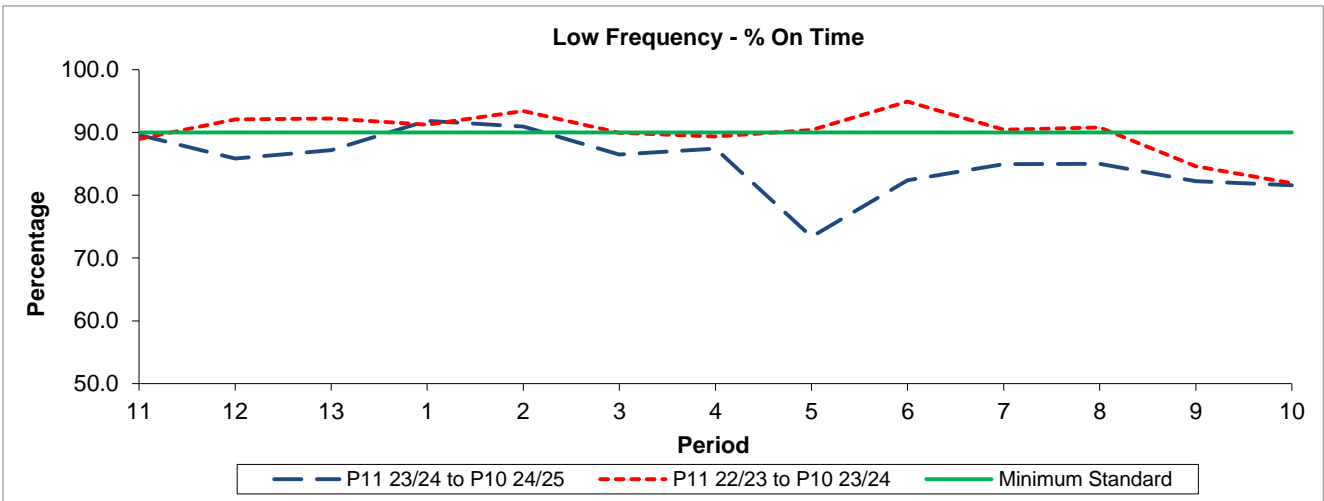


QSI & Mileage Performance Results

# Route N97

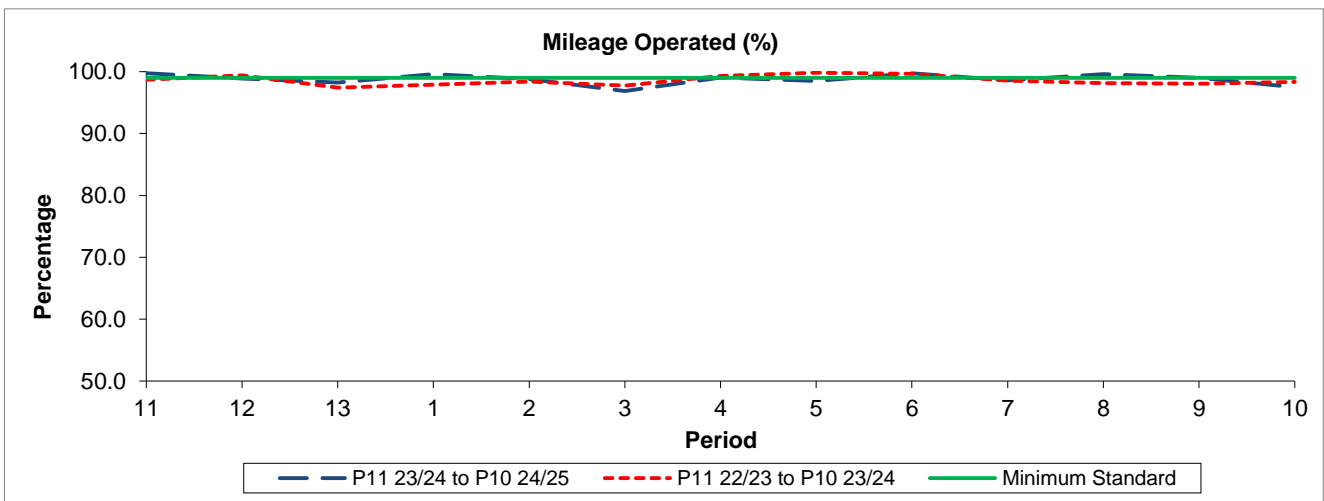
## Reliability Performance



Period	11	12	13	1	2	3	4	5	6	7	8	9	10
P11 23/24 to P10 24/25	89.58	85.85	87.15	91.85	90.94	86.48	87.40	73.38	82.37	84.94	84.99	82.25	81.57
P11 22/23 to P10 23/24	88.94	92.09	92.24	91.21	93.39	89.95	89.33	90.37	94.91	90.45	90.80	84.60	81.91
Minimum Standard	90.00	90.00	90.00	90.00	90.00	90.00	90.00	90.00	90.00	90.00	90.00	90.00	90.00

% On Time performance figures are based on four weeks data

## Mileage Performance



Period	11	12	13	1	2	3	4	5	6	7	8	9	10
P11 23/24 to P10 24/25	99.73	98.90	98.25	99.58	98.81	96.87	99.07	98.49	99.74	98.59	99.61	99.01	97.49
P11 22/23 to P10 23/24	98.71	99.39	97.42	97.91	98.42	97.77	99.28	99.83	99.65	98.55	98.12	98.03	98.36
Minimum Standard	99.00	99.00	99.00	99.00	99.00	99.00	99.00	99.00	99.00	99.00	99.00	99.00	99.00

Mileage Performance figures are based on four weeks data