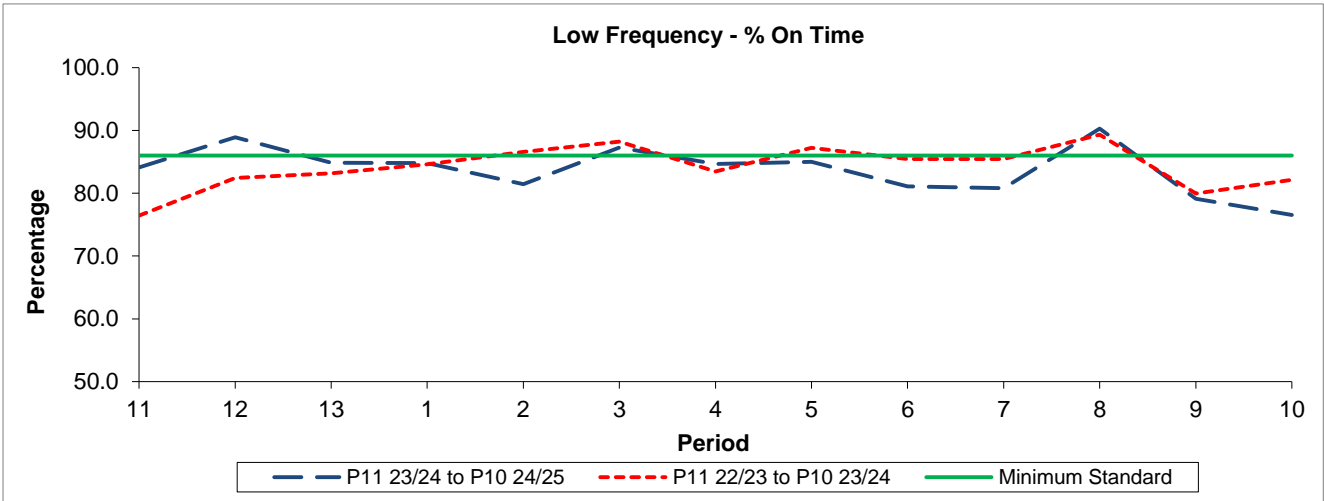


QSI & Mileage Performance Results

# Route N94

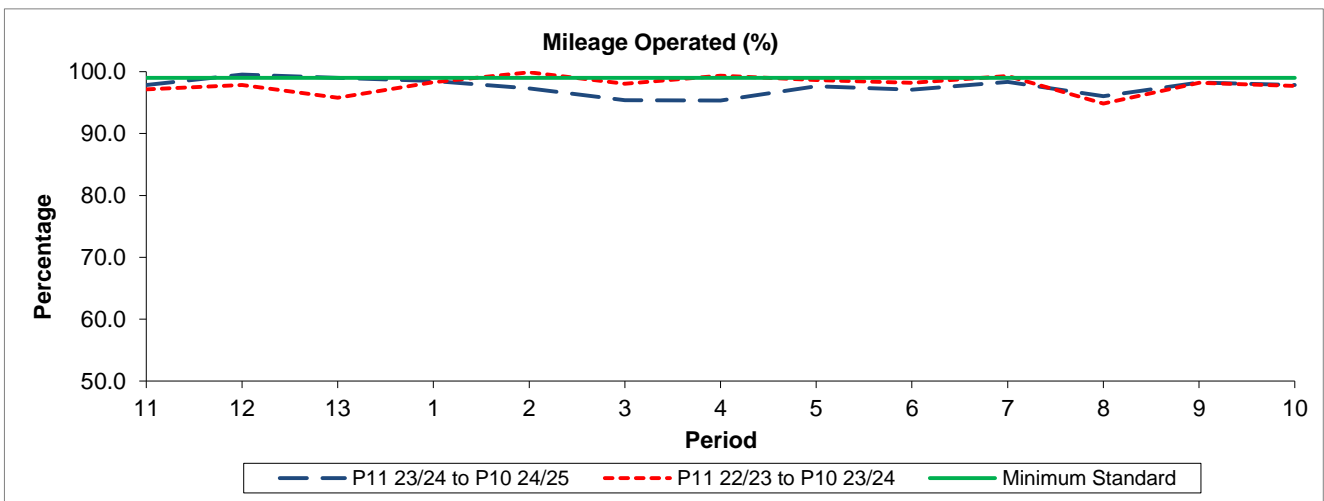
## Reliability Performance



Period	11	12	13	1	2	3	4	5	6	7	8	9	10
P11 23/24 to P10 24/25	84.13	88.90	84.84	84.83	81.44	87.26	84.67	85.01	81.08	80.82	90.29	79.13	76.54
P11 22/23 to P10 23/24	76.44	82.43	83.16	84.60	86.59	88.23	83.47	87.23	85.44	85.46	89.33	79.96	82.12
Minimum Standard	86.00	86.00	86.00	86.00	86.00	86.00	86.00	86.00	86.00	86.00	86.00	86.00	86.00

% On Time performance figures are based on four weeks data

## Mileage Performance



Period	11	12	13	1	2	3	4	5	6	7	8	9	10
P11 23/24 to P10 24/25	97.84	99.53	98.99	98.52	97.30	95.40	95.33	97.66	97.09	98.36	96.04	98.25	97.86
P11 22/23 to P10 23/24	97.12	97.85	95.79	98.30	99.90	98.05	99.35	98.64	98.20	99.29	94.84	98.22	97.68
Minimum Standard	99.00	99.00	99.00	99.00	99.00	99.00	99.00	99.00	99.00	99.00	99.00	99.00	99.00

Mileage Performance figures are based on four weeks data