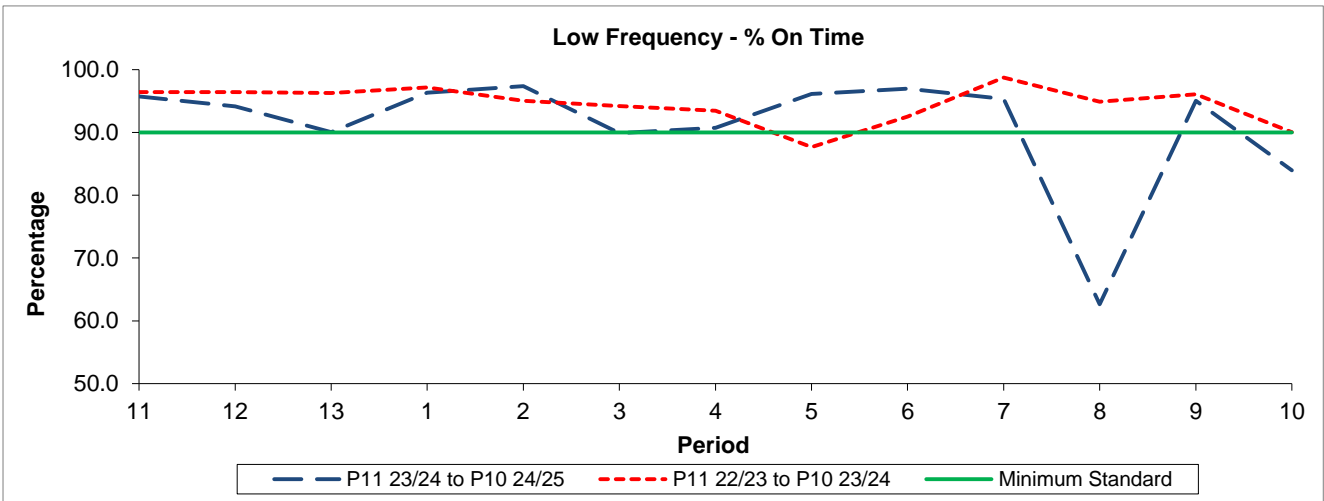


QSI & Mileage Performance Results

Route N93

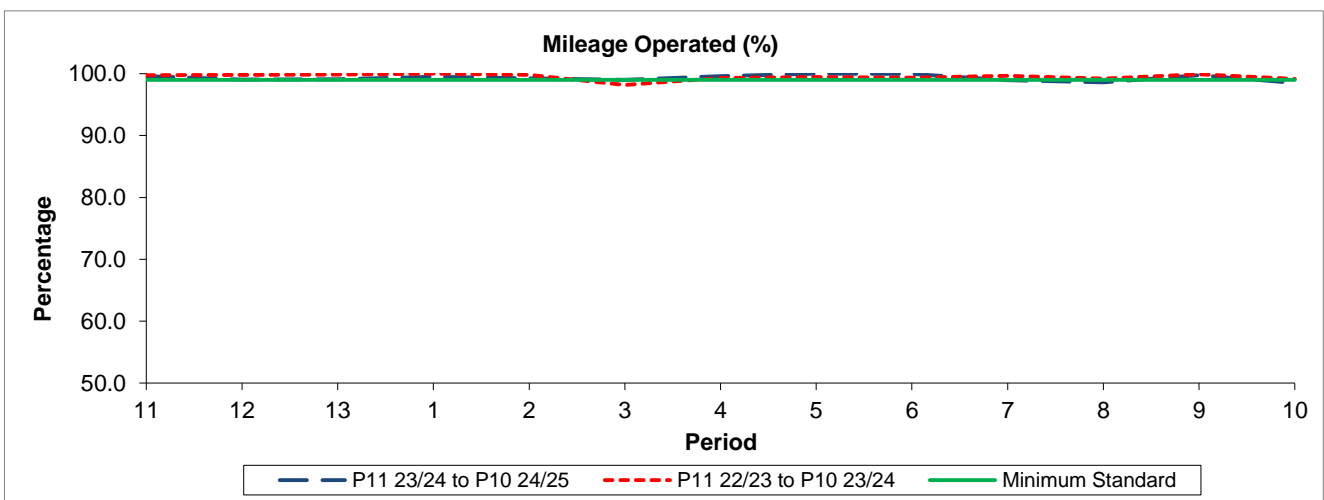
Reliability Performance



Period	11	12	13	1	2	3	4	5	6	7	8	9	10
P11 23/24 to P10 24/25	95.74	94.14	90.04	96.32	97.38	89.91	90.72	96.11	96.96	95.34	62.64	95.02	83.95
P11 22/23 to P10 23/24	96.43	96.44	96.26	97.17	95.06	94.22	93.48	87.67	92.51	98.74	94.88	96.09	90.06
Minimum Standard	90.00	90.00	90.00	90.00	90.00	90.00	90.00	90.00	90.00	90.00	90.00	90.00	90.00

% On Time performance figures are based on four weeks data

Mileage Performance



Period	11	12	13	1	2	3	4	5	6	7	8	9	10
P11 23/24 to P10 24/25	99.60	99.06	99.09	99.48	99.26	98.98	99.62	100.00	99.95	98.93	98.61	99.76	98.50
P11 22/23 to P10 23/24	99.74	99.79	99.84	100.00	99.80	98.17	99.29	99.43	99.36	99.66	99.21	99.92	99.14
Minimum Standard	99.00	99.00	99.00	99.00	99.00	99.00	99.00	99.00	99.00	99.00	99.00	99.00	99.00

Mileage Performance figures are based on four weeks data