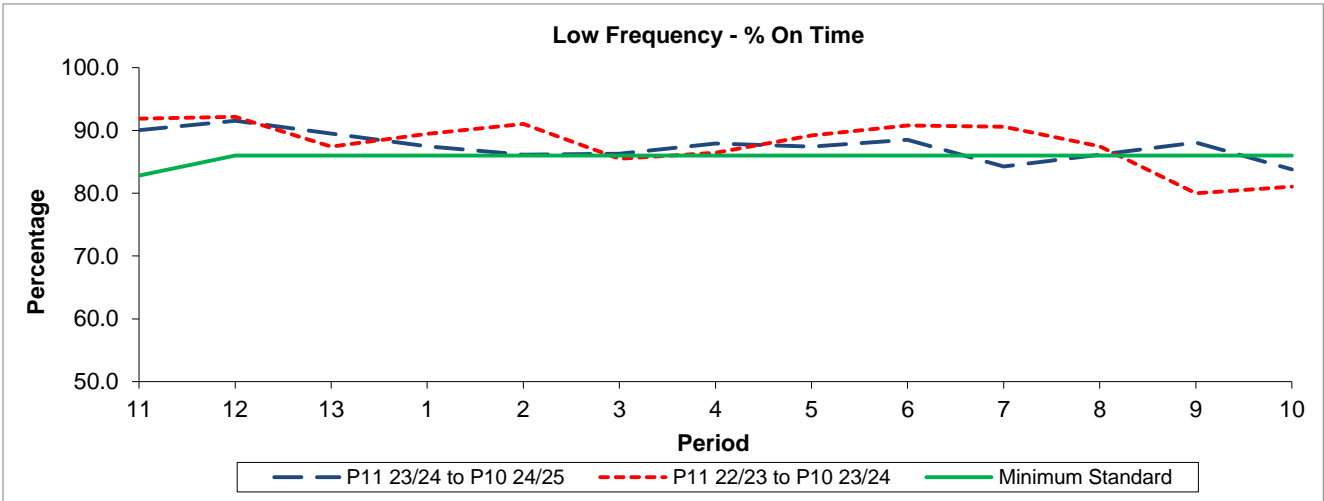


QSI & Mileage Performance Results

Route N89

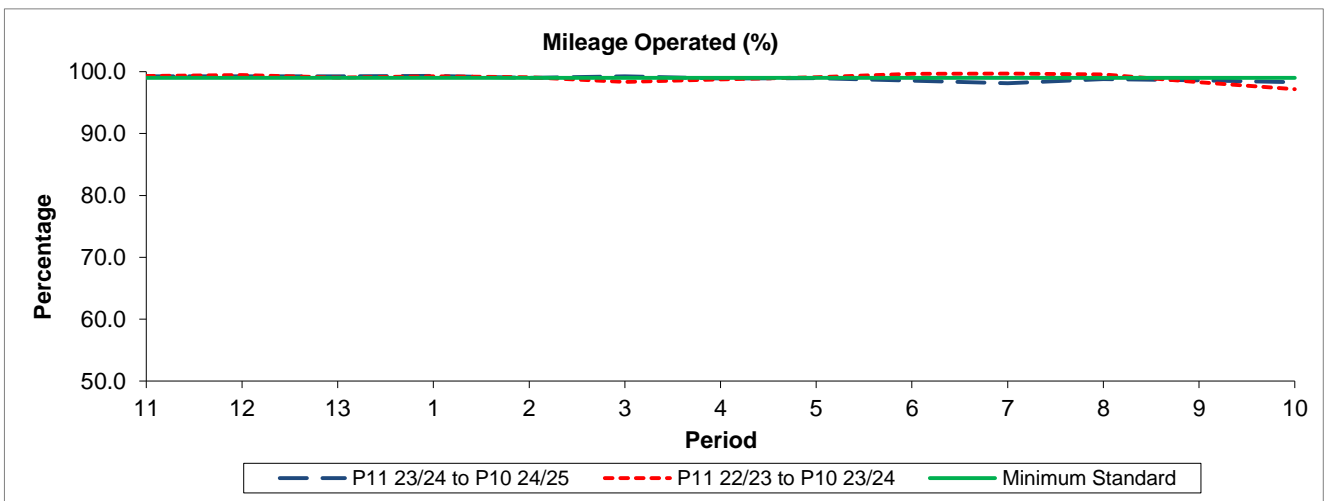
Reliability Performance



Period	11	12	13	1	2	3	4	5	6	7	8	9	10
P11 23/24 to P10 24/25	90.07	91.54	89.49	87.48	86.12	86.31	87.94	87.40	88.52	84.25	86.12	88.08	83.79
P11 22/23 to P10 23/24	91.90	92.17	87.43	89.47	91.04	85.50	86.42	89.20	90.77	90.60	87.45	79.99	81.05
Minimum Standard	82.81	86.00	86.00	86.00	86.00	86.00	86.00	86.00	86.00	86.00	86.00	86.00	86.00

% On Time performance figures are based on four weeks data

Mileage Performance



Period	11	12	13	1	2	3	4	5	6	7	8	9	10
P11 23/24 to P10 24/25	99.24	99.25	99.22	99.32	99.00	99.27	98.90	98.95	98.57	98.13	98.80	98.60	98.29
P11 22/23 to P10 23/24	99.32	99.43	99.04	99.27	99.08	98.34	98.73	99.10	99.63	99.69	99.54	98.32	97.17
Minimum Standard	99.00	99.00	99.00	99.00	99.00	99.00	99.00	99.00	99.00	99.00	99.00	99.00	99.00

Mileage Performance figures are based on four weeks data