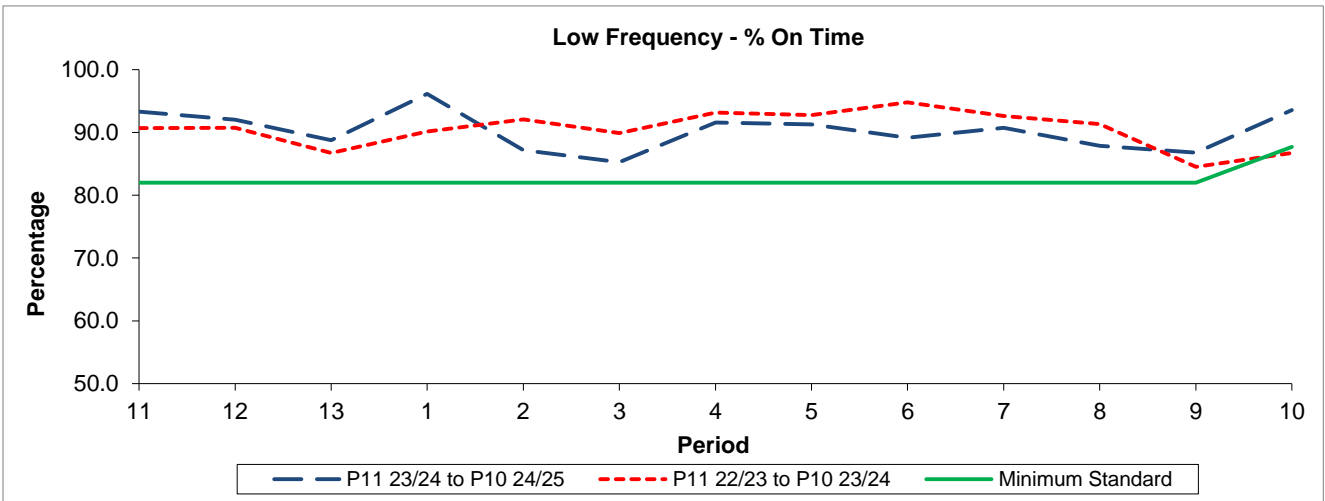


QSI & Mileage Performance Results

Route N88

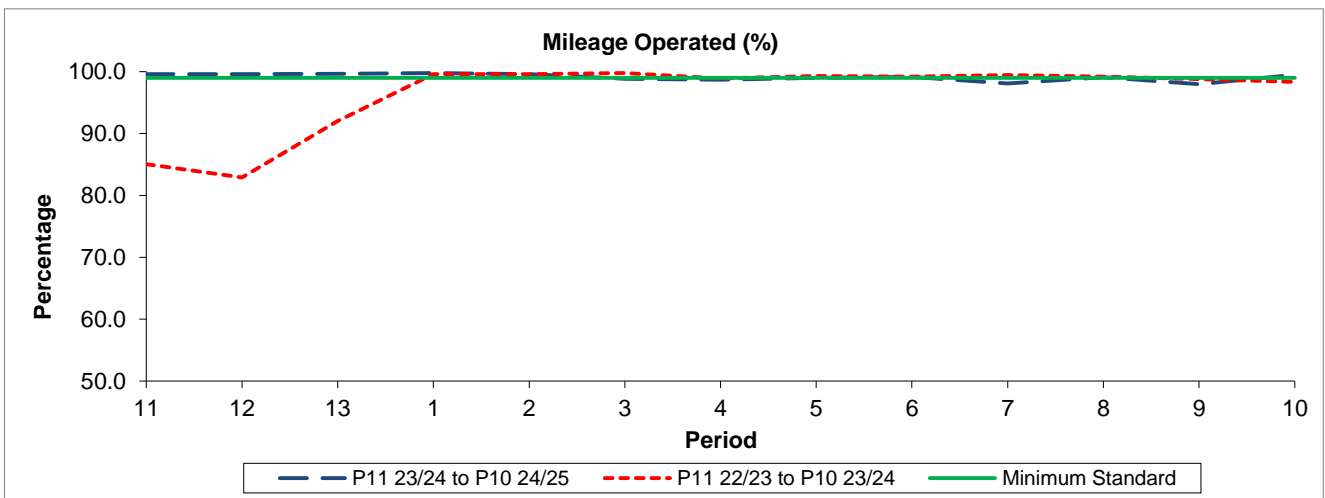
Reliability Performance



Period	11	12	13	1	2	3	4	5	6	7	8	9	10
P11 23/24 to P10 24/25	93.32	92.01	88.74	96.14	87.19	85.27	91.57	91.27	89.17	90.72	87.85	86.80	93.55
P11 22/23 to P10 23/24	90.69	90.72	86.75	90.17	92.09	89.91	93.18	92.74	94.79	92.62	91.33	84.52	86.73
Minimum Standard	82.00	82.00	82.00	82.00	82.00	82.00	82.00	82.00	82.00	82.00	82.00	82.00	87.70

% On Time performance figures are based on four weeks data

Mileage Performance



Period	11	12	13	1	2	3	4	5	6	7	8	9	10
P11 23/24 to P10 24/25	99.61	99.62	99.66	99.77	99.61	98.85	98.68	99.00	99.16	98.11	99.08	97.98	99.52
P11 22/23 to P10 23/24	85.07	82.90	92.01	99.58	99.59	99.78	98.89	99.32	99.21	99.45	99.21	98.79	98.33
Minimum Standard	99.00	99.00	99.00	99.00	99.00	99.00	99.00	99.00	99.00	99.00	99.00	99.00	99.00

Mileage Performance figures are based on four weeks data