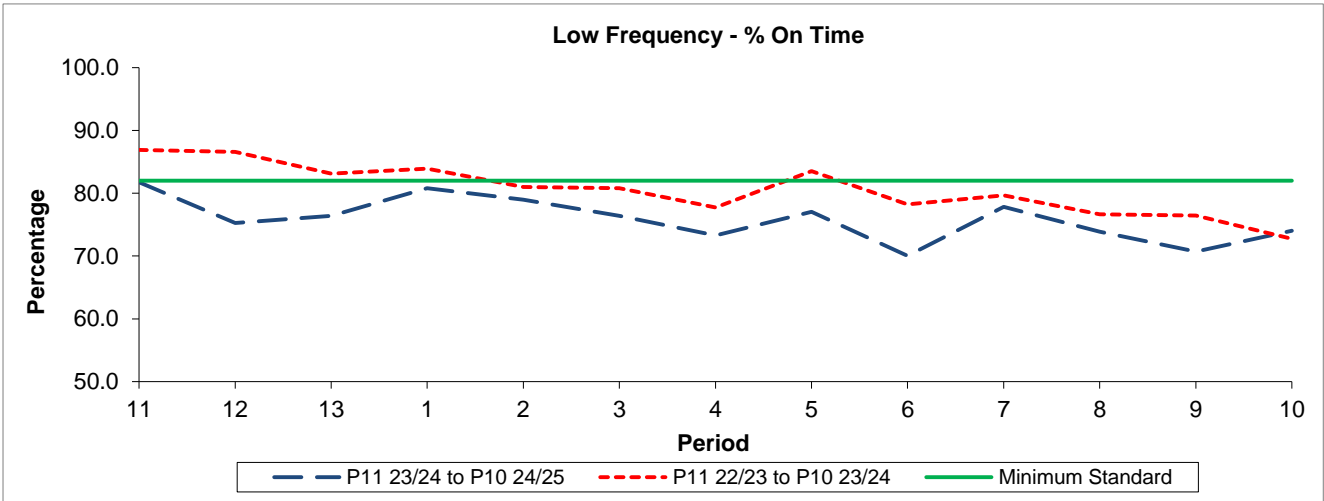


QSI & Mileage Performance Results

Route N87

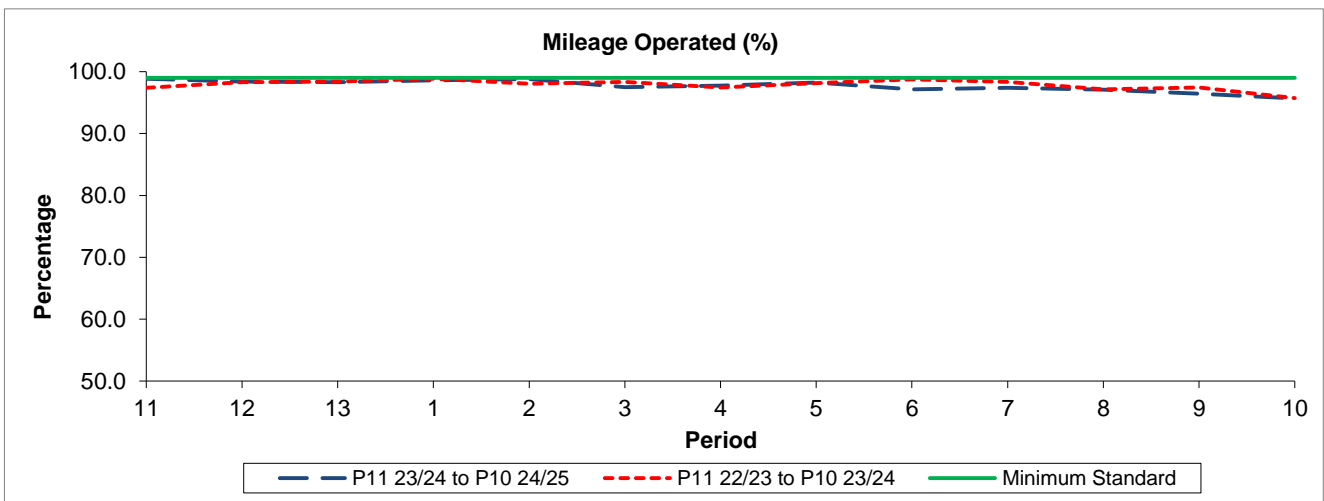
Reliability Performance



Period	11	12	13	1	2	3	4	5	6	7	8	9	10
P11 23/24 to P10 24/25	81.75	75.24	76.40	80.78	78.99	76.41	73.28	77.07	70.04	77.86	73.90	70.70	74.04
P11 22/23 to P10 23/24	86.90	86.61	83.10	83.91	81.00	80.82	77.73	83.50	78.21	79.64	76.63	76.42	72.74
Minimum Standard	82.00	82.00	82.00	82.00	82.00	82.00	82.00	82.00	82.00	82.00	82.00	82.00	82.00

% On Time performance figures are based on four weeks data

Mileage Performance



Period	11	12	13	1	2	3	4	5	6	7	8	9	10
P11 23/24 to P10 24/25	98.85	98.40	98.32	98.58	98.80	97.48	97.77	98.26	97.13	97.38	97.08	96.42	95.68
P11 22/23 to P10 23/24	97.41	98.29	98.38	98.86	98.04	98.35	97.43	98.16	98.75	98.36	97.16	97.46	95.73
Minimum Standard	99.00	99.00	99.00	99.00	99.00	99.00	99.00	99.00	99.00	99.00	99.00	99.00	99.00

Mileage Performance figures are based on four weeks data