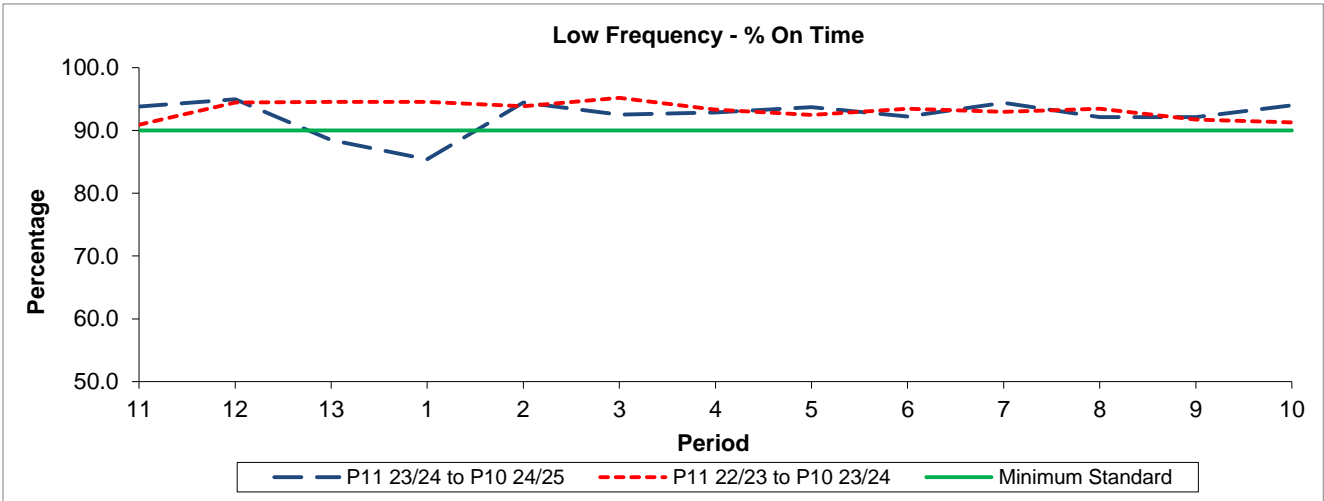


QSI & Mileage Performance Results

Route N86

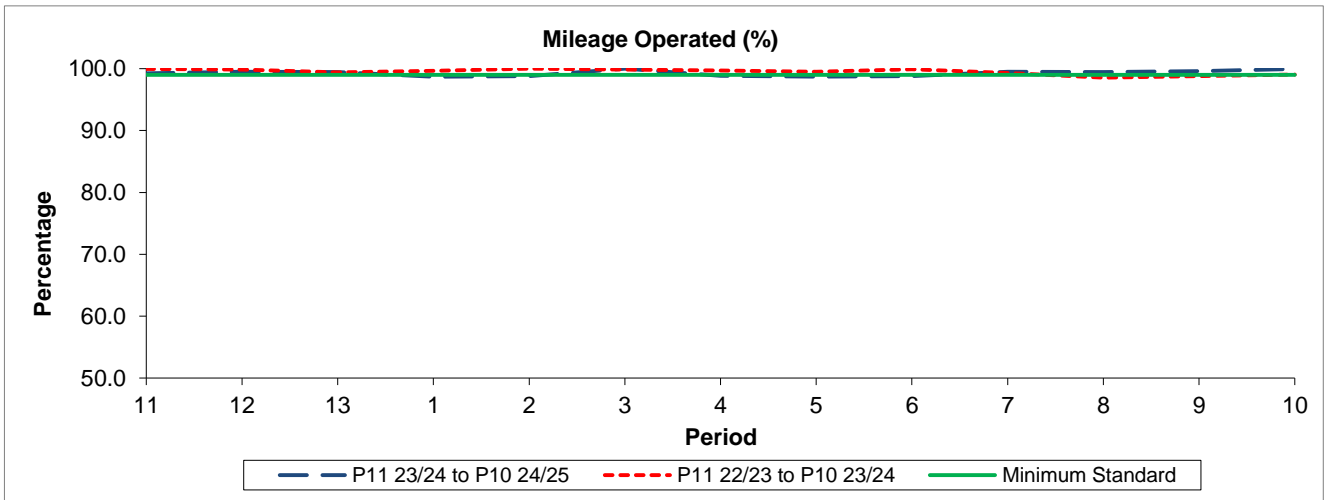
Reliability Performance



Period	11	12	13	1	2	3	4	5	6	7	8	9	10
P11 23/24 to P10 24/25	93.81	94.96	88.46	85.40	94.43	92.50	92.84	93.68	92.21	94.39	92.10	92.11	93.99
P11 22/23 to P10 23/24	90.91	94.42	94.56	94.55	93.87	95.19	93.29	92.46	93.48	92.97	93.46	91.74	91.26
Minimum Standard	90.00	90.00	90.00	90.00	90.00	90.00	90.00	90.00	90.00	90.00	90.00	90.00	90.00

% On Time performance figures are based on four weeks data

Mileage Performance



Period	11	12	13	1	2	3	4	5	6	7	8	9	10
P11 23/24 to P10 24/25	99.23	99.48	99.44	98.71	98.78	100.00	98.84	98.71	98.78	99.52	99.47	99.60	99.94
P11 22/23 to P10 23/24	99.94	99.87	99.38	99.65	100.00	99.83	99.71	99.52	99.92	99.31	98.55	98.79	99.03
Minimum Standard	99.00	99.00	99.00	99.00	99.00	99.00	99.00	99.00	99.00	99.00	99.00	99.00	99.00

Mileage Performance figures are based on four weeks data