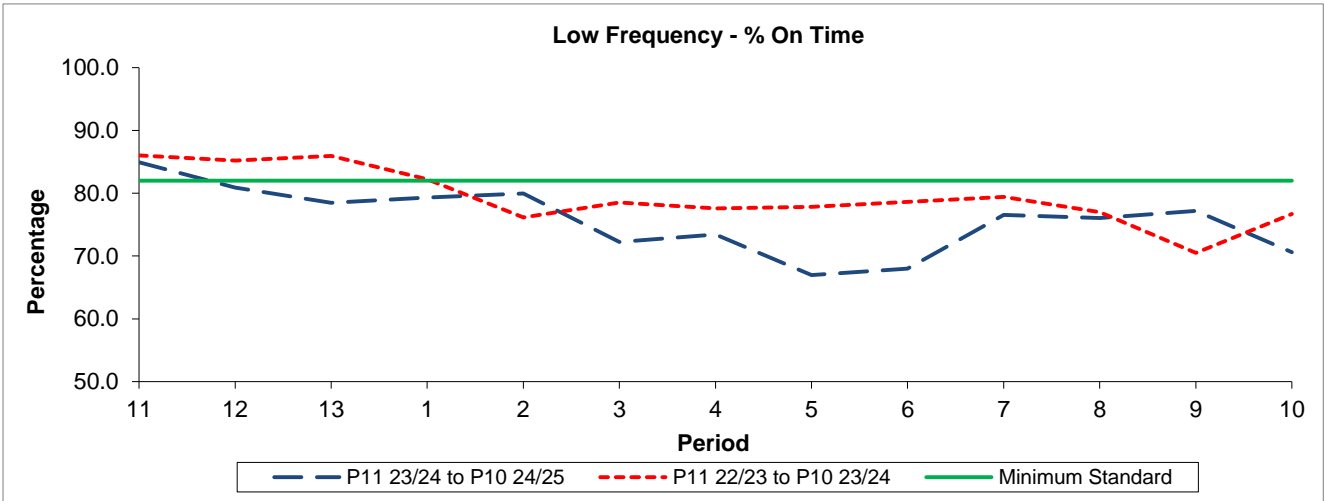


QSI & Mileage Performance Results

# Route N8

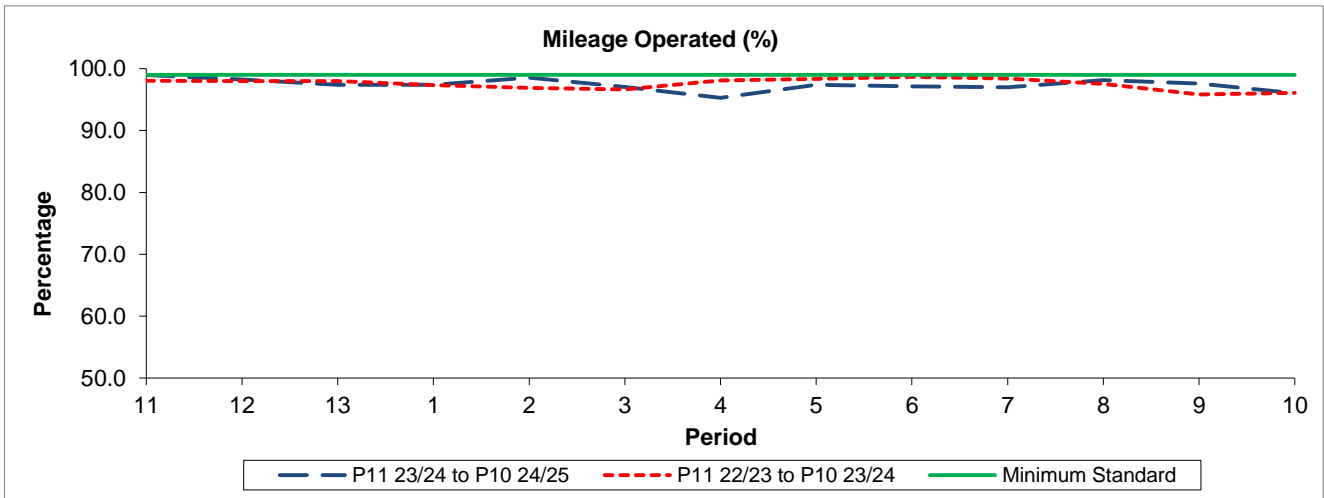
## Reliability Performance



Period	11	12	13	1	2	3	4	5	6	7	8	9	10
P11 23/24 to P10 24/25	84.93	80.90	78.45	79.33	79.94	72.22	73.41	66.97	67.98	76.55	76.04	77.21	70.62
P11 22/23 to P10 23/24	86.02	85.20	85.94	82.23	76.14	78.51	77.56	77.82	78.63	79.42	77.00	70.50	76.71
Minimum Standard	82.00	82.00	82.00	82.00	82.00	82.00	82.00	82.00	82.00	82.00	82.00	82.00	82.00

% On Time performance figures are based on four weeks data

## Mileage Performance



Period	11	12	13	1	2	3	4	5	6	7	8	9	10
P11 23/24 to P10 24/25	98.97	98.27	97.39	97.41	98.55	97.02	95.29	97.41	97.16	97.00	98.13	97.59	96.04
P11 22/23 to P10 23/24	98.07	97.98	97.98	97.35	96.89	96.64	98.11	98.36	98.68	98.37	97.56	95.83	96.11
Minimum Standard	99.00	99.00	99.00	99.00	99.00	99.00	99.00	99.00	99.00	99.00	99.00	99.00	99.00

Mileage Performance figures are based on four weeks data