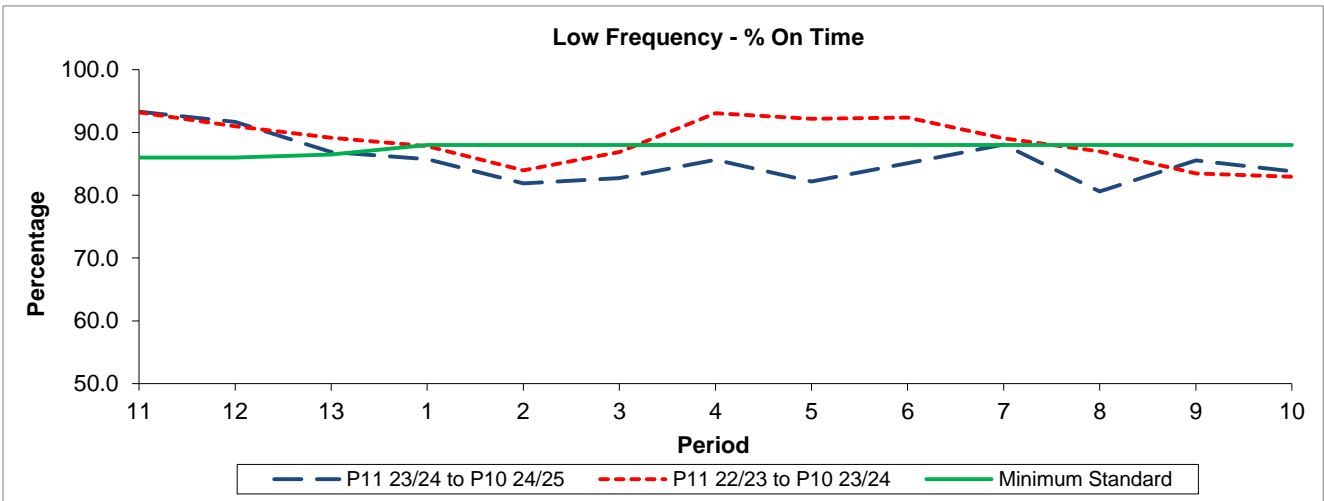


QSI & Mileage Performance Results

Route N76

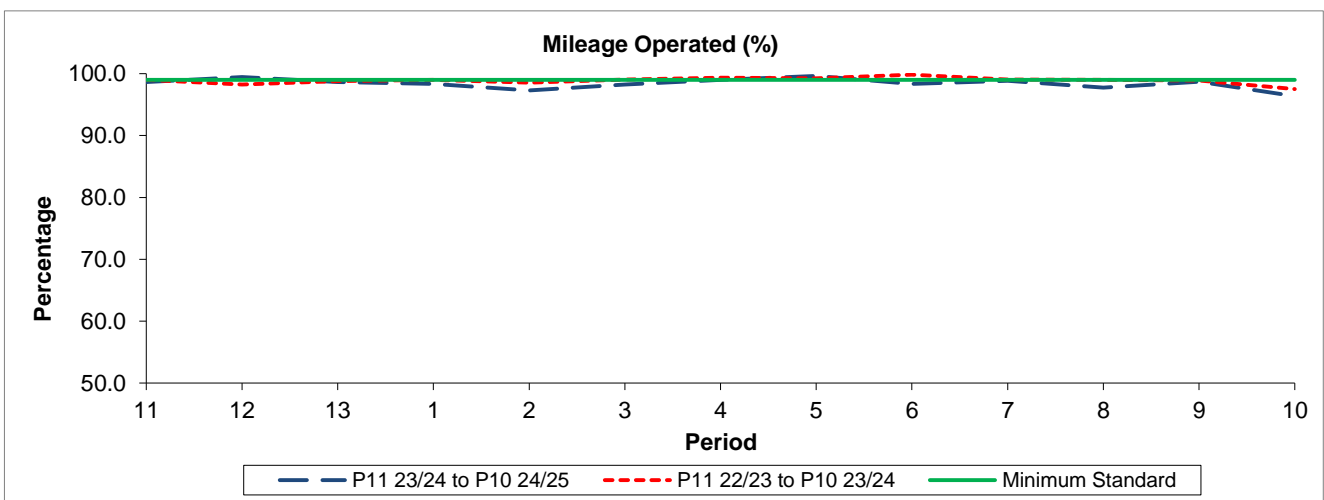
Reliability Performance



Period	11	12	13	1	2	3	4	5	6	7	8	9	10
P11 23/24 to P10 24/25	93.30	91.66	86.89	85.73	81.89	82.73	85.67	82.21	85.10	88.05	80.60	85.56	83.80
P11 22/23 to P10 23/24	93.19	91.00	89.15	87.84	83.99	86.89	93.04	92.17	92.35	89.05	87.00	83.48	82.94
Minimum Standard	86.00	86.00	86.48	88.00	88.00	88.00	88.00	88.00	88.00	88.00	88.00	88.00	88.00

% On Time performance figures are based on four weeks data

Mileage Performance



Period	11	12	13	1	2	3	4	5	6	7	8	9	10
P11 23/24 to P10 24/25	98.62	99.47	98.65	98.33	97.27	98.25	99.02	99.63	98.36	98.86	97.73	98.69	96.37
P11 22/23 to P10 23/24	99.02	98.27	98.79	99.02	98.56	99.07	99.33	99.23	99.84	99.06	98.97	98.88	97.51
Minimum Standard	99.00	99.00	99.00	99.00	99.00	99.00	99.00	99.00	99.00	99.00	99.00	99.00	99.00

Mileage Performance figures are based on four weeks data