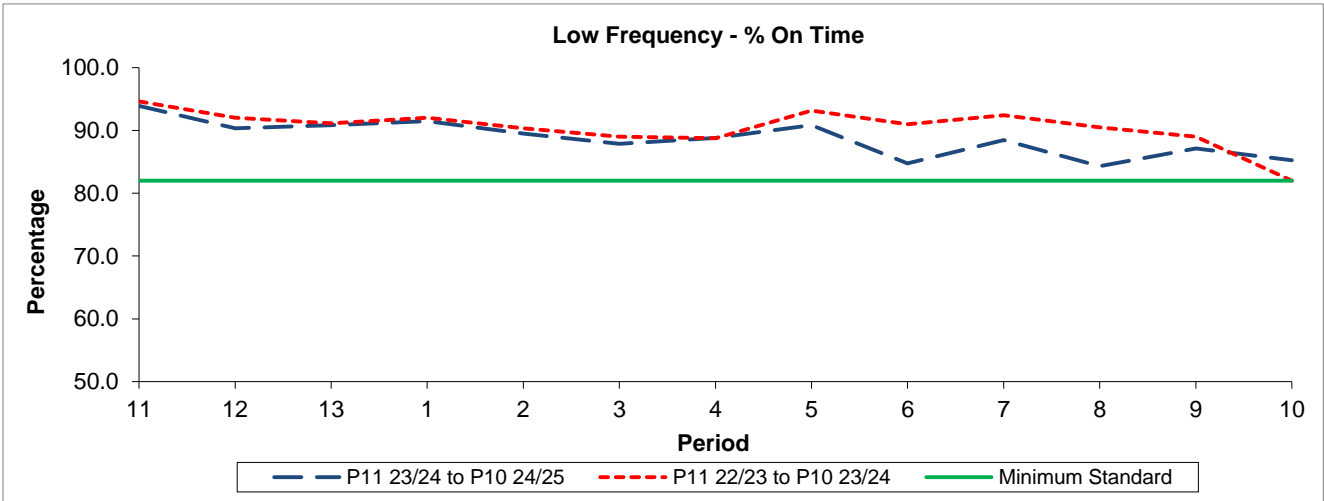


QSI & Mileage Performance Results

Route N73

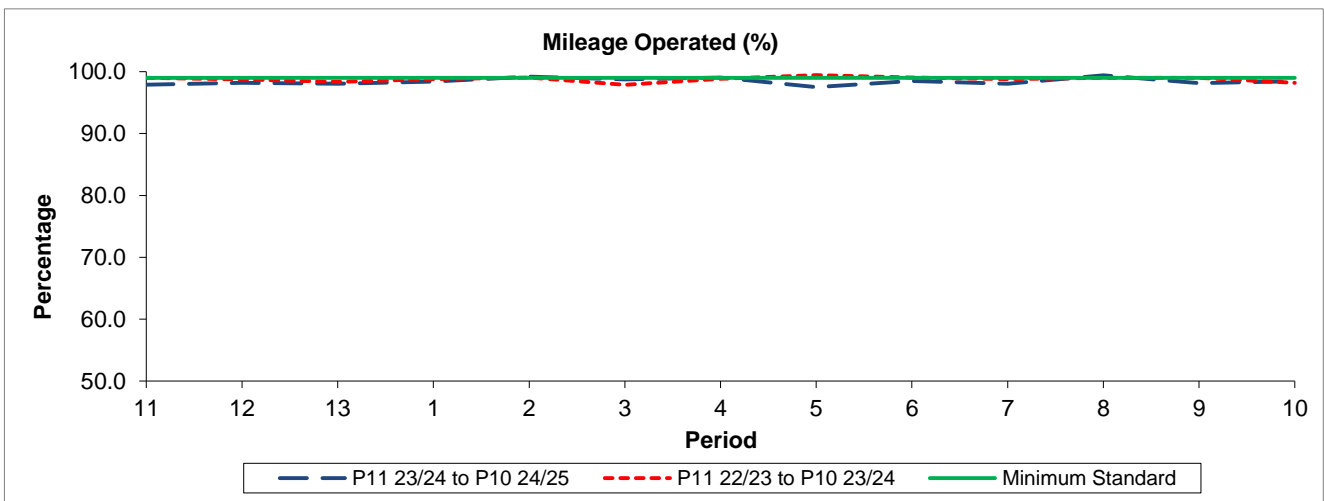
Reliability Performance



Period	11	12	13	1	2	3	4	5	6	7	8	9	10
P11 23/24 to P10 24/25	93.91	90.33	90.84	91.48	89.48	87.88	88.80	90.84	84.76	88.45	84.31	87.14	85.25
P11 22/23 to P10 23/24	94.62	92.05	91.14	92.02	90.34	88.99	88.75	93.16	91.01	92.40	90.48	89.00	82.00
Minimum Standard	82.00	82.00	82.00	82.00	82.00	82.00	82.00	82.00	82.00	82.00	82.00	82.00	82.00

% On Time performance figures are based on four weeks data

Mileage Performance



Period	11	12	13	1	2	3	4	5	6	7	8	9	10
P11 23/24 to P10 24/25	97.88	98.18	98.05	98.39	99.21	98.74	99.04	97.50	98.51	98.05	99.41	98.12	98.46
P11 22/23 to P10 23/24	99.02	98.77	98.37	98.81	99.02	97.88	98.83	99.44	99.04	98.81	98.99	99.00	98.20
Minimum Standard	99.00	99.00	99.00	99.00	99.00	99.00	99.00	99.00	99.00	99.00	99.00	99.00	99.00

Mileage Performance figures are based on four weeks data