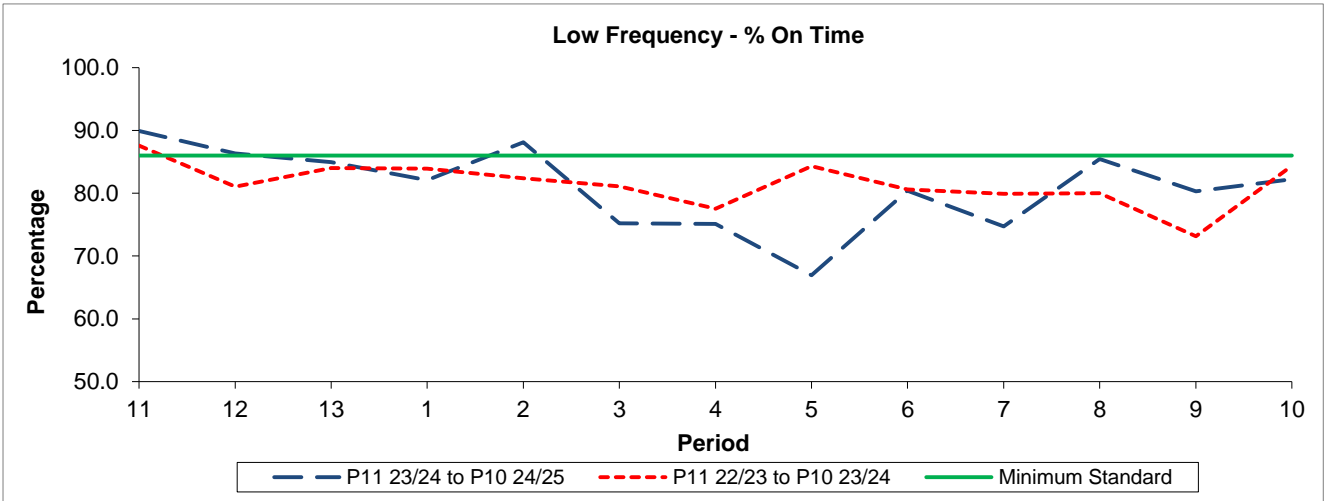


QSI & Mileage Performance Results

Route N63

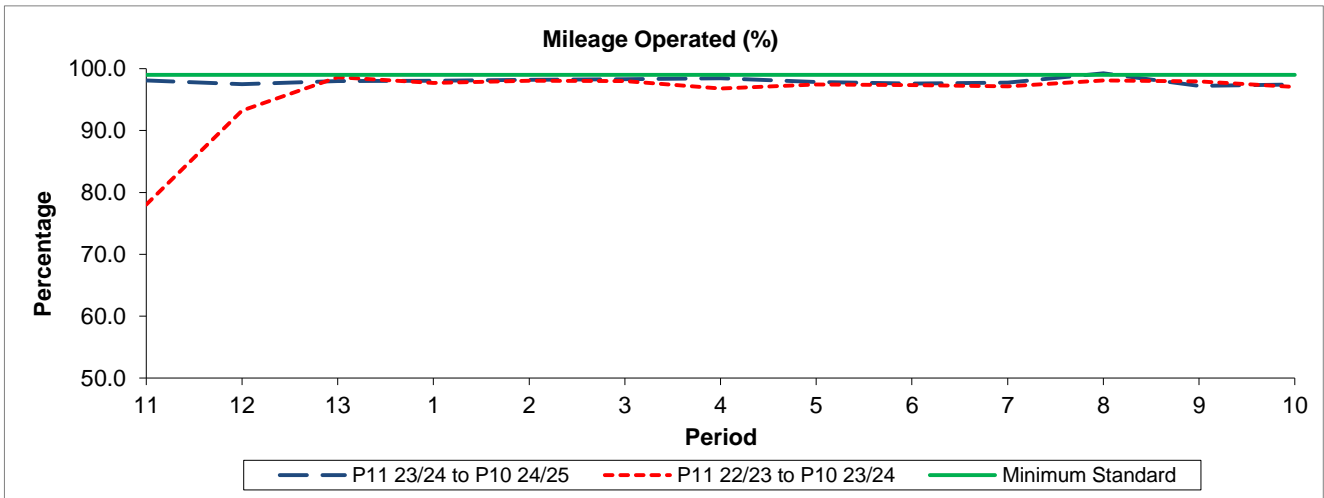
Reliability Performance



Period	11	12	13	1	2	3	4	5	6	7	8	9	10
P11 23/24 to P10 24/25	89.92	86.32	84.94	82.08	88.12	75.22	75.12	66.94	80.41	74.72	85.46	80.30	82.26
P11 22/23 to P10 23/24	87.58	81.03	83.99	83.90	82.38	81.08	77.53	84.32	80.59	79.92	80.03	73.15	84.37
Minimum Standard	86.00	86.00	86.00	86.00	86.00	86.00	86.00	86.00	86.00	86.00	86.00	86.00	86.00

% On Time performance figures are based on four weeks data

Mileage Performance



Period	11	12	13	1	2	3	4	5	6	7	8	9	10
P11 23/24 to P10 24/25	98.08	97.49	97.98	98.04	98.22	98.29	98.47	97.82	97.59	97.76	99.25	97.22	97.46
P11 22/23 to P10 23/24	78.04	93.24	98.62	97.68	98.03	98.01	96.79	97.43	97.36	97.13	98.08	97.92	97.02
Minimum Standard	99.00	99.00	99.00	99.00	99.00	99.00	99.00	99.00	99.00	99.00	99.00	99.00	99.00

Mileage Performance figures are based on four weeks data