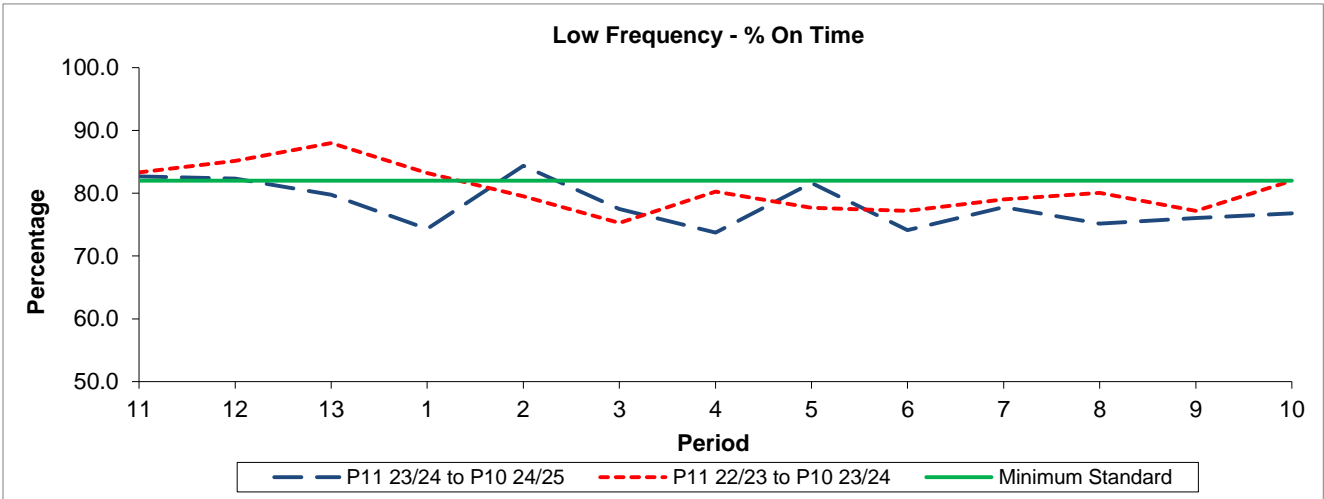


QSI & Mileage Performance Results

# Route N55

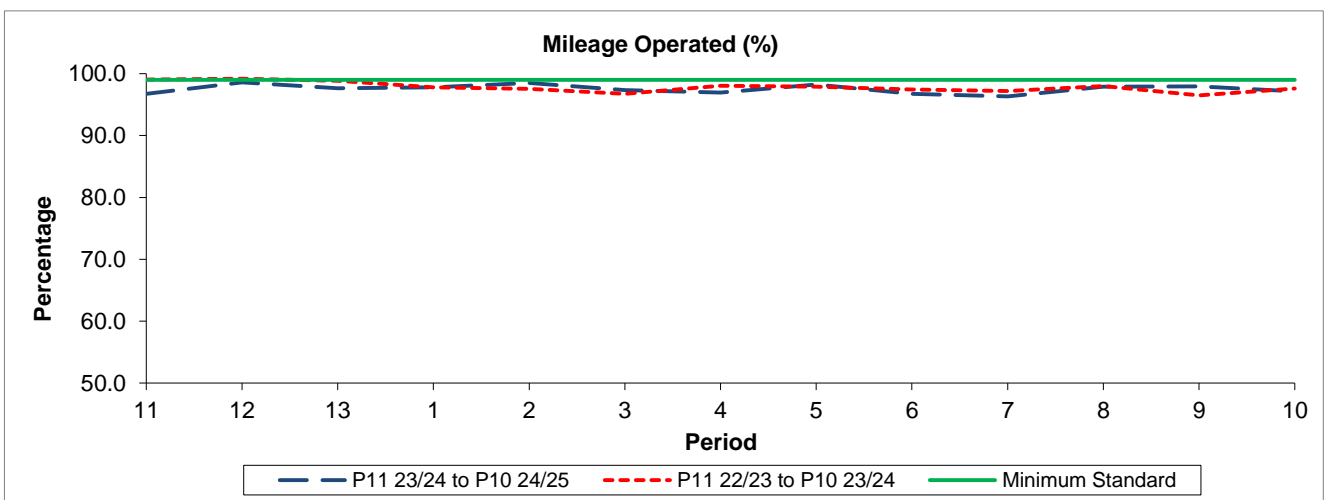
## Reliability Performance



Period	11	12	13	1	2	3	4	5	6	7	8	9	10
P11 23/24 to P10 24/25	82.67	82.35	79.75	74.34	84.37	77.50	73.73	81.63	74.11	77.76	75.19	76.03	76.78
P11 22/23 to P10 23/24	83.30	85.13	87.99	83.22	79.52	75.27	80.24	77.69	77.19	79.03	80.08	77.18	82.00
Minimum Standard	82.00	82.00	82.00	82.00	82.00	82.00	82.00	82.00	82.00	82.00	82.00	82.00	82.00

% On Time performance figures are based on four weeks data

## Mileage Performance



Period	11	12	13	1	2	3	4	5	6	7	8	9	10
P11 23/24 to P10 24/25	96.74	98.59	97.66	97.79	98.50	97.36	96.95	98.25	96.72	96.33	97.89	97.96	97.15
P11 22/23 to P10 23/24	99.03	99.18	98.82	97.79	97.57	96.76	98.05	97.90	97.47	97.17	98.00	96.49	97.62
Minimum Standard	99.00	99.00	99.00	99.00	99.00	99.00	99.00	99.00	99.00	99.00	99.00	99.00	99.00

Mileage Performance figures are based on four weeks data