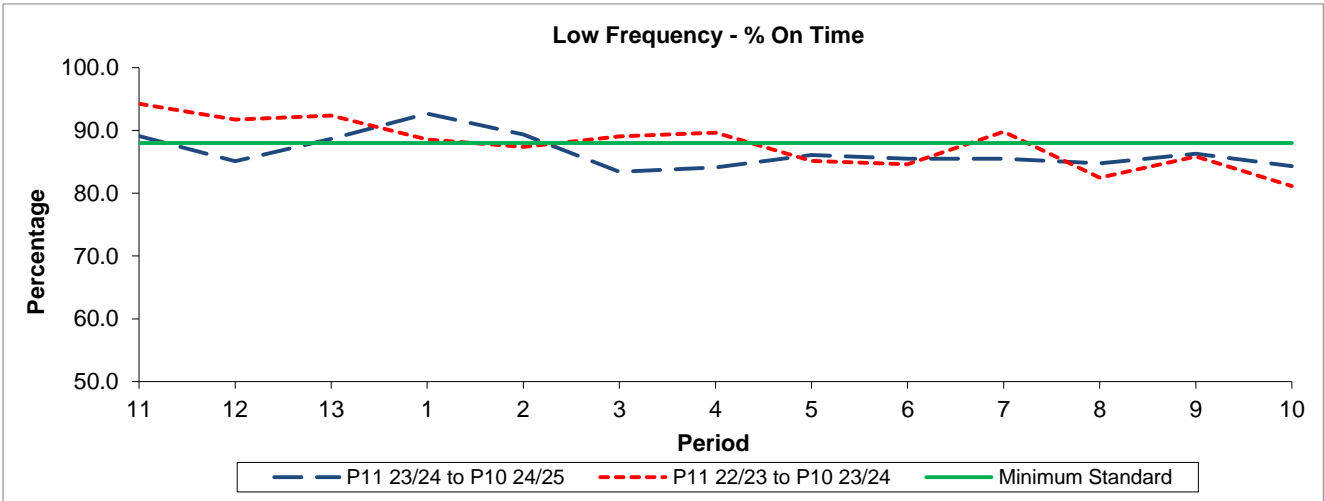


QSI & Mileage Performance Results

Route N53

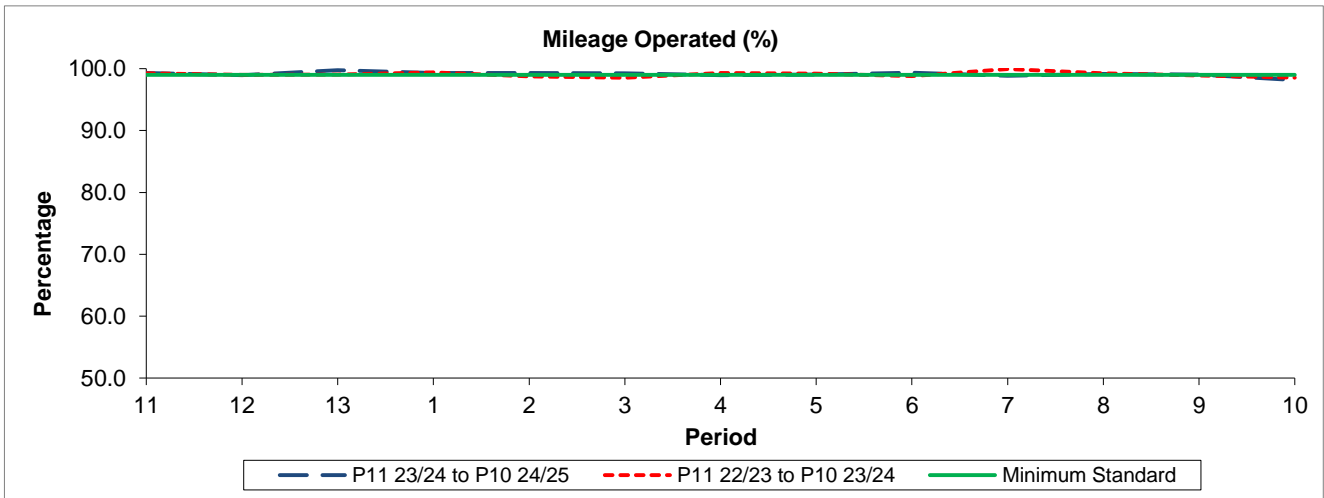
Reliability Performance



Period	11	12	13	1	2	3	4	5	6	7	8	9	10
P11 23/24 to P10 24/25	89.12	85.09	88.65	92.68	89.36	83.41	84.11	86.11	85.49	85.48	84.74	86.30	84.29
P11 22/23 to P10 23/24	94.25	91.71	92.37	88.58	87.35	89.05	89.66	85.16	84.58	89.82	82.50	85.86	81.14
Minimum Standard	88.00	88.00	88.00	88.00	88.00	88.00	88.00	88.00	88.00	88.00	88.00	88.00	88.00

% On Time performance figures are based on four weeks data

Mileage Performance



Period	11	12	13	1	2	3	4	5	6	7	8	9	10
P11 23/24 to P10 24/25	99.32	98.96	99.75	99.31	99.28	99.23	98.94	99.05	99.35	98.85	99.14	99.04	98.16
P11 22/23 to P10 23/24	99.23	99.02	99.04	99.42	98.73	98.53	99.31	99.21	98.80	99.94	99.27	98.89	98.53
Minimum Standard	99.00	99.00	99.00	99.00	99.00	99.00	99.00	99.00	99.00	99.00	99.00	99.00	99.00

Mileage Performance figures are based on four weeks data