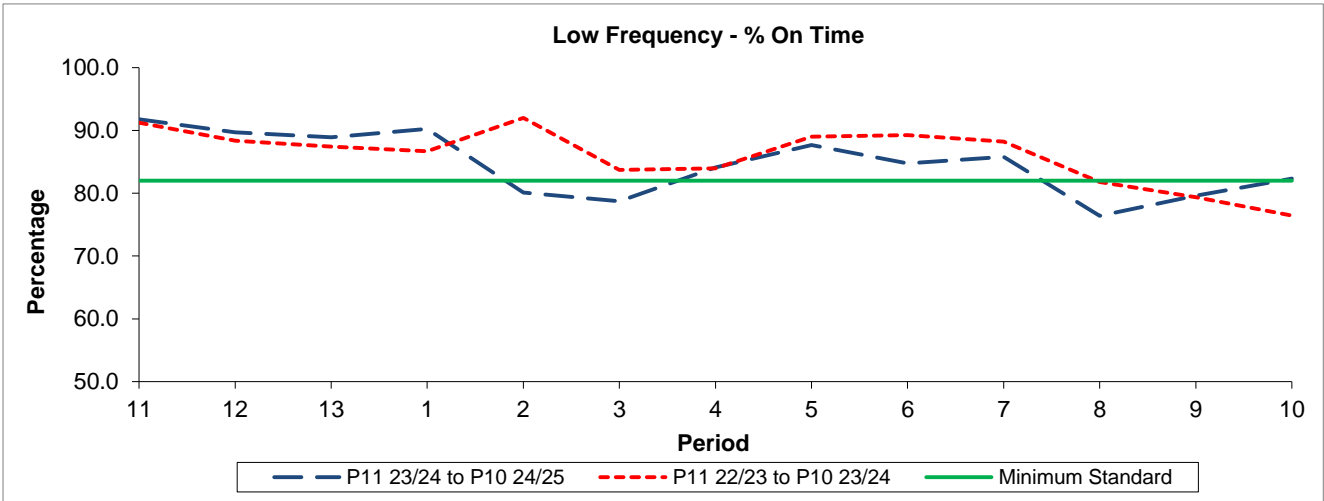


QSI & Mileage Performance Results

# Route N453

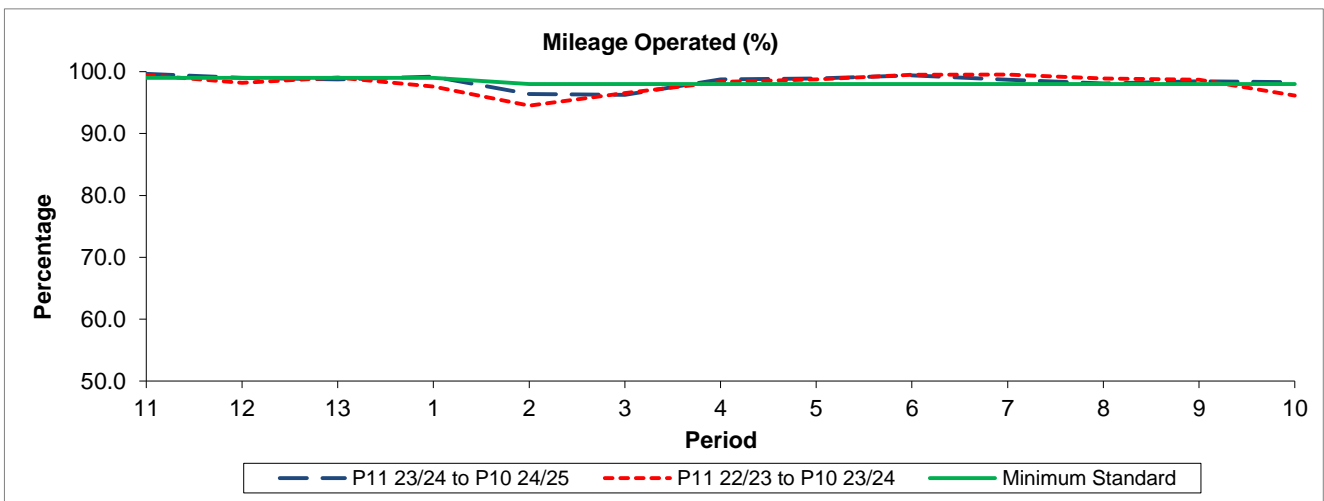
## Reliability Performance



Period	11	12	13	1	2	3	4	5	6	7	8	9	10
P11 23/24 to P10 24/25	91.77	89.69	88.89	90.23	80.10	78.70	84.13	87.65	84.77	85.78	76.40	79.60	82.35
P11 22/23 to P10 23/24	91.25	88.35	87.45	86.70	92.00	83.71	83.98	89.00	89.25	88.22	81.80	79.36	76.44
Minimum Standard	82.00	82.00	82.00	82.00	82.00	82.00	82.00	82.00	82.00	82.00	82.00	82.00	82.00

% On Time performance figures are based on four weeks data

## Mileage Performance



Period	11	12	13	1	2	3	4	5	6	7	8	9	10
P11 23/24 to P10 24/25	99.65	99.01	98.73	99.18	96.37	96.25	98.72	98.91	99.40	98.69	98.08	98.44	98.27
P11 22/23 to P10 23/24	99.43	98.22	99.06	97.59	94.51	96.55	98.35	98.75	99.52	99.53	98.91	98.70	96.15
Minimum Standard	99.00	99.00	99.00	99.00	98.00	98.00	98.00	98.00	98.00	98.00	98.00	98.00	98.00

Mileage Performance figures are based on four weeks data