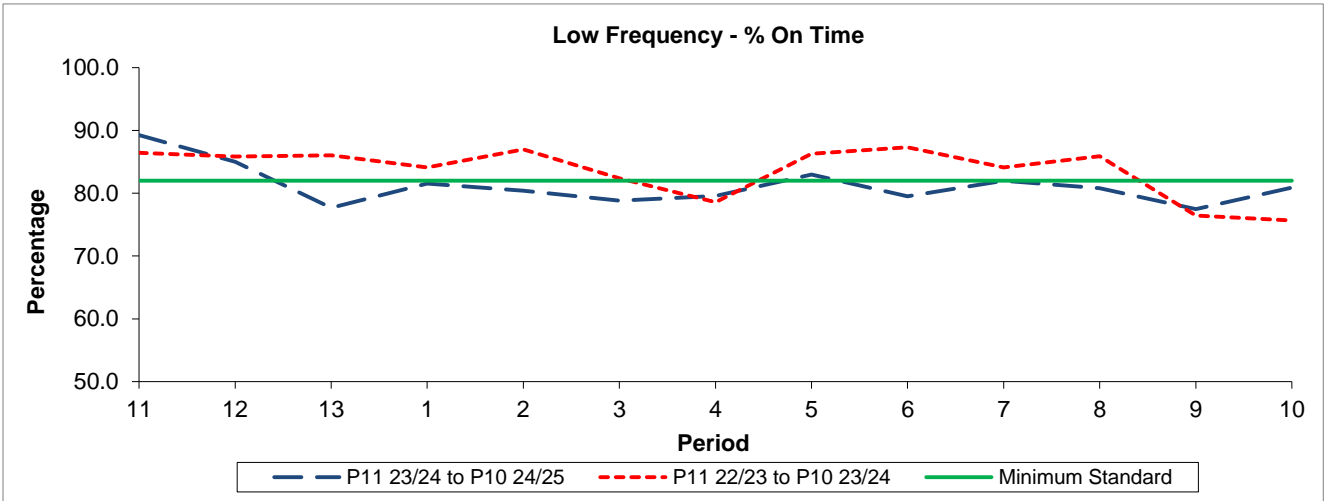


QSI & Mileage Performance Results

Route N44

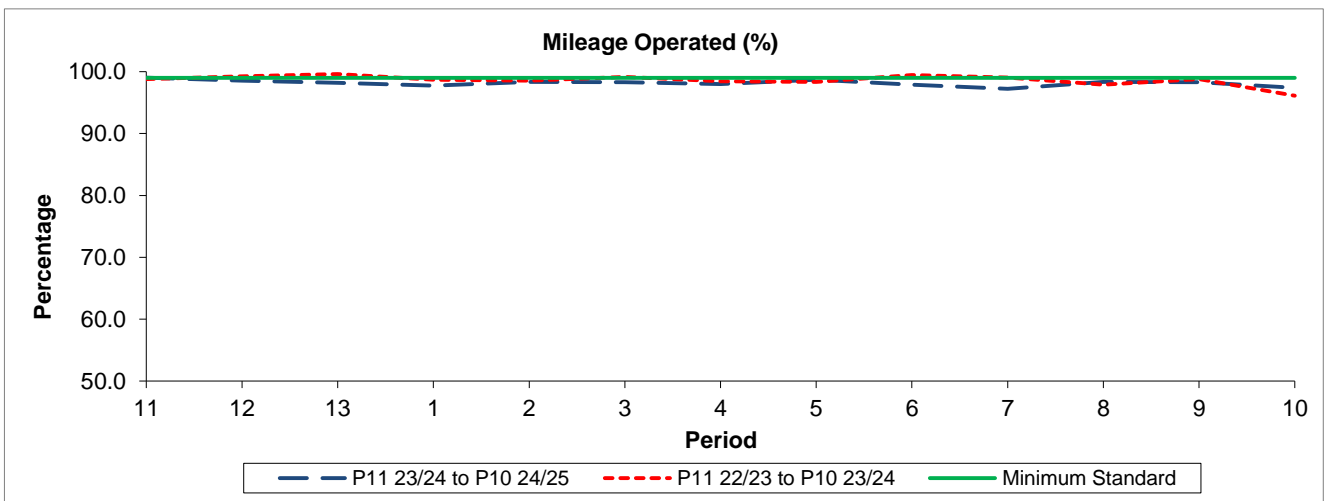
Reliability Performance



Period	11	12	13	1	2	3	4	5	6	7	8	9	10
P11 23/24 to P10 24/25	89.26	85.02	77.70	81.55	80.40	78.80	79.54	82.98	79.51	81.99	80.81	77.47	80.88
P11 22/23 to P10 23/24	86.46	85.85	86.06	84.10	86.98	82.38	78.56	86.27	87.32	84.13	85.88	76.43	75.66
Minimum Standard	82.00	82.00	82.00	82.00	82.00	82.00	82.00	82.00	82.00	82.00	82.00	82.00	82.00

% On Time performance figures are based on four weeks data

Mileage Performance



Period	11	12	13	1	2	3	4	5	6	7	8	9	10
P11 23/24 to P10 24/25	99.03	98.54	98.21	97.73	98.34	98.28	97.98	98.69	97.89	97.23	98.35	98.29	97.40
P11 22/23 to P10 23/24	98.78	99.26	99.61	98.68	98.54	99.15	98.42	98.32	99.47	99.05	97.89	98.79	96.11
Minimum Standard	99.00	99.00	99.00	99.00	99.00	99.00	99.00	99.00	99.00	99.00	99.00	99.00	99.00

Mileage Performance figures are based on four weeks data