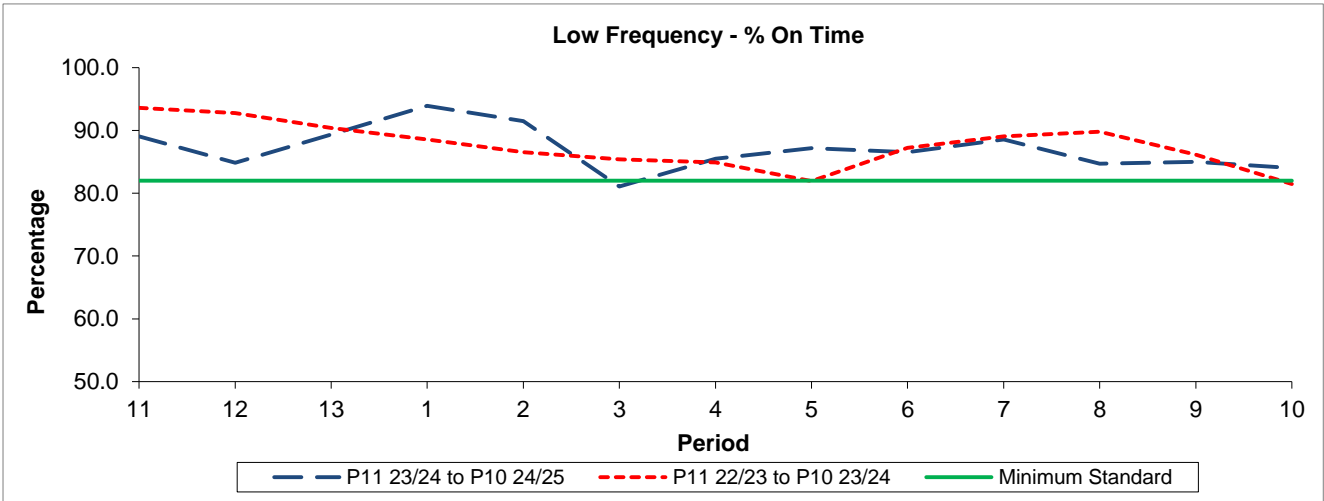


QSI & Mileage Performance Results

Route N41

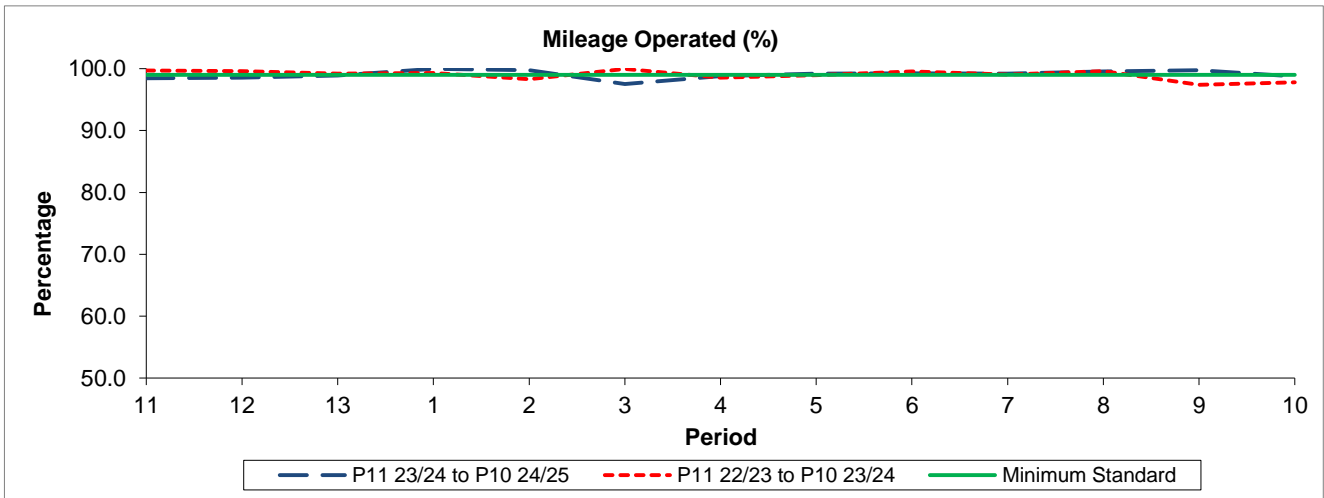
Reliability Performance



Period	11	12	13	1	2	3	4	5	6	7	8	9	10
P11 23/24 to P10 24/25	89.04	84.85	89.36	93.92	91.49	81.07	85.52	87.18	86.56	88.57	84.72	85.02	84.00
P11 22/23 to P10 23/24	93.60	92.79	90.40	88.55	86.52	85.37	84.89	81.94	87.23	89.07	89.79	86.15	81.47
Minimum Standard	82.00	82.00	82.00	82.00	82.00	82.00	82.00	82.00	82.00	82.00	82.00	82.00	82.00

% On Time performance figures are based on four weeks data

Mileage Performance



Period	11	12	13	1	2	3	4	5	6	7	8	9	10
P11 23/24 to P10 24/25	98.43	98.53	98.91	99.97	99.77	97.52	98.80	99.18	99.25	99.18	99.54	99.73	98.75
P11 22/23 to P10 23/24	99.68	99.61	99.20	99.28	98.27	99.95	98.56	98.97	99.57	99.06	99.61	97.39	97.80
Minimum Standard	99.00	99.00	99.00	99.00	99.00	99.00	99.00	99.00	99.00	99.00	99.00	99.00	99.00

Mileage Performance figures are based on four weeks data