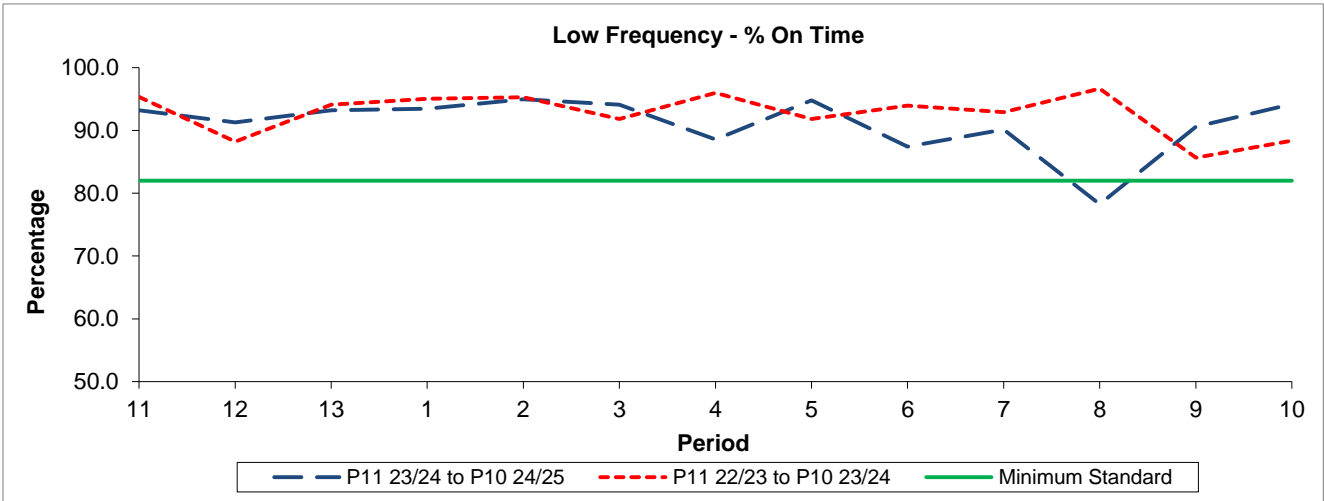


QSI & Mileage Performance Results

Route N390

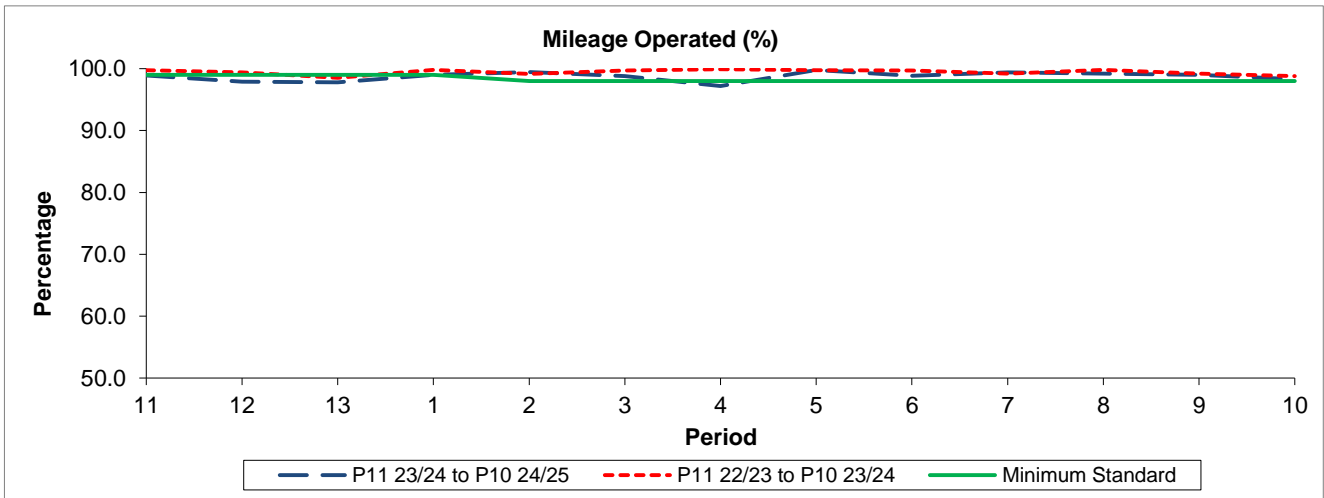
Reliability Performance



Period	11	12	13	1	2	3	4	5	6	7	8	9	10
P11 23/24 to P10 24/25	93.21	91.29	93.19	93.47	94.96	94.11	88.58	94.77	87.43	90.12	78.26	90.61	94.21
P11 22/23 to P10 23/24	95.34	88.24	94.12	95.05	95.30	91.82	95.97	91.81	93.93	92.94	96.65	85.66	88.39
Minimum Standard	82.00	82.00	82.00	82.00	82.00	82.00	82.00	82.00	82.00	82.00	82.00	82.00	82.00

% On Time performance figures are based on four weeks data

Mileage Performance



Period	11	12	13	1	2	3	4	5	6	7	8	9	10
P11 23/24 to P10 24/25	98.88	97.91	97.79	99.02	99.43	98.80	97.19	99.78	98.86	99.41	99.22	98.99	98.31
P11 22/23 to P10 23/24	99.75	99.42	98.52	99.82	99.14	99.70	99.91	99.73	99.72	99.20	99.79	99.20	98.81
Minimum Standard	99.00	99.00	99.00	99.00	98.00	98.00	98.00	98.00	98.00	98.00	98.00	98.00	98.00

Mileage Performance figures are based on four weeks data