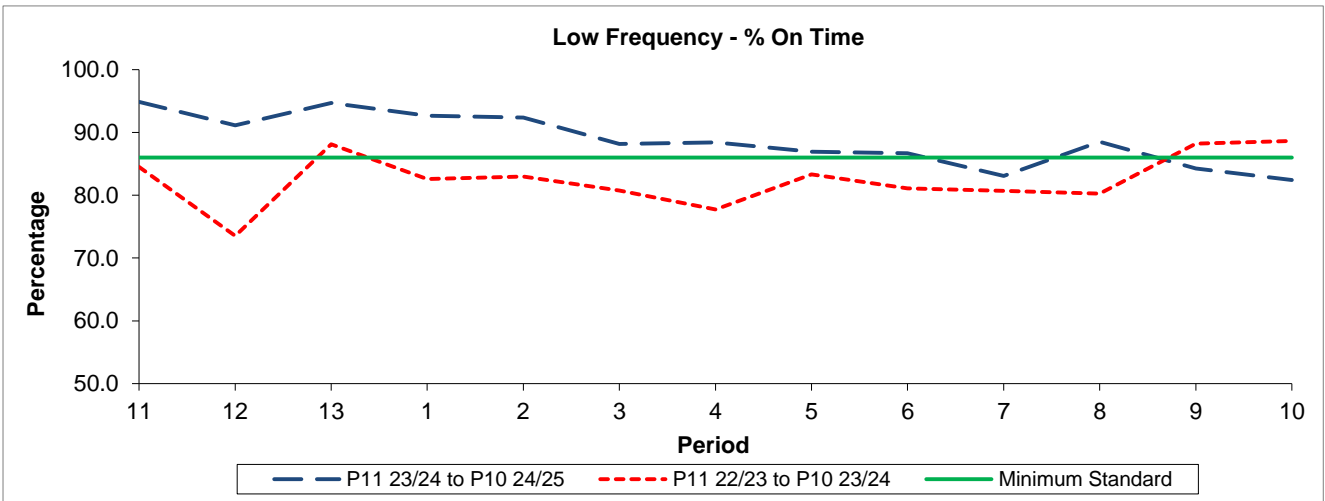


QSI & Mileage Performance Results

Route N381

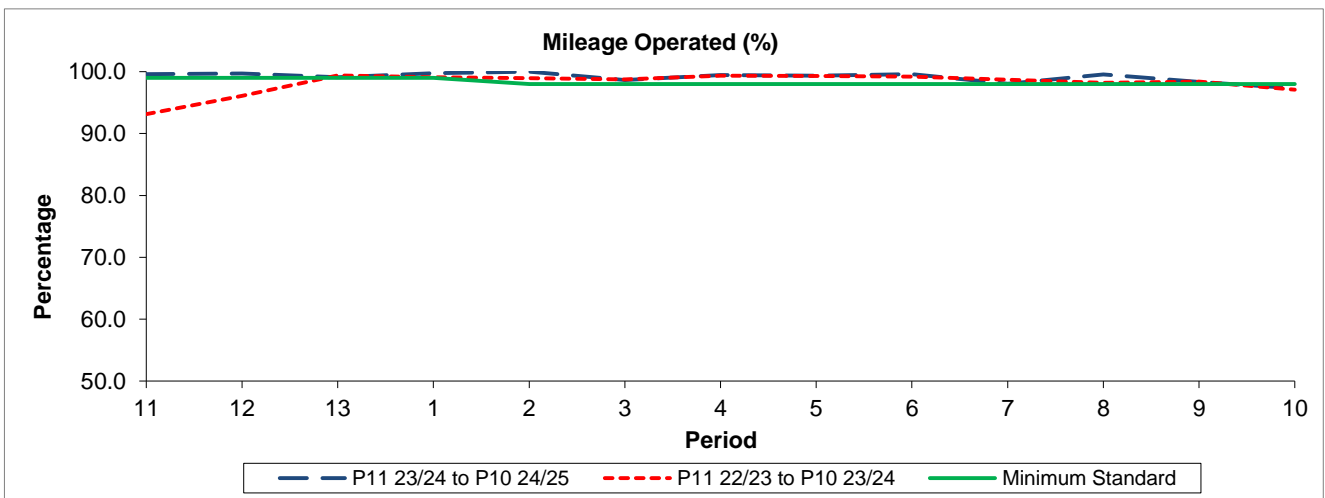
Reliability Performance



Period	11	12	13	1	2	3	4	5	6	7	8	9	10
P11 23/24 to P10 24/25	94.87	91.14	94.67	92.65	92.39	88.17	88.40	86.92	86.66	83.08	88.52	84.26	82.43
P11 22/23 to P10 23/24	84.50	73.53	88.11	82.60	82.99	80.75	77.75	83.31	81.12	80.70	80.27	88.23	88.64
Minimum Standard	86.00	86.00	86.00	86.00	86.00	86.00	86.00	86.00	86.00	86.00	86.00	86.00	86.00

% On Time performance figures are based on four weeks data

Mileage Performance



Period	11	12	13	1	2	3	4	5	6	7	8	9	10
P11 23/24 to P10 24/25	99.58	99.71	99.12	99.74	100.00	98.65	99.45	99.34	99.61	98.03	99.55	98.34	97.32
P11 22/23 to P10 23/24	93.14	96.08	99.39	99.09	98.97	98.76	99.35	99.28	99.19	98.68	98.19	98.41	97.11
Minimum Standard	99.00	99.00	99.00	99.00	98.00	98.00	98.00	98.00	98.00	98.00	98.00	98.00	98.00

Mileage Performance figures are based on four weeks data