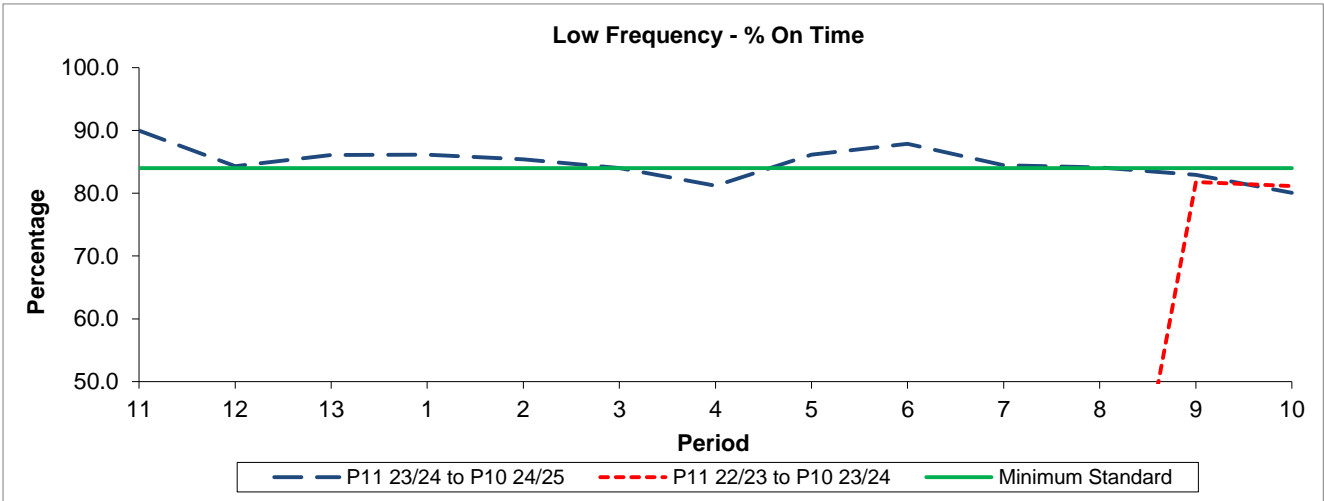


QSI & Mileage Performance Results

# Route N38

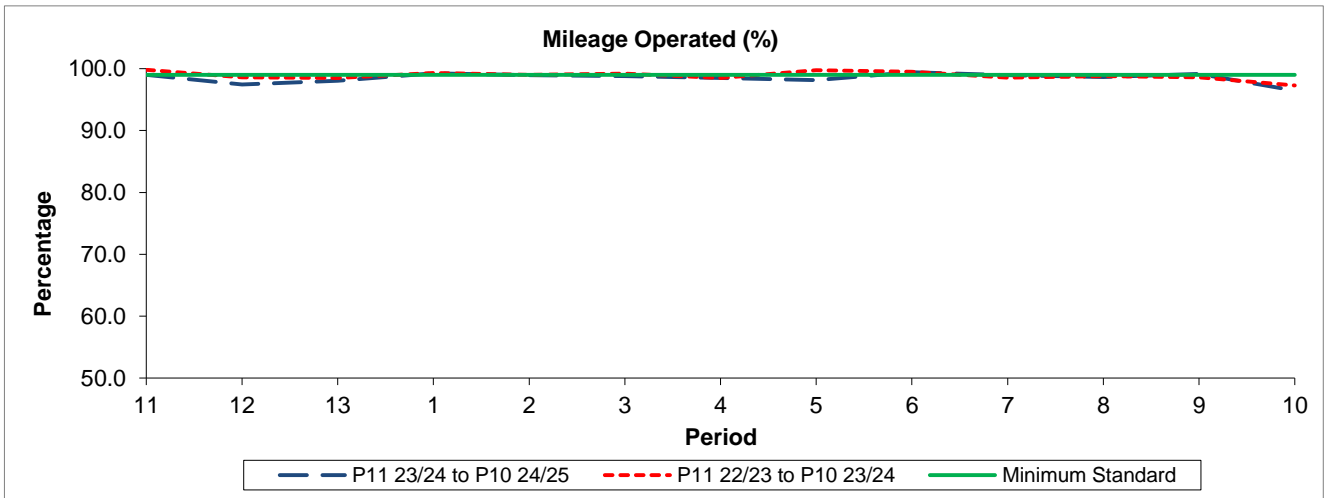
## Reliability Performance



Period	11	12	13	1	2	3	4	5	6	7	8	9	10
P11 23/24 to P10 24/25	89.97	84.32	86.08	86.14	85.39	84.00	81.19	86.15	87.86	84.48	84.10	82.91	80.06
P11 22/23 to P10 23/24												81.79	81.17
Minimum Standard	84.00	84.00	84.00	84.00	84.00	84.00	84.00	84.00	84.00	84.00	84.00	84.00	84.00

% On Time performance figures are based on four weeks data

## Mileage Performance



Period	11	12	13	1	2	3	4	5	6	7	8	9	10
P11 23/24 to P10 24/25	99.02	97.45	98.05	99.27	98.93	98.78	98.48	98.15	99.43	98.93	98.67	99.17	96.45
P11 22/23 to P10 23/24	99.82	98.58	98.51	99.29	98.98	99.20	98.47	99.75	99.50	98.54	98.80	98.59	97.29
Minimum Standard	99.00	99.00	99.00	99.00	99.00	99.00	99.00	99.00	99.00	99.00	99.00	99.00	99.00

Mileage Performance figures are based on four weeks data