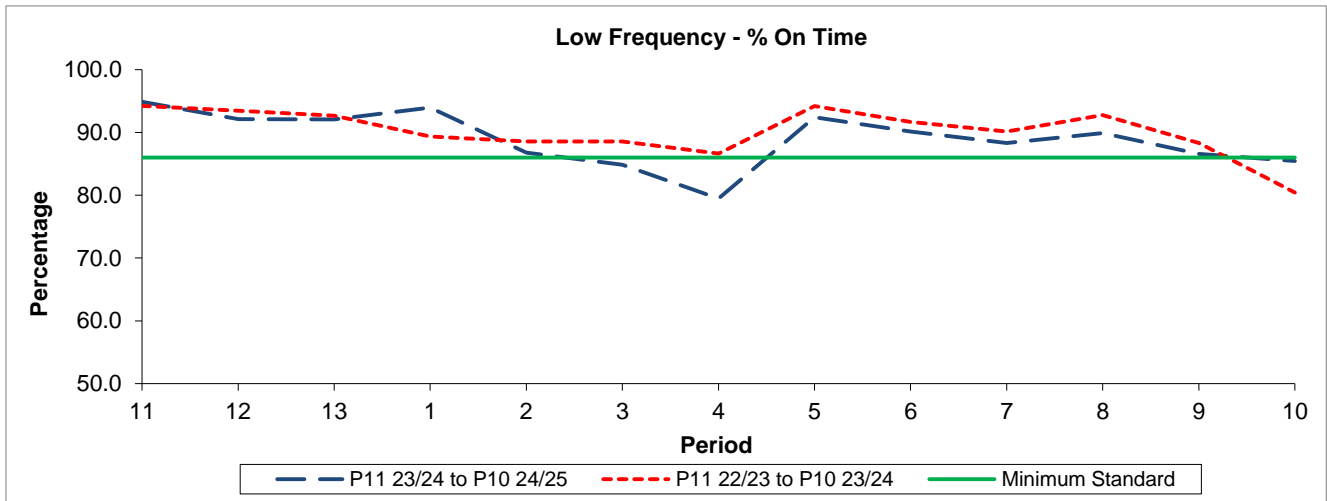


QSI & Mileage Performance Results

# Route N36

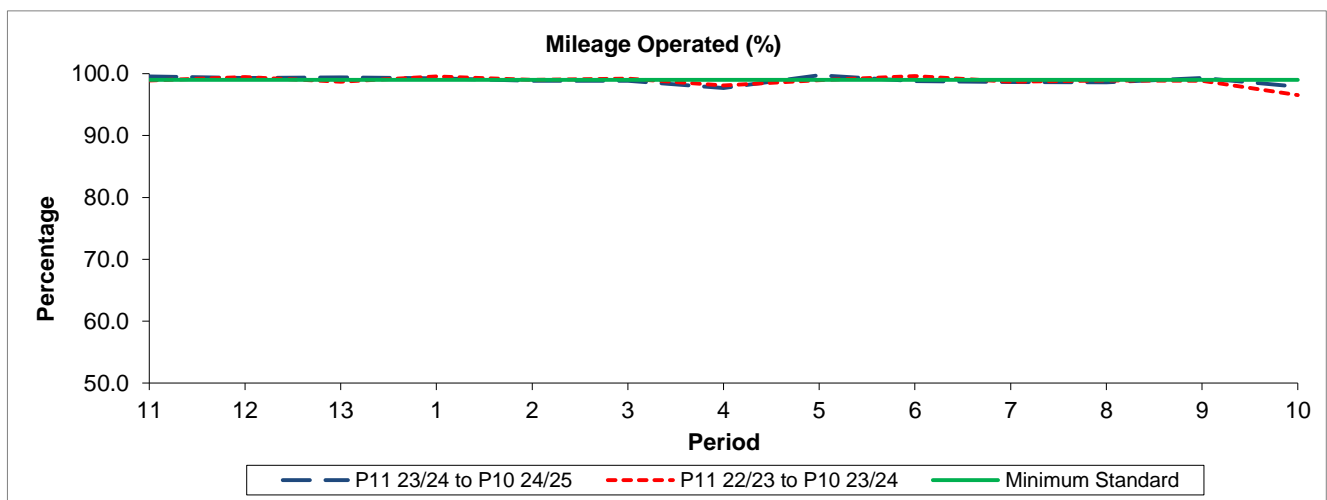
## Reliability Performance



Period	11	12	13	1	2	3	4	5	6	7	8	9	10
P11 23/24 to P10 24/25	94.88	92.12	92.09	93.94	86.78	84.85	79.48	92.43	90.12	88.31	89.89	86.57	85.43
P11 22/23 to P10 23/24	94.23	93.44	92.67	89.37	88.57	88.54	86.62	94.21	91.70	90.17	92.77	88.34	80.43
Minimum Standard	86.00	86.00	86.00	86.00	86.00	86.00	86.00	86.00	86.00	86.00	86.00	86.00	86.00

% On Time performance figures are based on four weeks data

## Mileage Performance



Period	11	12	13	1	2	3	4	5	6	7	8	9	10
P11 23/24 to P10 24/25	99.55	99.30	99.39	99.26	98.84	98.83	97.68	99.74	98.78	98.66	98.58	99.32	97.91
P11 22/23 to P10 23/24	98.92	99.45	98.68	99.56	99.01	99.21	98.09	98.93	99.61	98.68	98.91	98.87	96.54
Minimum Standard	99.00	99.00	99.00	99.00	99.00	99.00	99.00	99.00	99.00	99.00	99.00	99.00	99.00

Mileage Performance figures are based on four weeks data