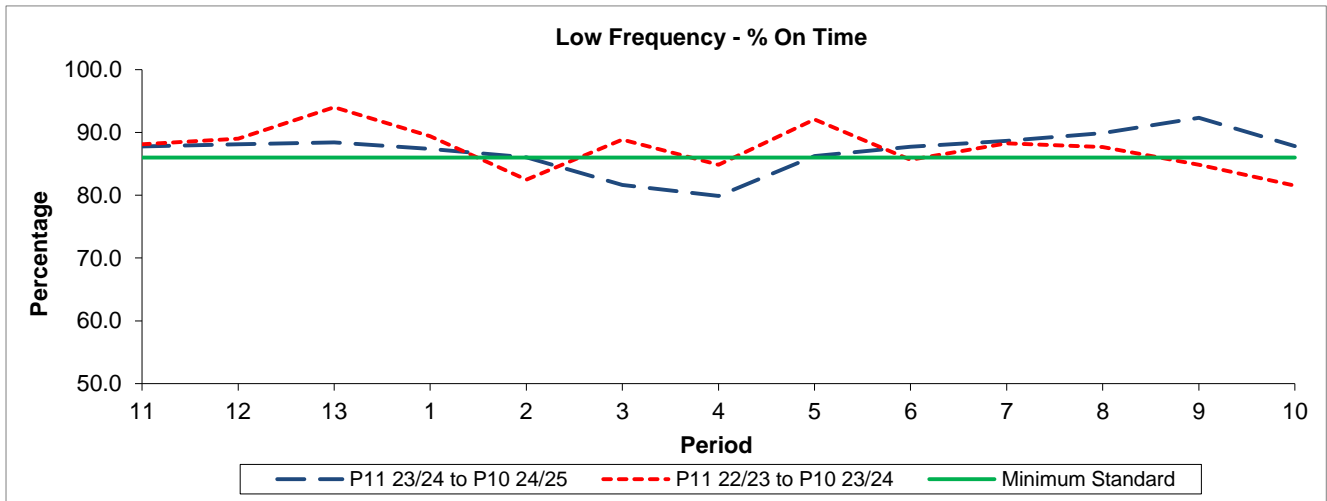


QSI & Mileage Performance Results

# Route N345

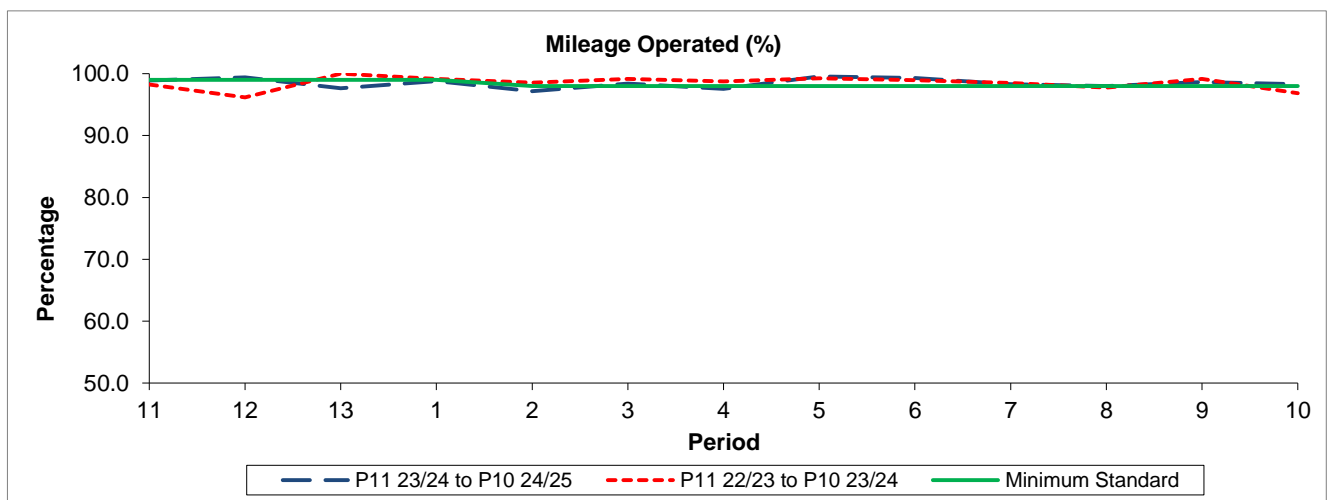
## Reliability Performance



Period	11	12	13	1	2	3	4	5	6	7	8	9	10
P11 23/24 to P10 24/25	87.77	88.11	88.42	87.39	86.03	81.63	79.89	86.23	87.71	88.64	89.90	92.33	87.82
P11 22/23 to P10 23/24	88.13	88.99	94.01	89.39	82.47	88.86	84.87	92.09	85.62	88.26	87.68	84.87	81.53
Minimum Standard	86.00	86.00	86.00	86.00	86.00	86.00	86.00	86.00	86.00	86.00	86.00	86.00	86.00

% On Time performance figures are based on four weeks data

## Mileage Performance



Period	11	12	13	1	2	3	4	5	6	7	8	9	10
P11 23/24 to P10 24/25	98.89	99.42	97.65	98.81	97.17	98.39	97.52	99.55	99.30	98.30	98.02	98.63	98.31
P11 22/23 to P10 23/24	98.22	96.17	100.00	99.14	98.55	99.16	98.75	99.26	98.95	98.47	97.76	99.17	96.86
Minimum Standard	99.00	99.00	99.00	99.00	98.00	98.00	98.00	98.00	98.00	98.00	98.00	98.00	98.00

Mileage Performance figures are based on four weeks data