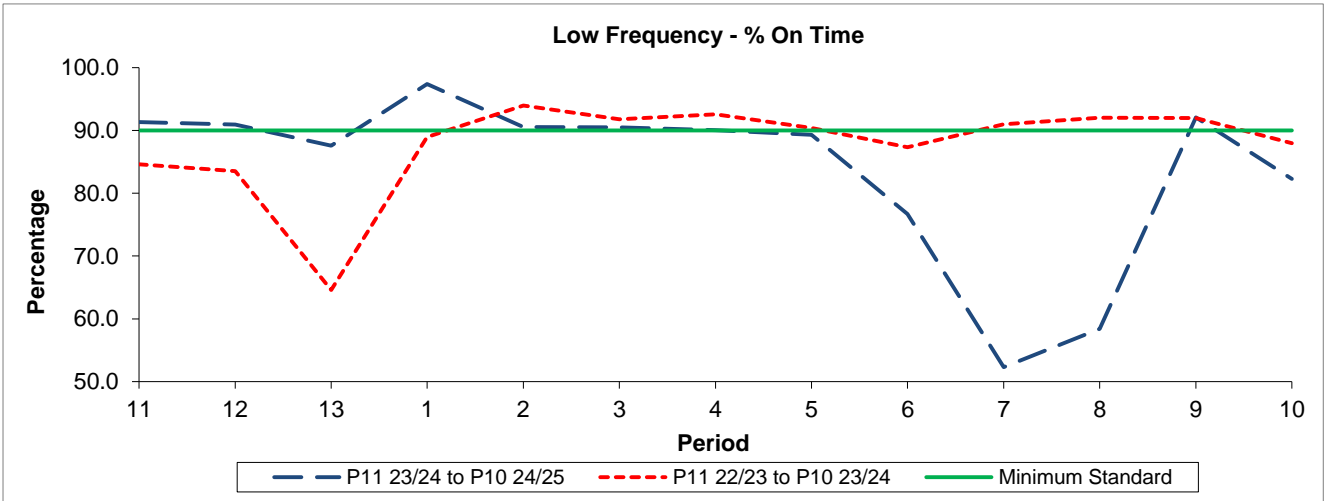


QSI & Mileage Performance Results

Route N33

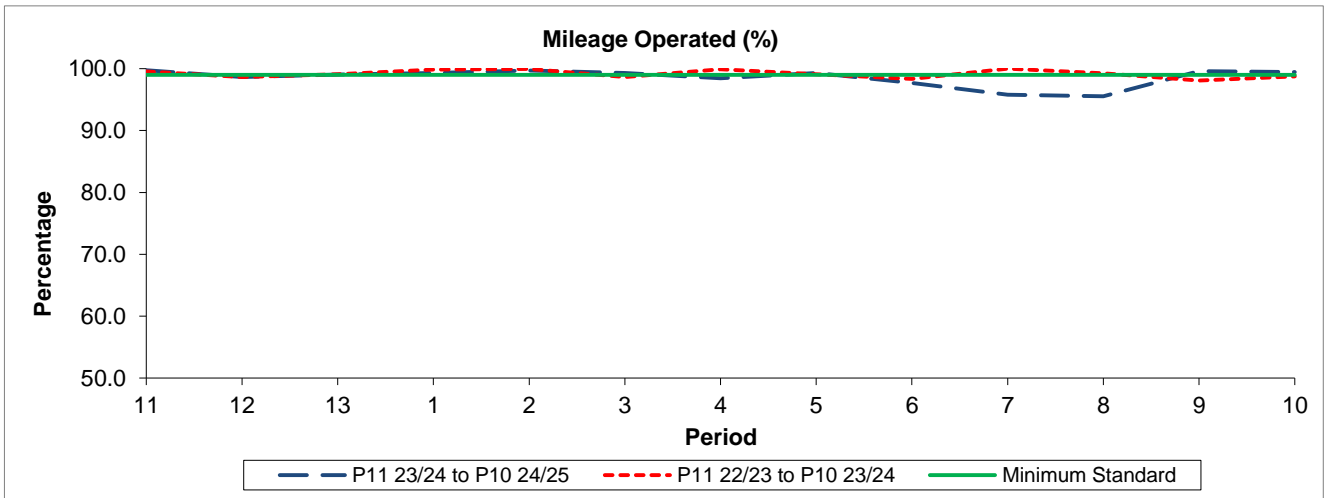
Reliability Performance



Period	11	12	13	1	2	3	4	5	6	7	8	9	10
P11 23/24 to P10 24/25	91.33	90.95	87.56	97.39	90.55	90.51	90.02	89.31	76.71	52.31	58.41	92.07	82.26
P11 22/23 to P10 23/24	84.62	83.52	64.60	88.98	93.96	91.76	92.57	90.37	87.34	90.97	92.01	91.96	87.99
Minimum Standard	90.00	90.00	90.00	90.00	90.00	90.00	90.00	90.00	90.00	90.00	90.00	90.00	90.00

% On Time performance figures are based on four weeks data

Mileage Performance



Period	11	12	13	1	2	3	4	5	6	7	8	9	10
P11 23/24 to P10 24/25	99.75	98.65	99.04	99.29	99.69	99.32	98.44	99.31	97.71	95.76	95.54	99.62	99.43
P11 22/23 to P10 23/24	99.56	98.66	99.11	99.85	99.95	98.64	99.92	99.09	98.36	100.00	99.24	98.08	98.76
Minimum Standard	99.00	99.00	99.00	99.00	99.00	99.00	99.00	99.00	99.00	99.00	99.00	99.00	99.00

Mileage Performance figures are based on four weeks data