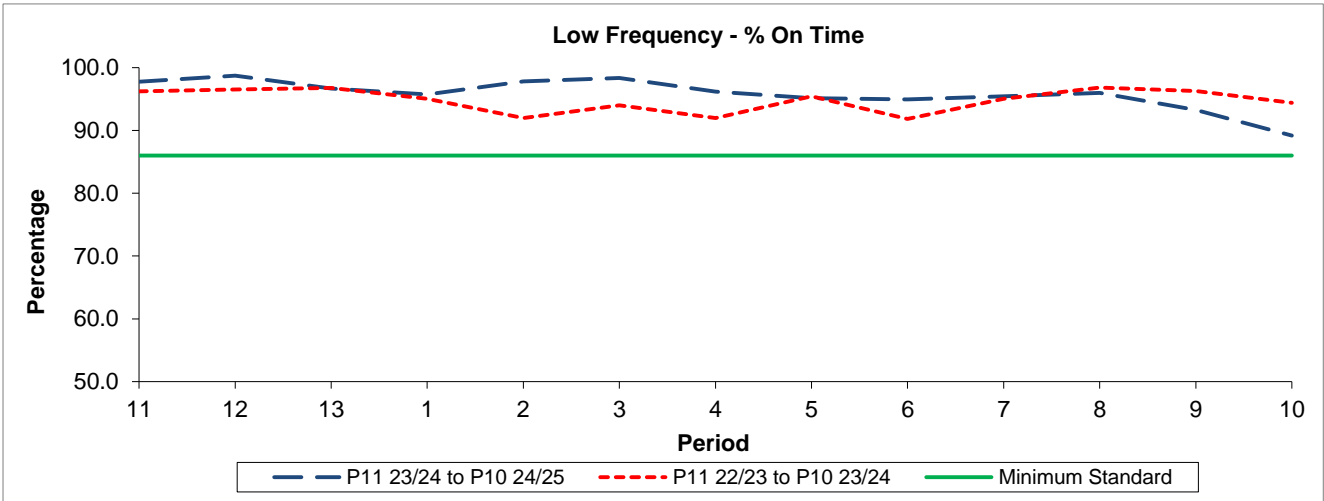


QSI & Mileage Performance Results

Route N31

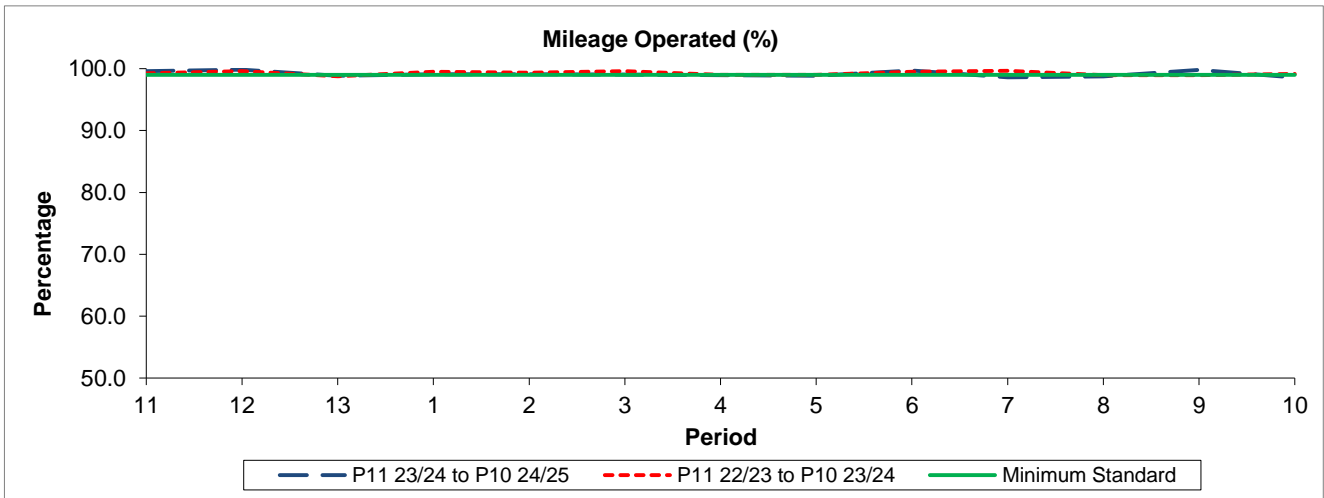
Reliability Performance



Period	11	12	13	1	2	3	4	5	6	7	8	9	10
P11 23/24 to P10 24/25	97.77	98.72	96.69	95.74	97.79	98.34	96.19	95.15	94.96	95.46	95.98	93.25	89.18
P11 22/23 to P10 23/24	96.24	96.51	96.76	95.02	91.97	93.99	91.95	95.45	91.84	95.02	96.82	96.30	94.38
Minimum Standard	86.00	86.00	86.00	86.00	86.00	86.00	86.00	86.00	86.00	86.00	86.00	86.00	86.00

% On Time performance figures are based on four weeks data

Mileage Performance



Period	11	12	13	1	2	3	4	5	6	7	8	9	10
P11 23/24 to P10 24/25	99.59	99.84	98.85	99.12	99.11	99.06	98.93	98.85	99.68	98.58	98.76	99.82	98.57
P11 22/23 to P10 23/24	99.25	99.60	98.77	99.51	99.37	99.58	99.01	98.99	99.52	99.66	98.93	98.95	99.14
Minimum Standard	99.00	99.00	99.00	99.00	99.00	99.00	99.00	99.00	99.00	99.00	99.00	99.00	99.00

Mileage Performance figures are based on four weeks data