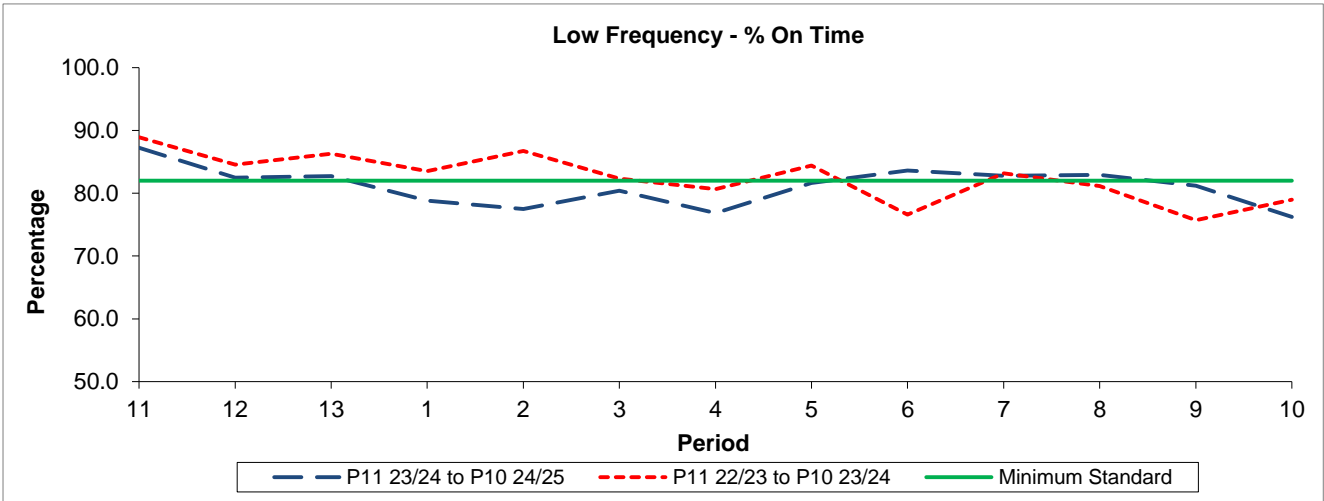


QSI & Mileage Performance Results

# Route N3

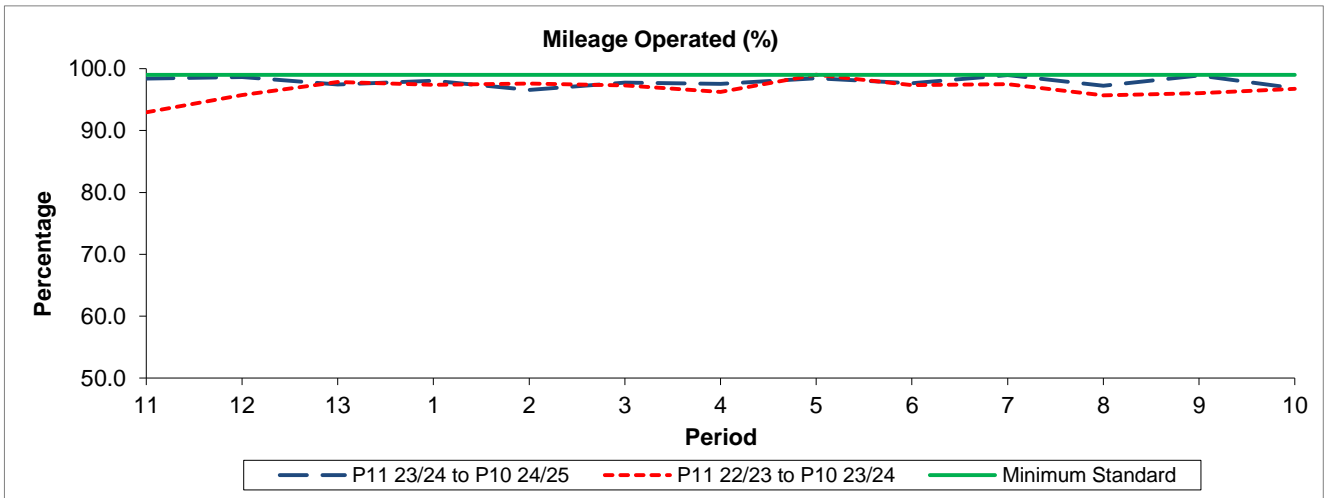
## Reliability Performance



Period	11	12	13	1	2	3	4	5	6	7	8	9	10
P11 23/24 to P10 24/25	87.24	82.50	82.75	78.82	77.50	80.41	76.87	81.64	83.64	82.79	82.95	81.21	76.23
P11 22/23 to P10 23/24	88.92	84.56	86.31	83.53	86.71	82.33	80.67	84.39	76.58	83.18	81.14	75.71	78.98
Minimum Standard	82.00	82.00	82.00	82.00	82.00	82.00	82.00	82.00	82.00	82.00	82.00	82.00	82.00

% On Time performance figures are based on four weeks data

## Mileage Performance



Period	11	12	13	1	2	3	4	5	6	7	8	9	10
P11 23/24 to P10 24/25	98.38	98.63	97.42	98.07	96.56	97.73	97.55	98.43	97.66	98.96	97.24	98.91	96.84
P11 22/23 to P10 23/24	92.95	95.71	97.82	97.37	97.58	97.30	96.25	99.02	97.32	97.48	95.70	96.04	96.72
Minimum Standard	99.00	99.00	99.00	99.00	99.00	99.00	99.00	99.00	99.00	99.00	99.00	99.00	99.00

Mileage Performance figures are based on four weeks data