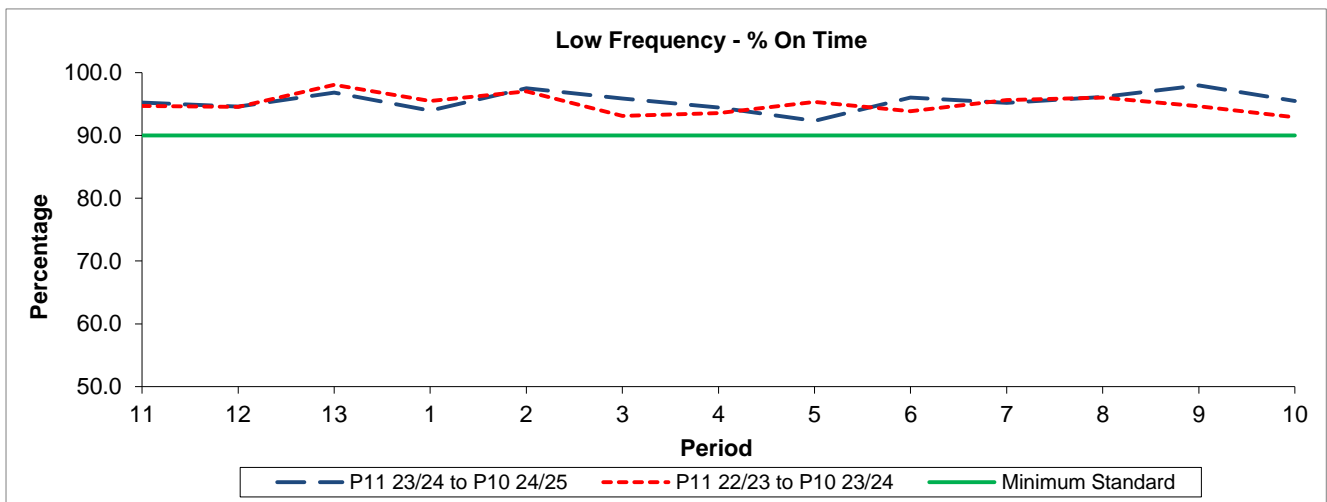


QSI & Mileage Performance Results

# Route N297

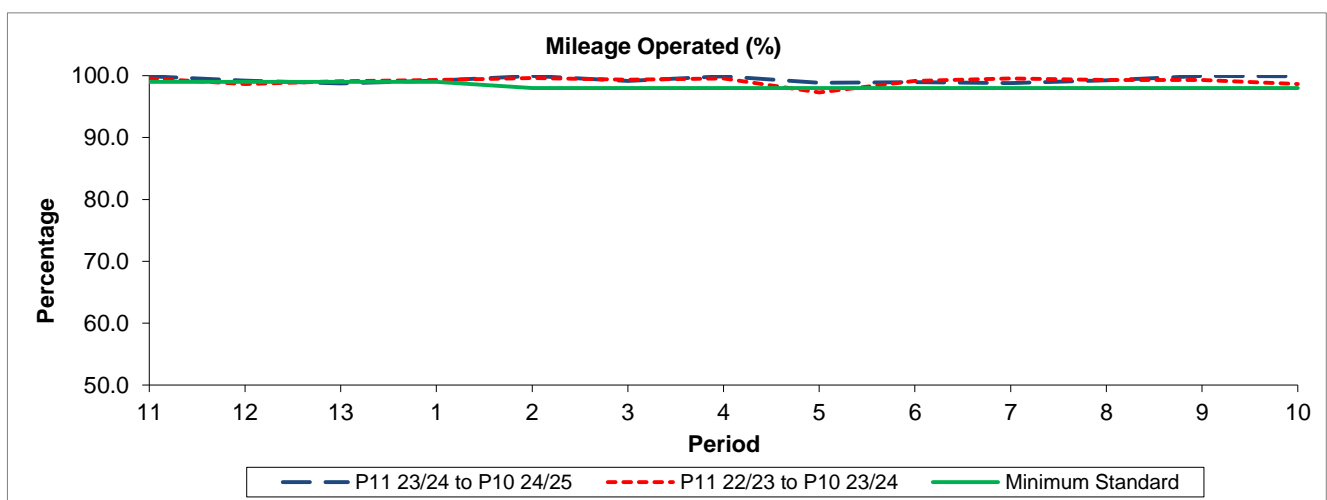
## Reliability Performance



Period	11	12	13	1	2	3	4	5	6	7	8	9	10
P11 23/24 to P10 24/25	95.26	94.58	96.81	93.94	97.52	95.86	94.46	92.32	96.03	95.19	96.13	97.96	95.47
P11 22/23 to P10 23/24	94.68	94.53	98.06	95.50	97.03	93.10	93.58	95.34	93.88	95.62	96.01	94.64	92.89
Minimum Standard	90.00	90.00	90.00	90.00	90.00	90.00	90.00	90.00	90.00	90.00	90.00	90.00	90.00

% On Time performance figures are based on four weeks data

## Mileage Performance



Period	11	12	13	1	2	3	4	5	6	7	8	9	10
P11 23/24 to P10 24/25	99.89	99.19	98.75	99.21	99.95	99.17	99.89	98.87	98.94	98.82	99.26	99.96	99.92
P11 22/23 to P10 23/24	99.53	98.66	99.08	99.29	99.62	99.35	99.53	97.29	99.14	99.53	99.29	99.32	98.67
Minimum Standard	99.00	99.00	99.00	99.00	98.00	98.00	98.00	98.00	98.00	98.00	98.00	98.00	98.00

Mileage Performance figures are based on four weeks data