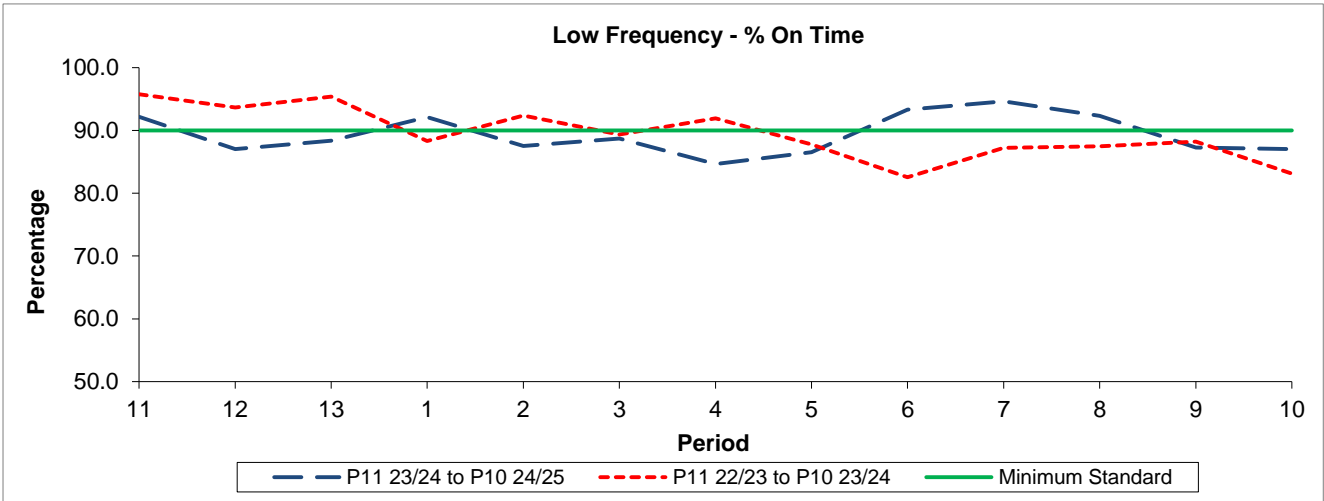


QSI & Mileage Performance Results

Route N285

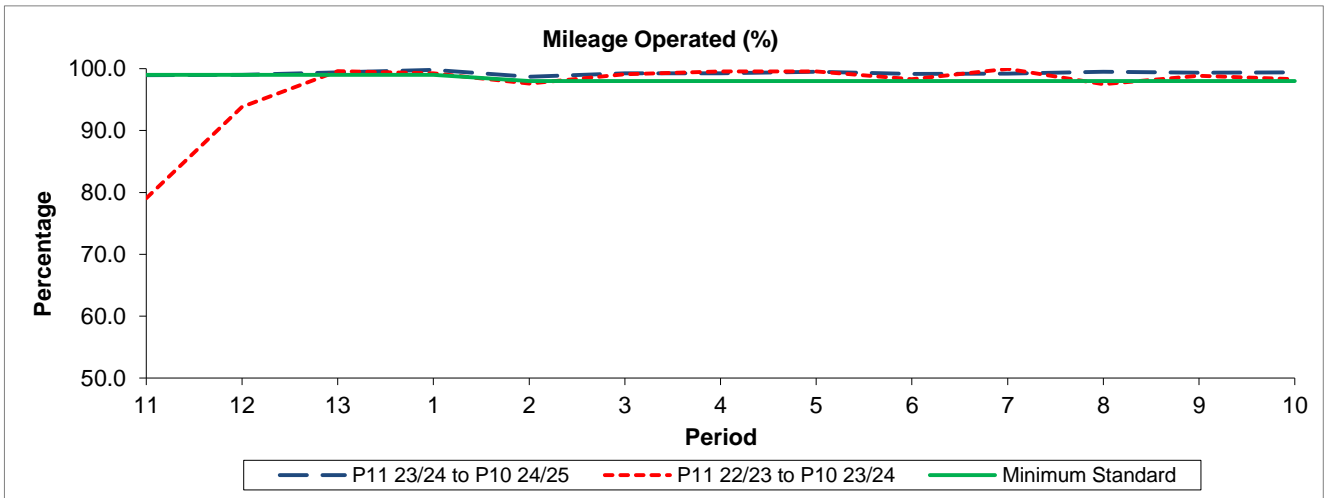
Reliability Performance



Period	11	12	13	1	2	3	4	5	6	7	8	9	10
P11 23/24 to P10 24/25	92.19	87.01	88.38	92.15	87.51	88.71	84.65	86.55	93.32	94.63	92.34	87.28	87.01
P11 22/23 to P10 23/24	95.76	93.65	95.39	88.30	92.37	89.34	91.91	87.79	82.55	87.23	87.48	88.23	83.15
Minimum Standard	90.00	90.00	90.00	90.00	90.00	90.00	90.00	90.00	90.00	90.00	90.00	90.00	90.00

% On Time performance figures are based on four weeks data

Mileage Performance



Period	11	12	13	1	2	3	4	5	6	7	8	9	10
P11 23/24 to P10 24/25	98.94	99.00	99.39	99.81	98.69	99.25	99.23	99.49	99.14	99.19	99.49	99.37	99.38
P11 22/23 to P10 23/24	79.06	93.81	99.59	99.25	97.59	99.11	99.55	99.54	98.28	99.96	97.50	98.82	98.29
Minimum Standard	99.00	99.00	99.00	99.00	98.00	98.00	98.00	98.00	98.00	98.00	98.00	98.00	98.00

Mileage Performance figures are based on four weeks data