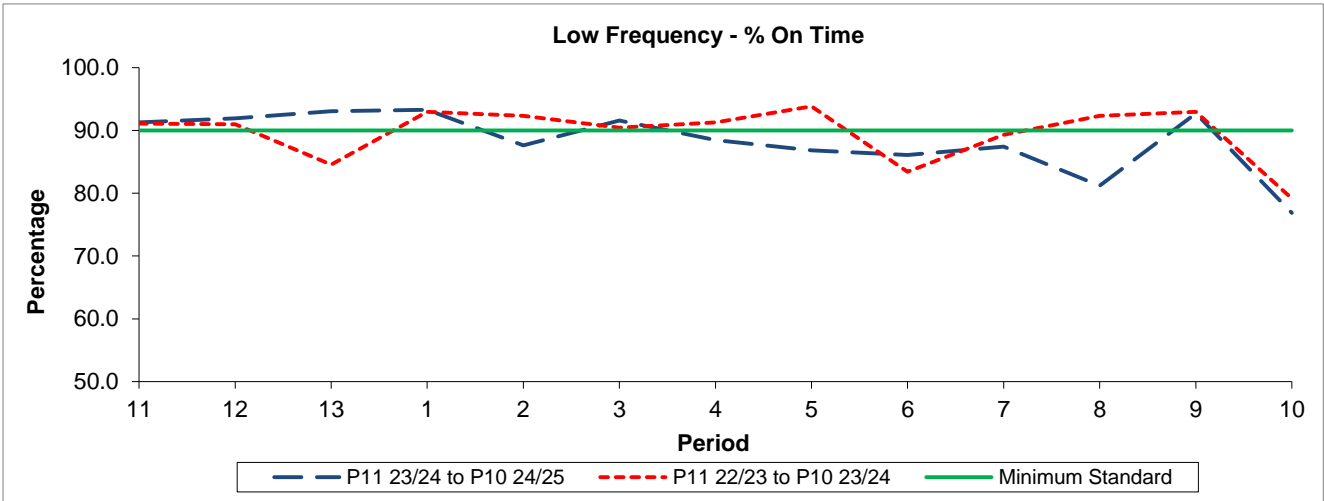


QSI & Mileage Performance Results

Route N281

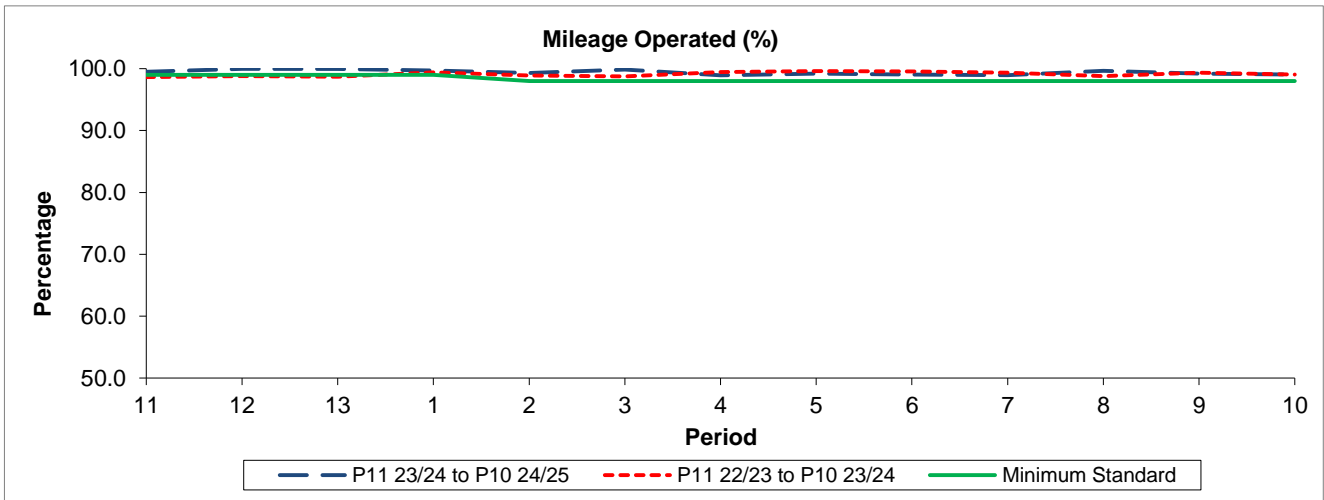
Reliability Performance



Period	11	12	13	1	2	3	4	5	6	7	8	9	10
P11 23/24 to P10 24/25	91.30	91.90	93.06	93.29	87.63	91.60	88.47	86.82	86.10	87.41	81.20	92.73	76.87
P11 22/23 to P10 23/24	91.10	90.97	84.54	92.95	92.34	90.43	91.28	93.83	83.44	89.30	92.31	92.95	79.16
Minimum Standard	90.00	90.00	90.00	90.00	90.00	90.00	90.00	90.00	90.00	90.00	90.00	90.00	90.00

% On Time performance figures are based on four weeks data

Mileage Performance



Period	11	12	13	1	2	3	4	5	6	7	8	9	10
P11 23/24 to P10 24/25	99.48	99.97	99.95	99.69	99.31	99.84	98.93	99.21	99.04	98.95	99.67	99.19	99.06
P11 22/23 to P10 23/24	98.64	98.78	98.69	99.38	98.92	98.76	99.43	99.61	99.53	99.37	98.79	99.34	99.07
Minimum Standard	99.00	99.00	99.00	99.00	98.00	98.00	98.00	98.00	98.00	98.00	98.00	98.00	98.00

Mileage Performance figures are based on four weeks data