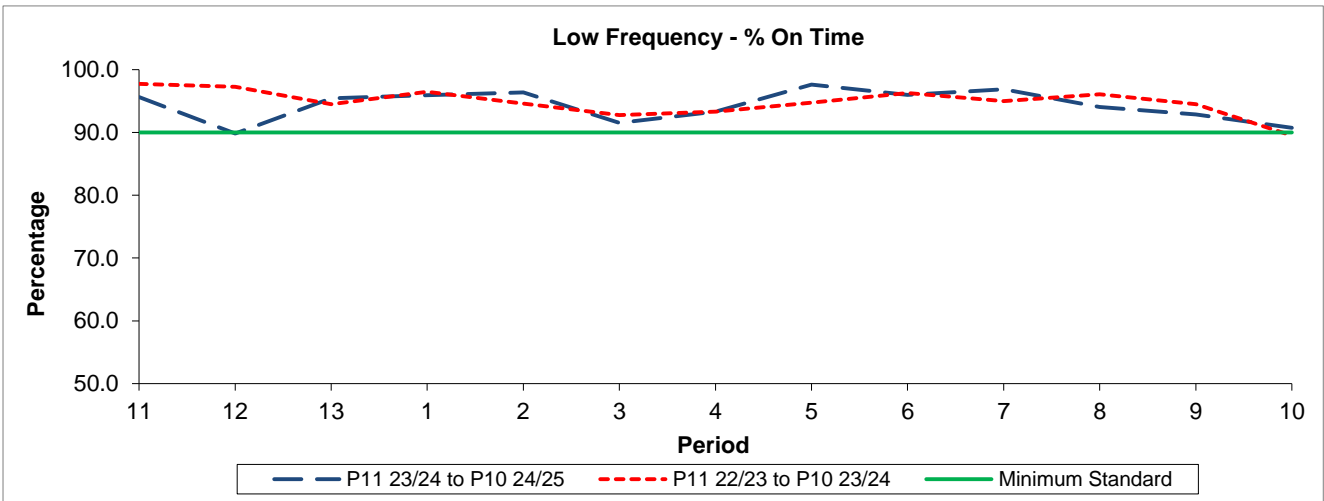


QSI & Mileage Performance Results

Route N271

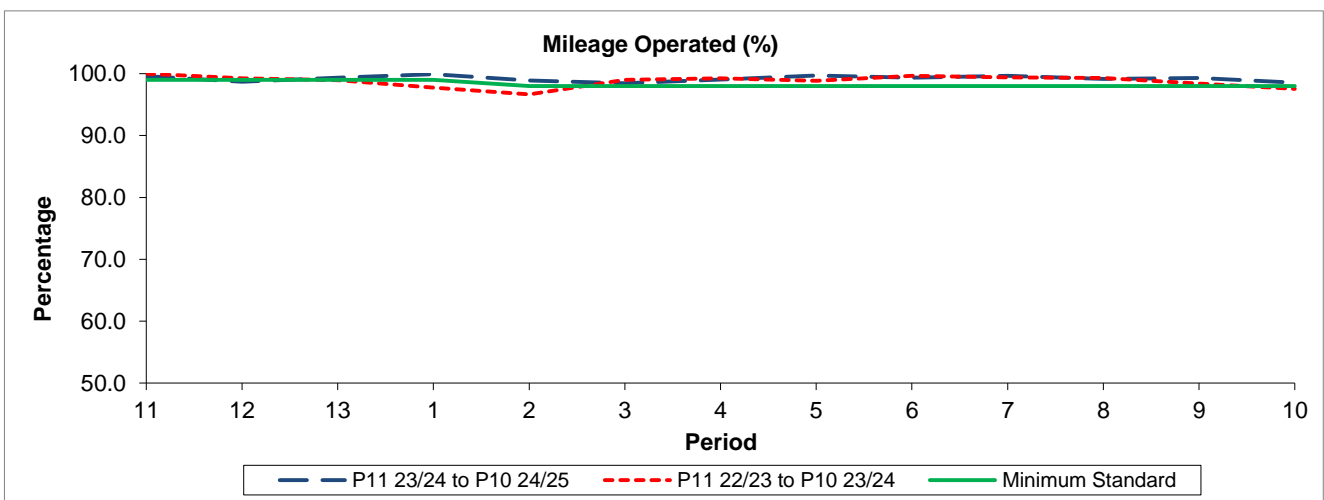
Reliability Performance



Period	11	12	13	1	2	3	4	5	6	7	8	9	10
P11 23/24 to P10 24/25	95.62	89.83	95.43	95.93	96.40	91.53	93.29	97.62	96.00	96.87	94.07	92.89	90.74
P11 22/23 to P10 23/24	97.73	97.29	94.51	96.49	94.59	92.78	93.32	94.75	96.26	94.97	96.10	94.48	89.49
Minimum Standard	90.00	90.00	90.00	90.00	90.00	90.00	90.00	90.00	90.00	90.00	90.00	90.00	90.00

% On Time performance figures are based on four weeks data

Mileage Performance



Period	11	12	13	1	2	3	4	5	6	7	8	9	10
P11 23/24 to P10 24/25	99.61	98.71	99.33	99.91	98.87	98.45	99.03	99.68	99.33	99.64	99.13	99.29	98.53
P11 22/23 to P10 23/24	100.00	99.23	98.93	97.74	96.65	99.02	99.23	98.84	99.63	99.39	99.30	98.40	97.53
Minimum Standard	99.00	99.00	99.00	99.00	98.00	98.00	98.00	98.00	98.00	98.00	98.00	98.00	98.00

Mileage Performance figures are based on four weeks data