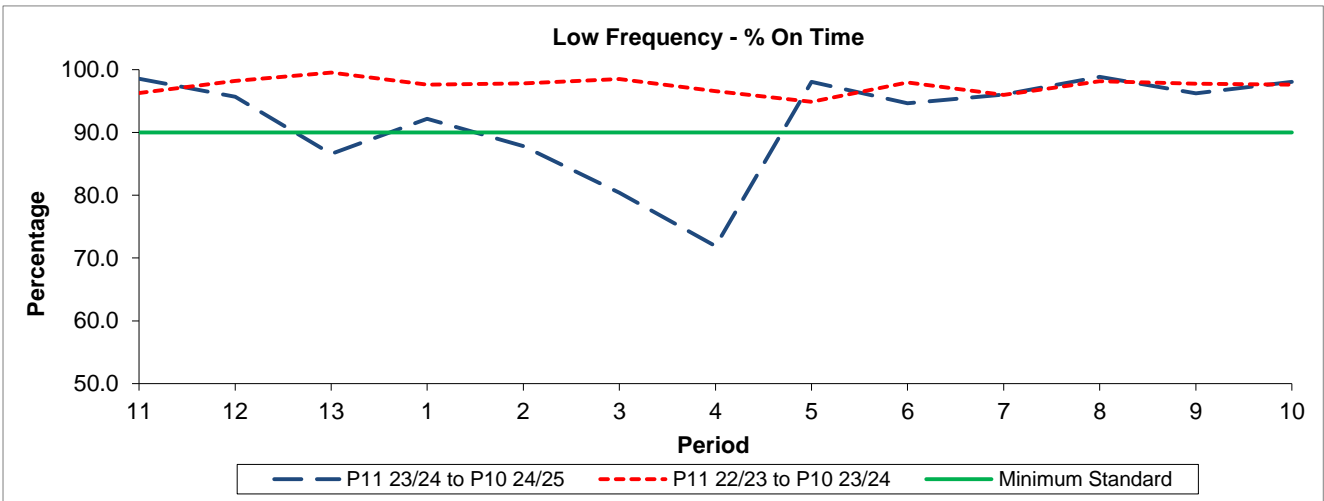


QSI & Mileage Performance Results

Route N264

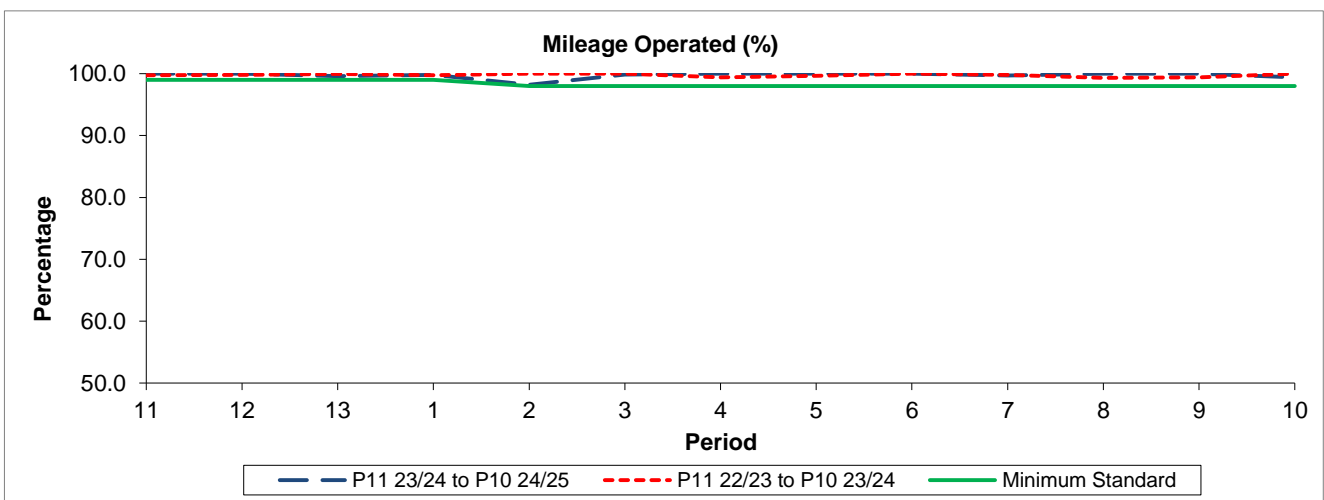
Reliability Performance



Period	11	12	13	1	2	3	4	5	6	7	8	9	10
P11 23/24 to P10 24/25	98.53	95.66	86.57	92.15	87.82	80.40	71.89	98.06	94.62	96.05	98.86	96.24	98.06
P11 22/23 to P10 23/24	96.29	98.21	99.53	97.63	97.79	98.52	96.56	94.88	97.96	95.96	98.17	97.76	97.60
Minimum Standard	90.00	90.00	90.00	90.00	90.00	90.00	90.00	90.00	90.00	90.00	90.00	90.00	90.00

% On Time performance figures are based on four weeks data

Mileage Performance



Period	11	12	13	1	2	3	4	5	6	7	8	9	10
P11 23/24 to P10 24/25	99.98	100.00	99.62	99.78	98.20	99.85	100.00	100.00	100.00	99.70	100.00	100.00	99.40
P11 22/23 to P10 23/24	99.77	99.80	99.96	99.73	100.00	100.00	99.40	99.68	100.00	99.79	99.32	99.42	100.00
Minimum Standard	98.00	98.00	98.00	98.00	98.00	98.00	98.00	98.00	98.00	98.00	98.00	98.00	98.00

Mileage Performance figures are based on four weeks data