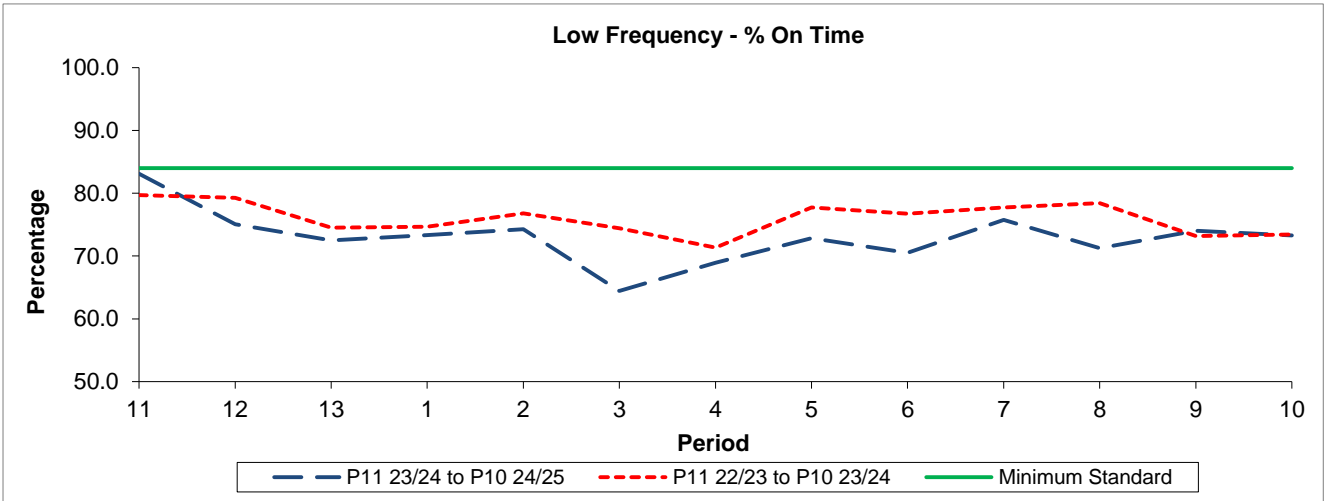


QSI & Mileage Performance Results

# Route N26

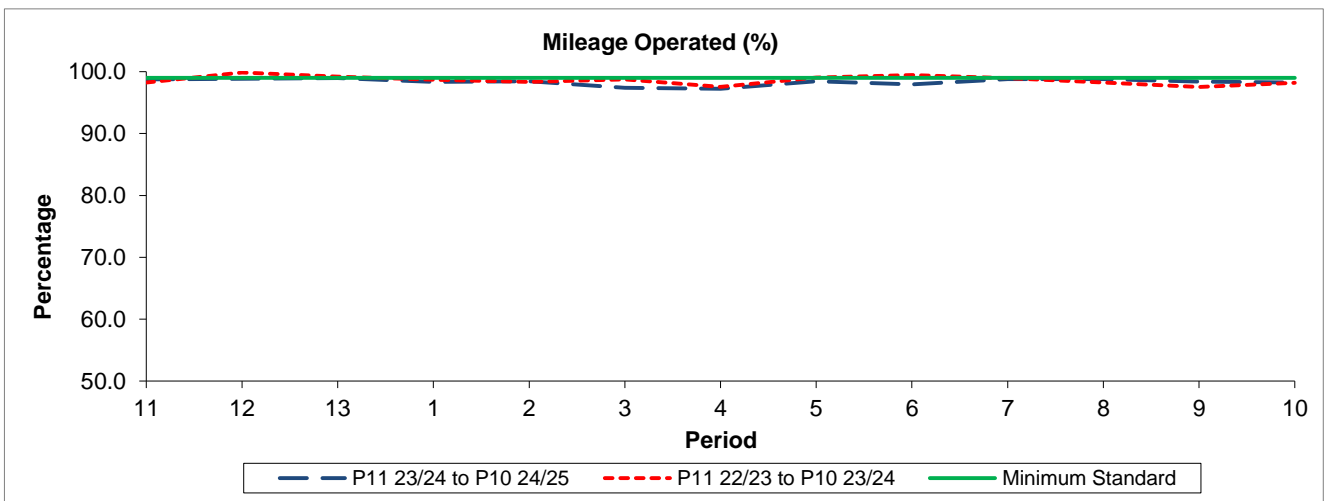
## Reliability Performance



Period	11	12	13	1	2	3	4	5	6	7	8	9	10
P11 23/24 to P10 24/25	83.10	75.09	72.49	73.35	74.26	64.44	68.91	72.85	70.54	75.73	71.27	74.02	73.27
P11 22/23 to P10 23/24	79.70	79.25	74.53	74.65	76.77	74.41	71.34	77.71	76.72	77.73	78.44	73.16	73.42
Minimum Standard	84.00	84.00	84.00	84.00	84.00	84.00	84.00	84.00	84.00	84.00	84.00	84.00	84.00

% On Time performance figures are based on four weeks data

## Mileage Performance



Period	11	12	13	1	2	3	4	5	6	7	8	9	10
P11 23/24 to P10 24/25	98.75	98.84	98.96	98.37	98.45	97.38	97.24	98.47	97.93	98.79	98.82	98.42	98.27
P11 22/23 to P10 23/24	98.25	99.86	99.20	98.70	98.35	98.77	97.57	99.05	99.44	98.97	98.25	97.52	98.21
Minimum Standard	99.00	99.00	99.00	99.00	99.00	99.00	99.00	99.00	99.00	99.00	99.00	99.00	99.00

Mileage Performance figures are based on four weeks data