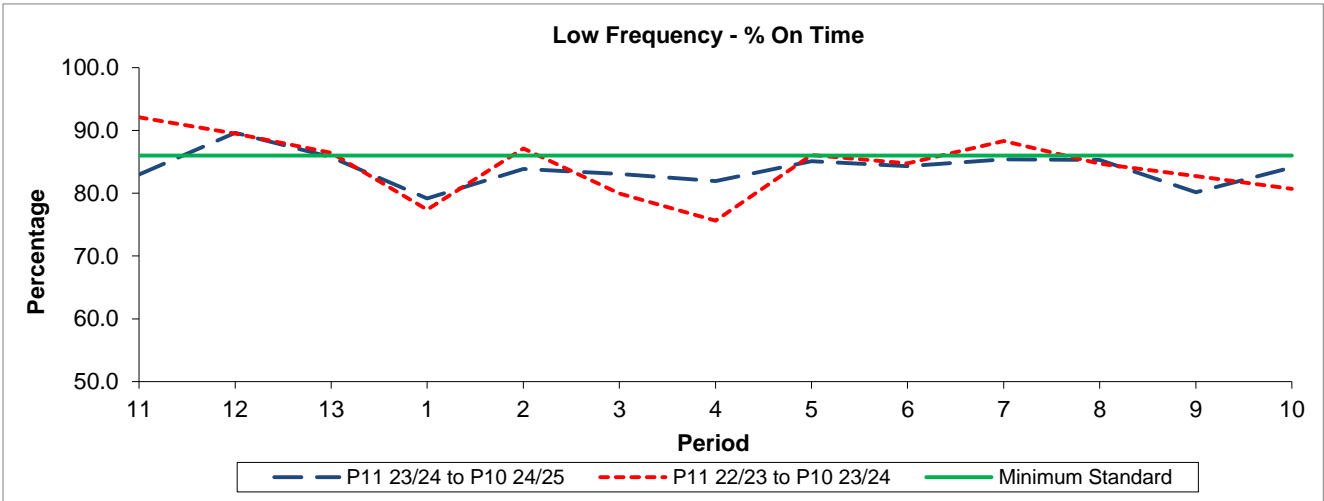


QSI & Mileage Performance Results

Route N253

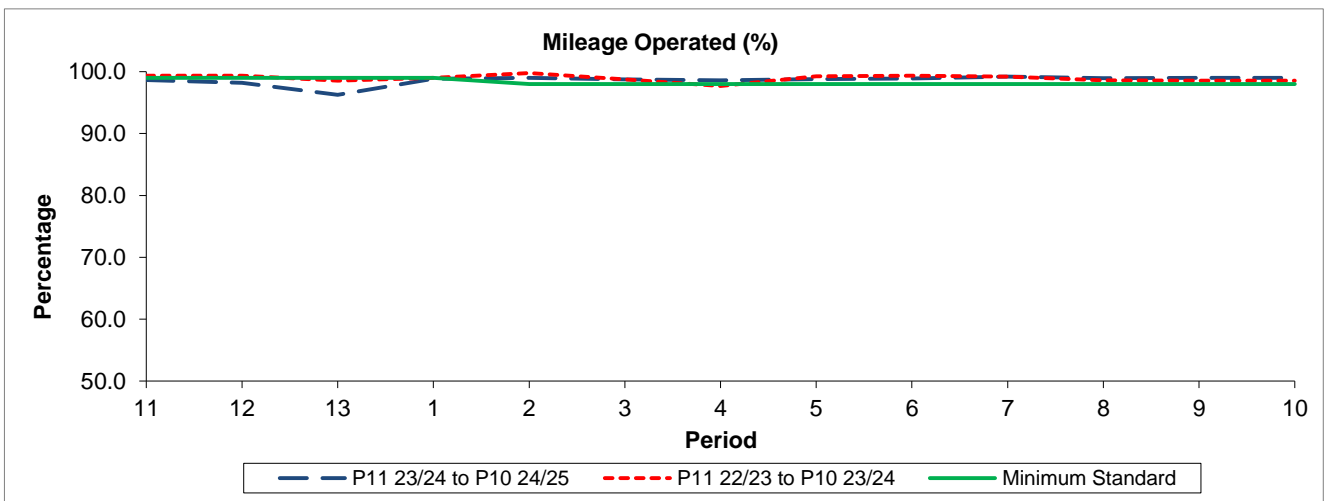
Reliability Performance



Period	11	12	13	1	2	3	4	5	6	7	8	9	10
P11 23/24 to P10 24/25	83.00	89.62	85.77	79.17	83.88	83.06	81.96	85.10	84.30	85.39	85.28	80.14	84.11
P11 22/23 to P10 23/24	92.09	89.49	86.45	77.40	87.13	79.95	75.63	86.10	84.77	88.30	84.73	82.72	80.69
Minimum Standard	86.00	86.00	86.00	86.00	86.00	86.00	86.00	86.00	86.00	86.00	86.00	86.00	86.00

% On Time performance figures are based on four weeks data

Mileage Performance



Period	11	12	13	1	2	3	4	5	6	7	8	9	10
P11 23/24 to P10 24/25	98.66	98.21	96.26	98.86	98.98	98.74	98.61	98.78	98.89	99.20	98.94	99.00	99.02
P11 22/23 to P10 23/24	99.37	99.33	98.55	99.02	99.78	98.73	97.68	99.27	99.35	99.20	98.59	98.56	98.54
Minimum Standard	99.00	99.00	99.00	99.00	98.00	98.00	98.00	98.00	98.00	98.00	98.00	98.00	98.00

Mileage Performance figures are based on four weeks data