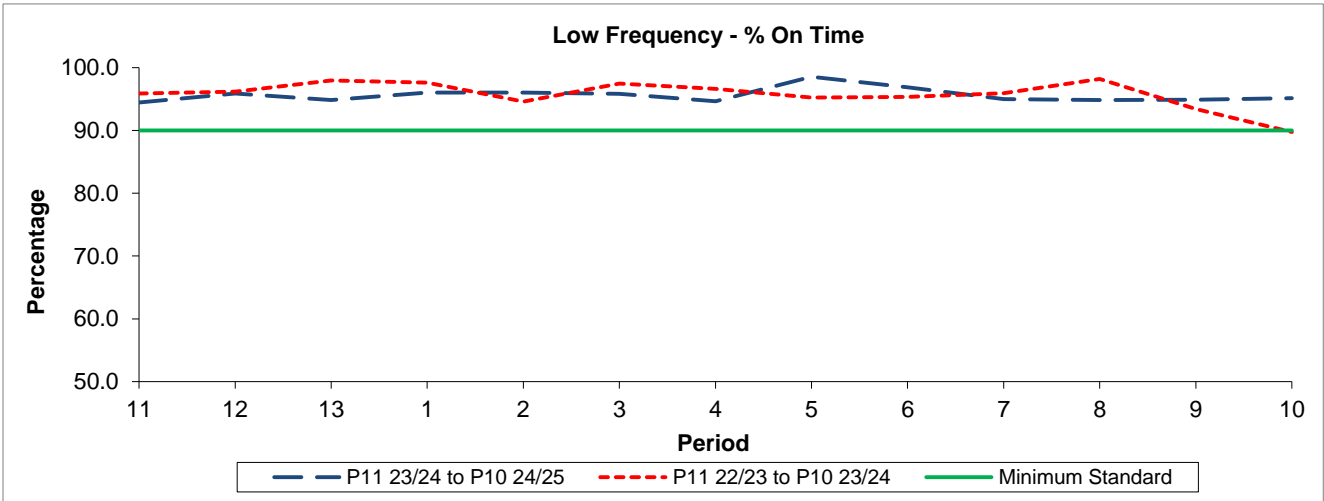


QSI & Mileage Performance Results

# Route N250

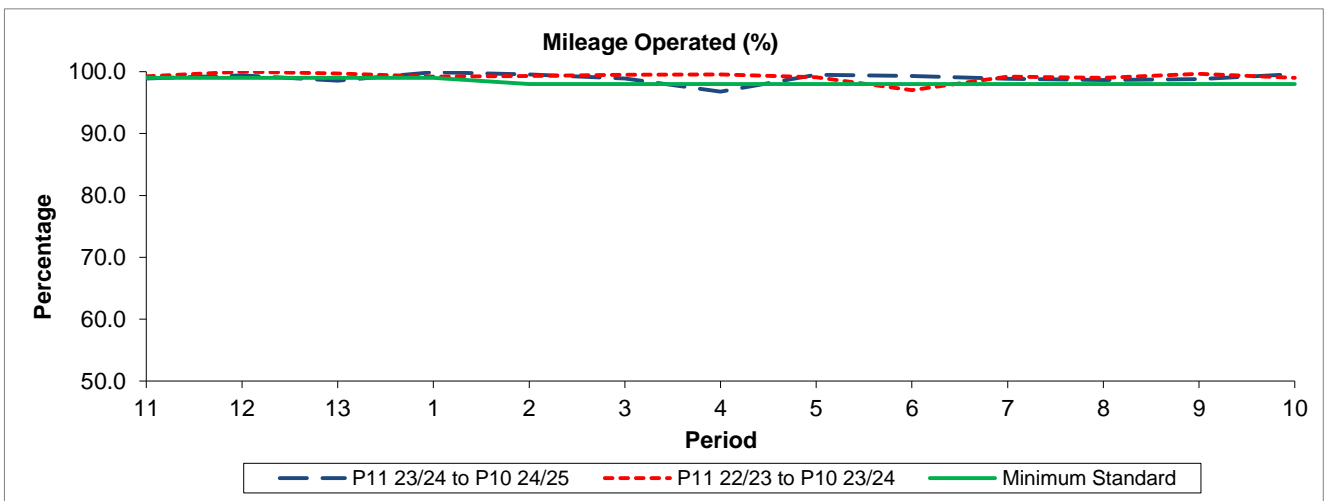
## Reliability Performance



Period	11	12	13	1	2	3	4	5	6	7	8	9	10
P11 23/24 to P10 24/25	94.45	95.87	94.86	96.02	96.01	95.84	94.66	98.54	96.88	94.97	94.85	94.91	95.14
P11 22/23 to P10 23/24	95.87	96.19	97.95	97.61	94.58	97.45	96.61	95.22	95.32	95.96	98.20	93.41	89.75
Minimum Standard	90.00	90.00	90.00	90.00	90.00	90.00	90.00	90.00	90.00	90.00	90.00	90.00	90.00

% On Time performance figures are based on four weeks data

## Mileage Performance



Period	11	12	13	1	2	3	4	5	6	7	8	9	10
P11 23/24 to P10 24/25	98.89	99.38	98.55	99.91	99.57	98.88	96.77	99.51	99.30	98.82	98.65	98.79	99.61
P11 22/23 to P10 23/24	99.25	100.00	99.72	99.18	99.29	99.52	99.53	99.09	97.01	99.20	98.99	99.66	99.01
Minimum Standard	98.00	98.00	98.00	98.00	98.00	98.00	98.00	98.00	98.00	98.00	98.00	98.00	98.00

Mileage Performance figures are based on four weeks data