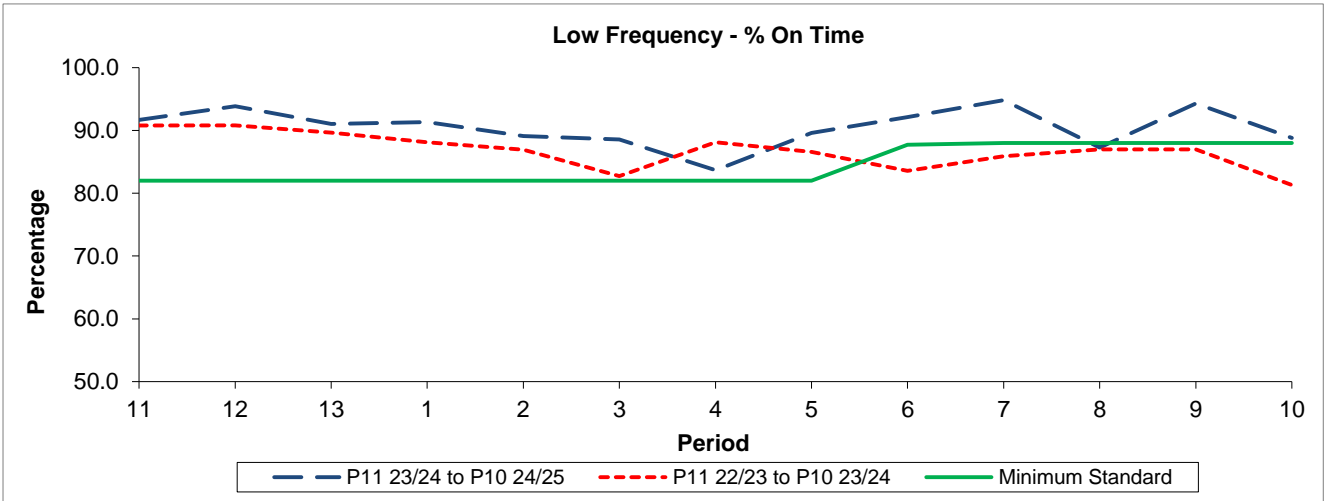


QSI & Mileage Performance Results

Route N243

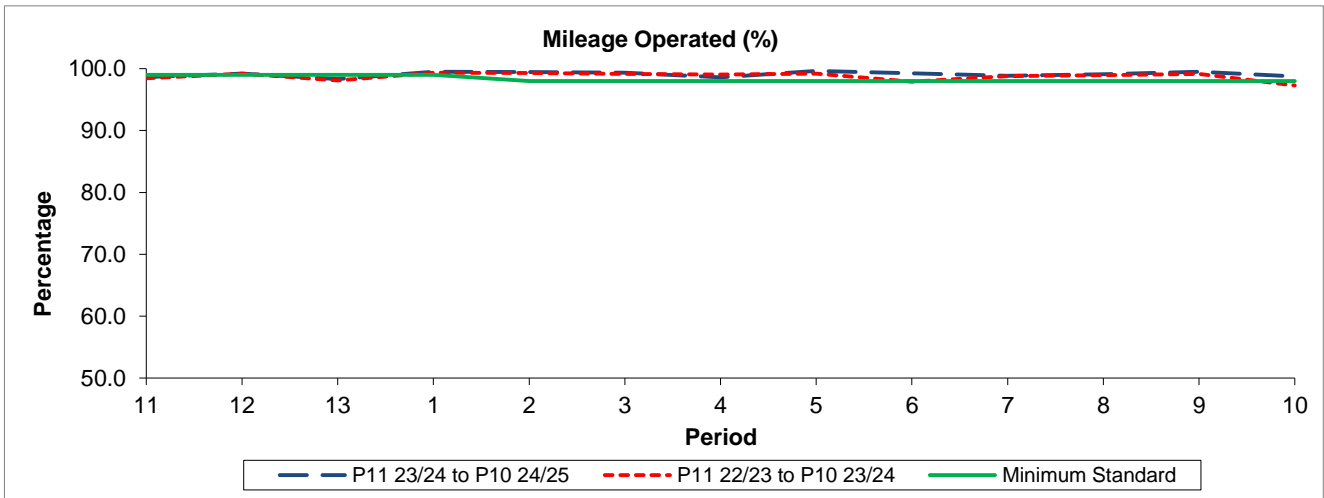
Reliability Performance



Period	11	12	13	1	2	3	4	5	6	7	8	9	10
P11 23/24 to P10 24/25	91.70	93.85	91.02	91.33	89.09	88.55	83.67	89.58	92.13	94.83	87.26	94.31	88.80
P11 22/23 to P10 23/24	90.77	90.81	89.65	88.14	86.95	82.73	88.13	86.58	83.58	85.91	86.98	86.99	81.31
Minimum Standard	82.00	82.00	82.00	82.00	82.00	82.00	82.00	82.00	87.72	88.00	88.00	88.00	88.00

% On Time performance figures are based on four weeks data

Mileage Performance



Period	11	12	13	1	2	3	4	5	6	7	8	9	10
P11 23/24 to P10 24/25	98.62	99.22	98.32	99.48	99.43	99.35	98.59	99.63	99.26	98.84	99.09	99.52	98.73
P11 22/23 to P10 23/24	98.45	99.21	98.10	99.34	99.28	99.17	99.05	99.19	97.90	98.79	98.95	99.16	97.29
Minimum Standard	99.00	99.00	99.00	99.00	98.00	98.00	98.00	98.00	98.00	98.00	98.00	98.00	98.00

Mileage Performance figures are based on four weeks data