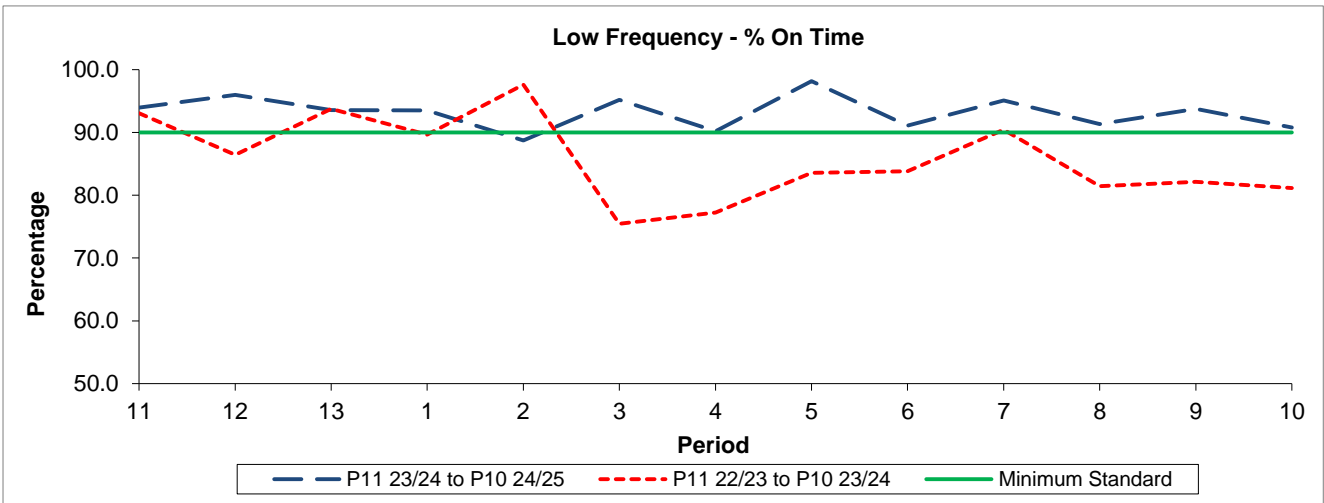


QSI & Mileage Performance Results

# Route N23

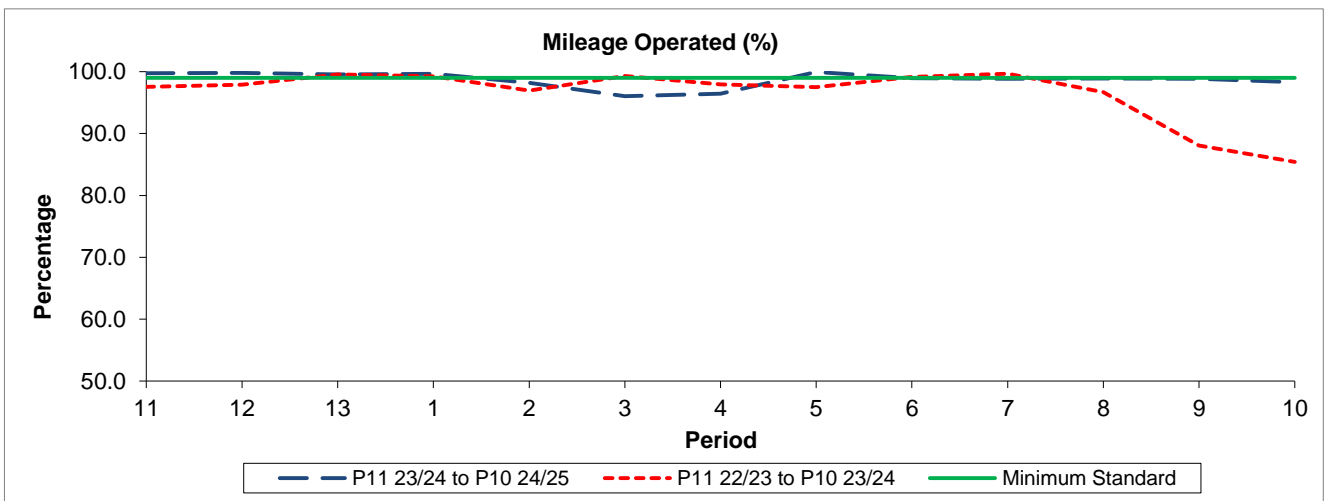
## Reliability Performance



Period	11	12	13	1	2	3	4	5	6	7	8	9	10
P11 23/24 to P10 24/25	93.97	95.99	93.57	93.50	88.73	95.16	90.18	98.17	91.06	95.11	91.31	93.76	90.81
P11 22/23 to P10 23/24	93.06	86.46	93.75	89.65	97.61	75.46	77.24	83.54	83.82	90.44	81.45	82.15	81.13
Minimum Standard	90.00	90.00	90.00	90.00	90.00	90.00	90.00	90.00	90.00	90.00	90.00	90.00	90.00

% On Time performance figures are based on four weeks data

## Mileage Performance



Period	11	12	13	1	2	3	4	5	6	7	8	9	10
P11 23/24 to P10 24/25	99.77	99.81	99.56	99.66	98.20	96.04	96.45	99.94	98.93	98.85	98.90	98.86	98.30
P11 22/23 to P10 23/24	97.52	97.88	99.55	99.23	96.95	99.28	97.95	97.47	99.16	99.67	96.71	88.06	85.41
Minimum Standard	99.00	99.00	99.00	99.00	99.00	99.00	99.00	99.00	99.00	99.00	99.00	99.00	99.00

Mileage Performance figures are based on four weeks data