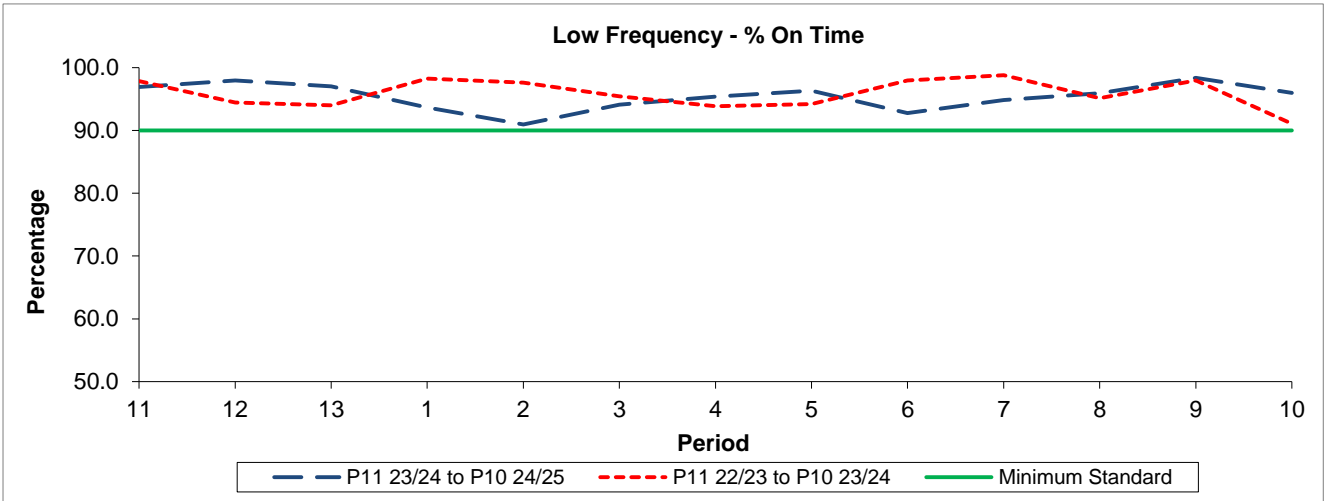


QSI & Mileage Performance Results

# Route N213

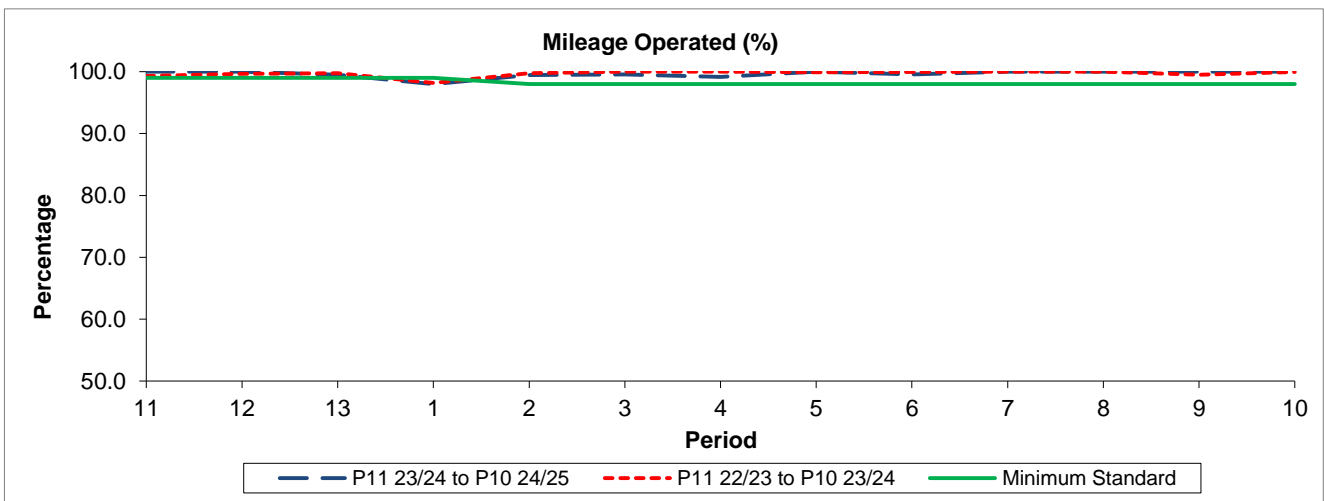
## Reliability Performance



| Period                 | 11    | 12    | 13    | 1     | 2     | 3     | 4     | 5     | 6     | 7     | 8     | 9     | 10    |
|------------------------|-------|-------|-------|-------|-------|-------|-------|-------|-------|-------|-------|-------|-------|
| P11 23/24 to P10 24/25 | 96.93 | 97.97 | 97.02 | 93.65 | 90.95 | 94.09 | 95.38 | 96.30 | 92.77 | 94.83 | 95.96 | 98.38 | 95.98 |
| P11 22/23 to P10 23/24 | 97.85 | 94.44 | 94.02 | 98.25 | 97.64 | 95.45 | 93.84 | 94.22 | 97.96 | 98.80 | 95.15 | 97.96 | 91.07 |
| Minimum Standard       | 90.00 | 90.00 | 90.00 | 90.00 | 90.00 | 90.00 | 90.00 | 90.00 | 90.00 | 90.00 | 90.00 | 90.00 | 90.00 |

% On Time performance figures are based on four weeks data

## Mileage Performance



| Period                 | 11     | 12     | 13    | 1     | 2     | 3      | 4     | 5      | 6     | 7      | 8      | 9      | 10     |
|------------------------|--------|--------|-------|-------|-------|--------|-------|--------|-------|--------|--------|--------|--------|
| P11 23/24 to P10 24/25 | 100.00 | 100.00 | 99.52 | 97.98 | 99.43 | 99.53  | 99.16 | 100.00 | 99.53 | 100.00 | 100.00 | 100.00 | 100.00 |
| P11 22/23 to P10 23/24 | 99.31  | 99.66  | 99.74 | 98.18 | 99.74 | 100.00 | 99.98 | 99.91  | 99.95 | 100.00 | 100.00 | 99.49  | 99.93  |
| Minimum Standard       | 99.00  | 99.00  | 99.00 | 99.00 | 98.00 | 98.00  | 98.00 | 98.00  | 98.00 | 98.00  | 98.00  | 98.00  | 98.00  |

Mileage Performance figures are based on four weeks data