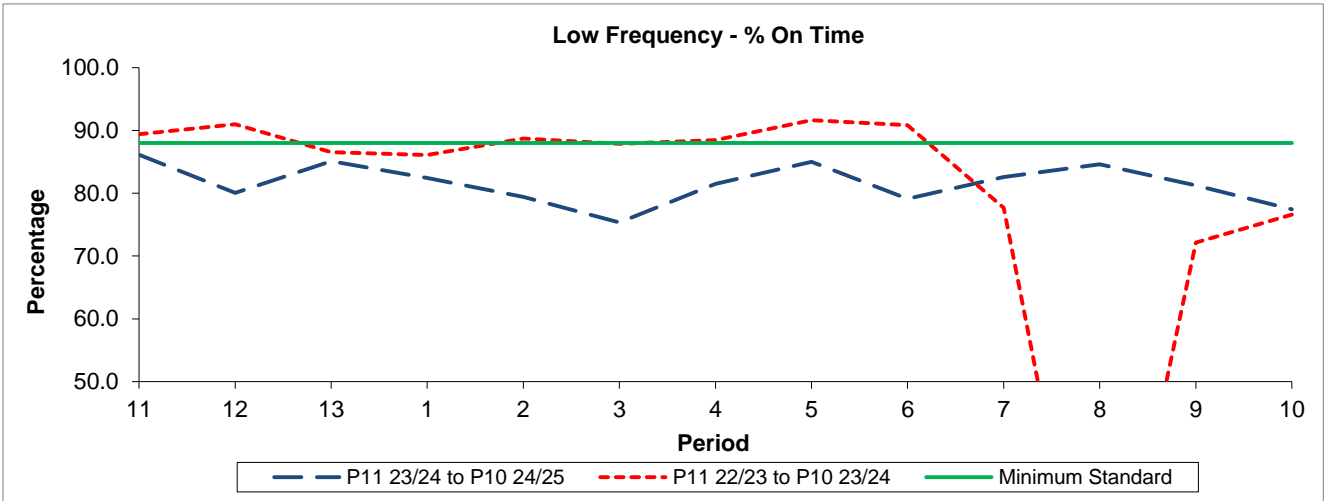


QSI & Mileage Performance Results

Route N21

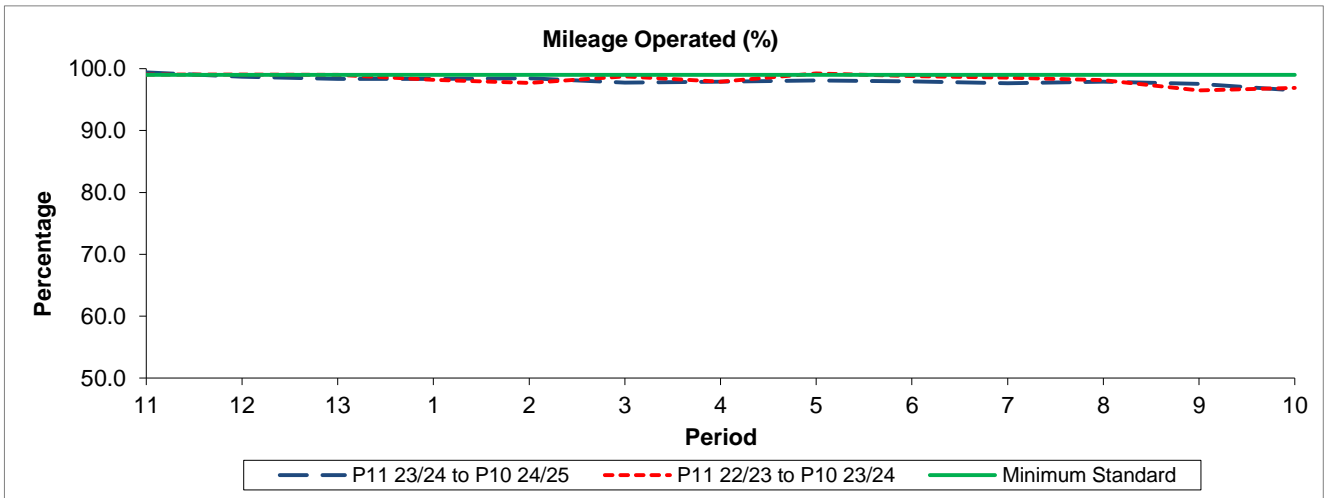
Reliability Performance



Period	11	12	13	1	2	3	4	5	6	7	8	9	10
P11 23/24 to P10 24/25	86.13	80.05	85.09	82.44	79.41	75.34	81.47	85.00	79.10	82.60	84.62	81.24	77.45
P11 22/23 to P10 23/24	89.39	90.99	86.53	86.08	88.73	87.87	88.48	91.63	90.86	77.70	-	72.15	76.61
Minimum Standard	88.00	88.00	88.00	88.00	88.00	88.00	88.00	88.00	88.00	88.00	88.00	88.00	88.00

% On Time performance figures are based on four weeks data

Mileage Performance



Period	11	12	13	1	2	3	4	5	6	7	8	9	10
P11 23/24 to P10 24/25	99.39	98.68	98.34	98.37	98.46	97.76	97.90	98.09	97.97	97.62	97.90	97.54	96.49
P11 22/23 to P10 23/24	99.07	99.06	98.98	98.21	97.69	98.74	97.91	99.23	98.79	98.53	98.16	96.49	96.90
Minimum Standard	99.00	99.00	99.00	99.00	99.00	99.00	99.00	99.00	99.00	99.00	99.00	99.00	99.00

Mileage Performance figures are based on four weeks data