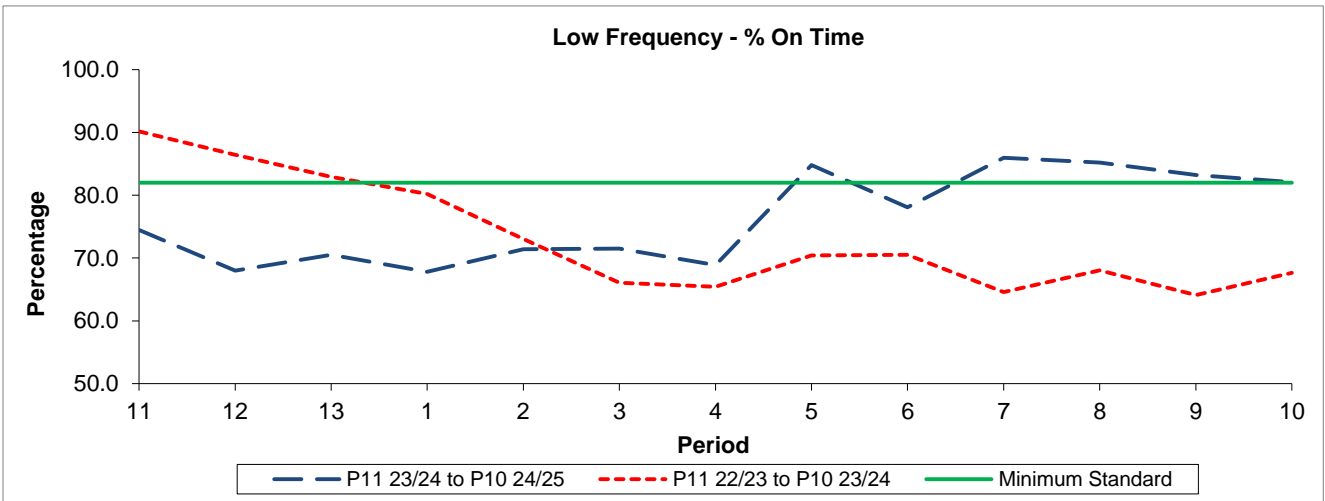


QSI & Mileage Performance Results

Route N207

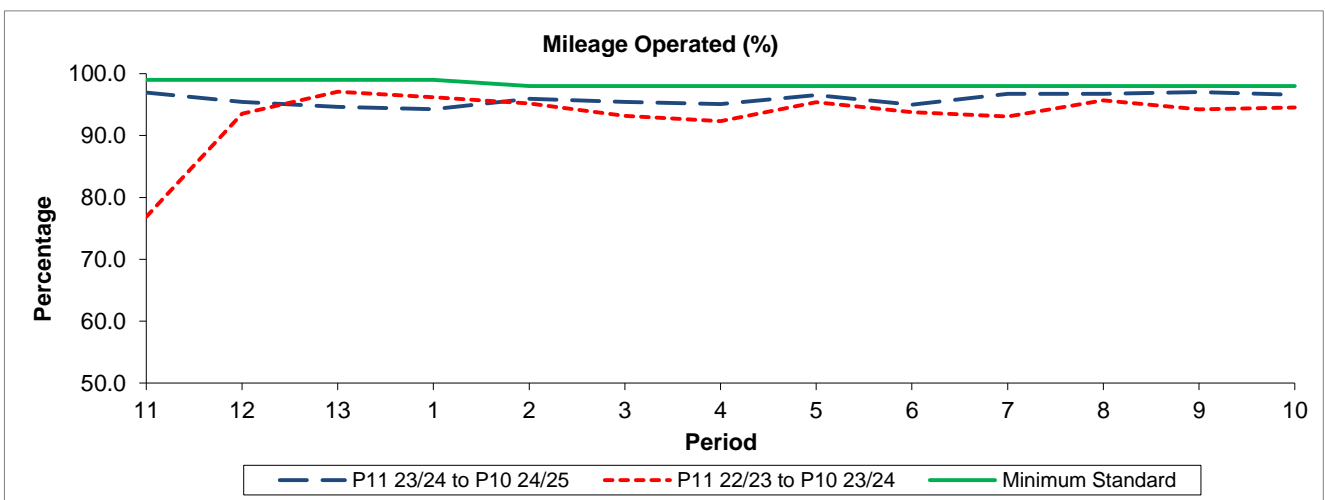
Reliability Performance



Period	11	12	13	1	2	3	4	5	6	7	8	9	10
P11 23/24 to P10 24/25	74.49	68.00	70.52	67.80	71.42	71.48	68.88	84.81	78.06	85.97	85.19	83.23	82.06
P11 22/23 to P10 23/24	90.17	86.44	82.92	80.19	73.02	66.07	65.43	70.40	70.53	64.58	68.04	64.10	67.63
Minimum Standard	82.00	82.00	82.00	82.00	82.00	82.00	82.00	82.00	82.00	82.00	82.00	82.00	82.00

% On Time performance figures are based on four weeks data

Mileage Performance



Period	11	12	13	1	2	3	4	5	6	7	8	9	10
P11 23/24 to P10 24/25	96.96	95.45	94.61	94.26	95.92	95.43	95.07	96.55	95.01	96.72	96.73	97.03	96.57
P11 22/23 to P10 23/24	76.87	93.54	97.08	96.21	95.21	93.16	92.31	95.40	93.78	93.06	95.69	94.22	94.55
Minimum Standard	99.00	99.00	99.00	99.00	98.00	98.00	98.00	98.00	98.00	98.00	98.00	98.00	98.00

Mileage Performance figures are based on four weeks data