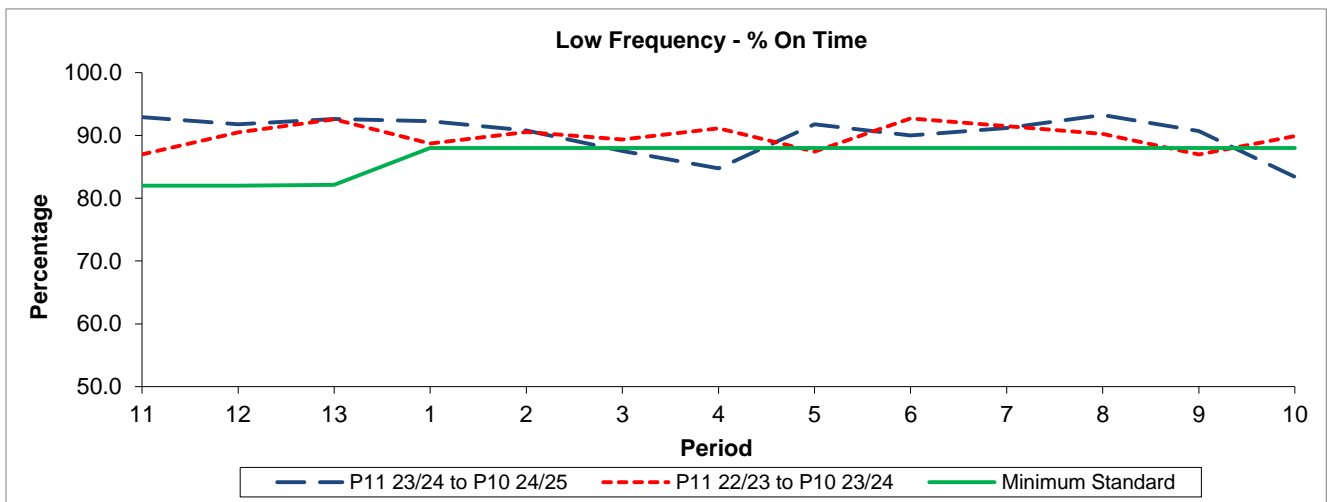


QSI & Mileage Performance Results

Route N2

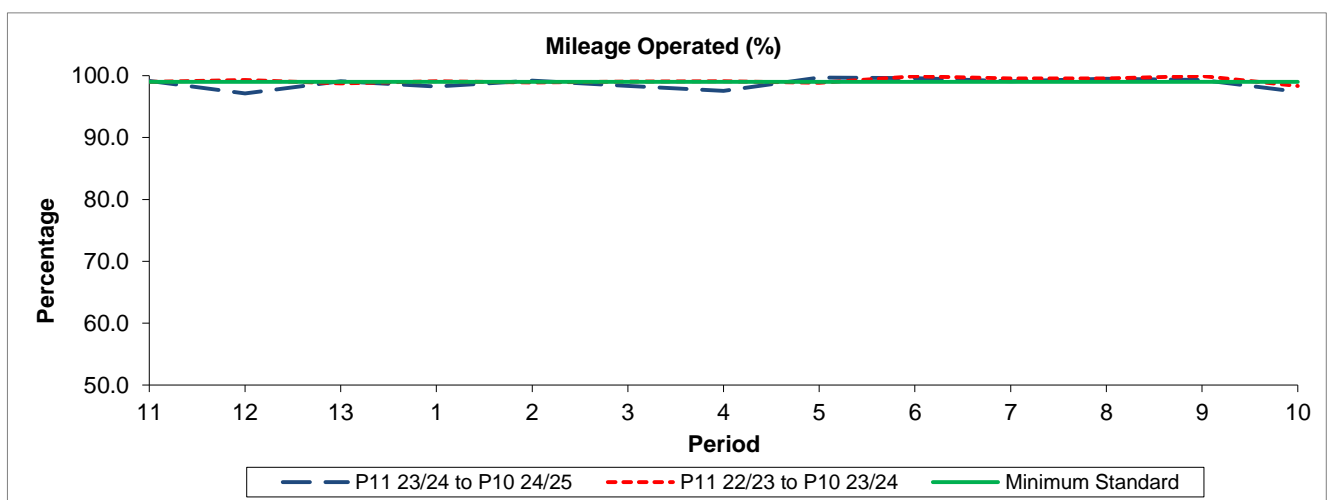
Reliability Performance



Period	11	12	13	1	2	3	4	5	6	7	8	9	10
P11 23/24 to P10 24/25	92.93	91.79	92.61	92.30	90.76	87.54	84.78	91.76	89.98	91.18	93.25	90.68	83.41
P11 22/23 to P10 23/24	86.97	90.49	92.59	88.72	90.56	89.34	91.14	87.44	92.70	91.49	90.26	86.97	89.90
Minimum Standard	82.00	82.00	82.12	88.00	88.00	88.00	88.00	88.00	88.00	88.00	88.00	88.00	88.00

% On Time performance figures are based on four weeks data

Mileage Performance



Period	11	12	13	1	2	3	4	5	6	7	8	9	10
P11 23/24 to P10 24/25	99.13	97.13	99.10	98.25	99.21	98.36	97.53	99.69	99.60	99.12	99.49	99.30	97.40
P11 22/23 to P10 23/24	98.99	99.28	98.72	99.08	98.91	99.07	99.08	98.86	99.91	99.54	99.55	99.94	98.33
Minimum Standard	99.00	99.00	99.00	99.00	99.00	99.00	99.00	99.00	99.00	99.00	99.00	99.00	99.00

Mileage Performance figures are based on four weeks data