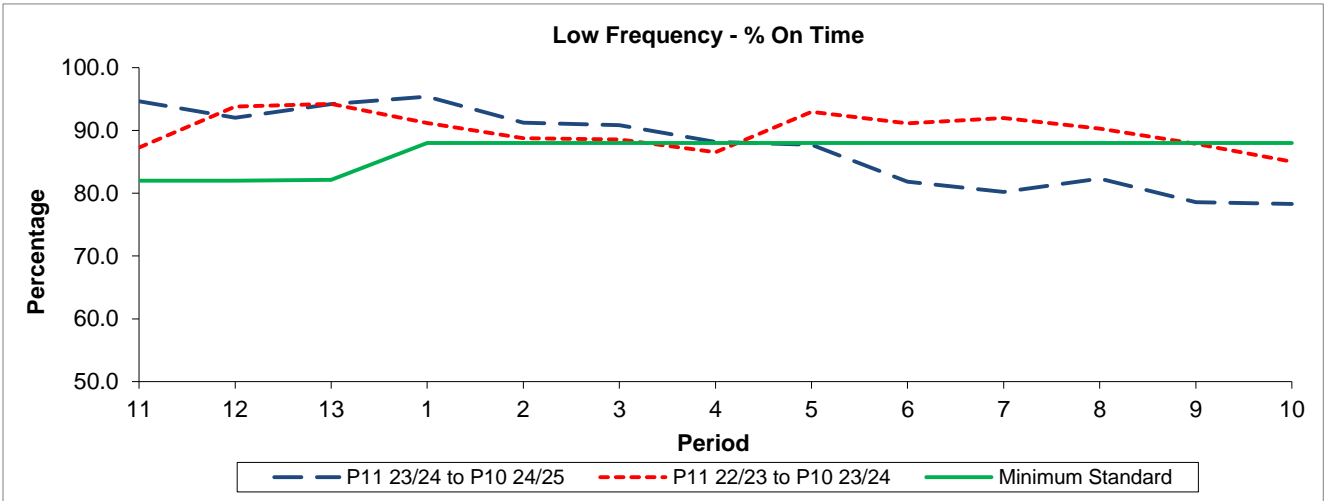


QSI & Mileage Performance Results

# Route N19

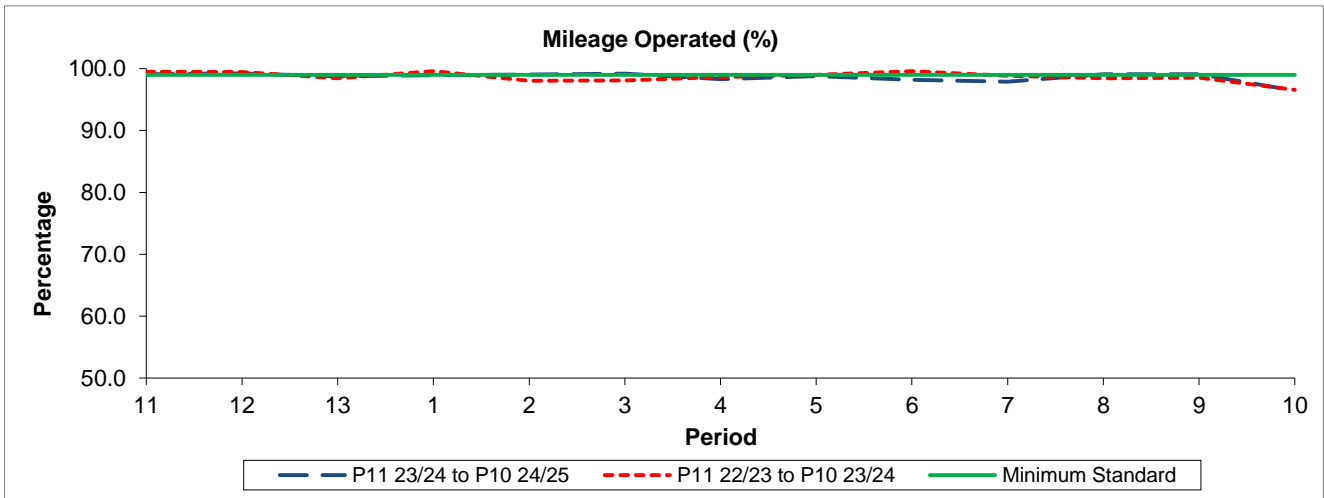
## Reliability Performance



Period	11	12	13	1	2	3	4	5	6	7	8	9	10
P11 23/24 to P10 24/25	94.64	92.01	94.20	95.39	91.22	90.83	88.15	87.71	81.83	80.21	82.34	78.59	78.29
P11 22/23 to P10 23/24	87.28	93.79	94.23	91.19	88.77	88.58	86.53	92.95	91.15	91.96	90.32	87.88	85.03
Minimum Standard	82.00	82.00	82.12	88.00	88.00	88.00	88.00	88.00	88.00	88.00	88.00	88.00	88.00

% On Time performance figures are based on four weeks data

## Mileage Performance



Period	11	12	13	1	2	3	4	5	6	7	8	9	10
P11 23/24 to P10 24/25	99.10	99.24	98.77	98.95	99.05	99.18	98.30	98.81	98.17	97.88	99.08	99.10	96.45
P11 22/23 to P10 23/24	99.52	99.43	98.43	99.58	98.06	98.11	98.66	99.02	99.60	98.87	98.46	98.54	96.57
Minimum Standard	99.00	99.00	99.00	99.00	99.00	99.00	99.00	99.00	99.00	99.00	99.00	99.00	99.00

Mileage Performance figures are based on four weeks data