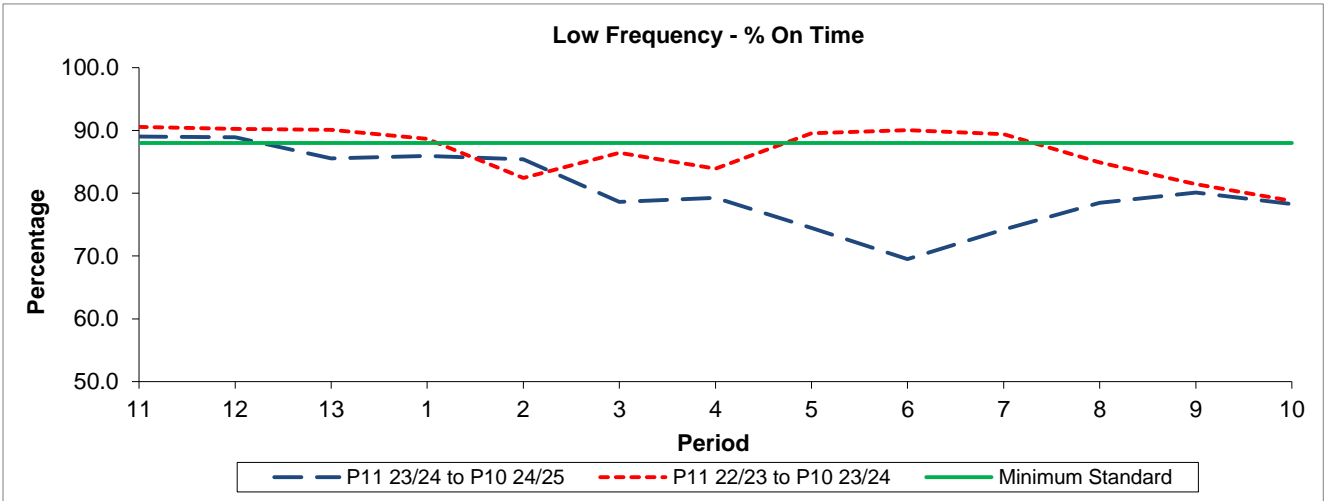


QSI & Mileage Performance Results

# Route N155

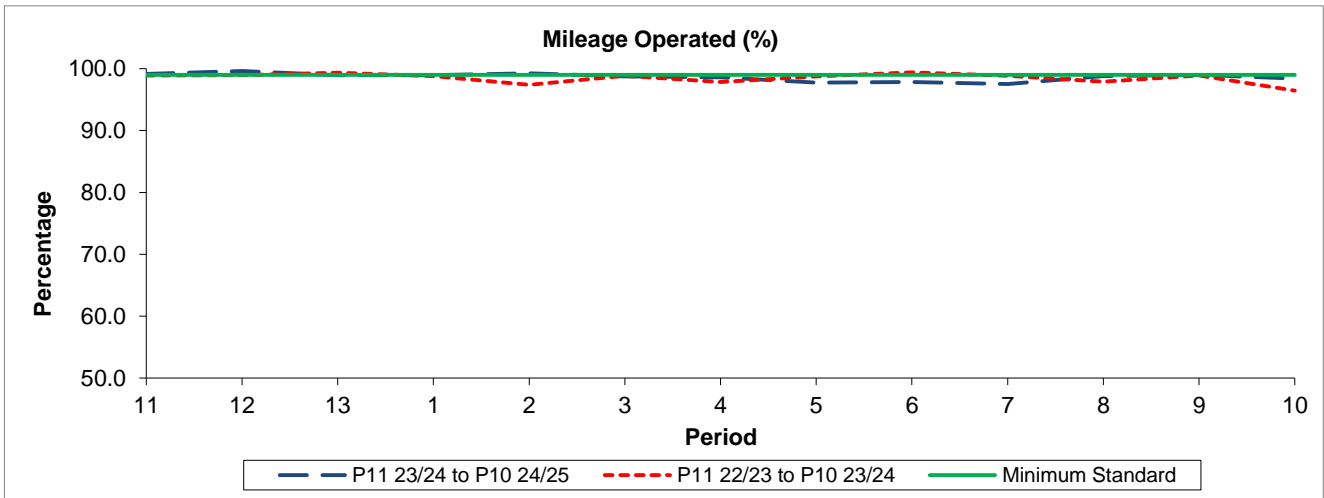
## Reliability Performance



Period	11	12	13	1	2	3	4	5	6	7	8	9	10
P11 23/24 to P10 24/25	89.03	88.91	85.55	85.94	85.38	78.64	79.29	74.45	69.51	74.20	78.47	80.09	78.30
P11 22/23 to P10 23/24	90.56	90.25	90.08	88.68	82.42	86.42	83.92	89.55	90.06	89.41	84.92	81.42	78.78
Minimum Standard	88.00	88.00	88.00	88.00	88.00	88.00	88.00	88.00	88.00	88.00	88.00	88.00	88.00

% On Time performance figures are based on four weeks data

## Mileage Performance



Period	11	12	13	1	2	3	4	5	6	7	8	9	10
P11 23/24 to P10 24/25	99.17	99.62	98.93	98.96	99.26	98.73	98.58	97.73	97.86	97.51	98.82	98.97	98.40
P11 22/23 to P10 23/24	98.90	98.94	99.36	98.80	97.40	98.86	97.84	98.75	99.40	98.83	97.90	98.91	96.45
Minimum Standard	99.00	99.00	99.00	99.00	99.00	99.00	99.00	99.00	99.00	99.00	99.00	99.00	99.00

Mileage Performance figures are based on four weeks data