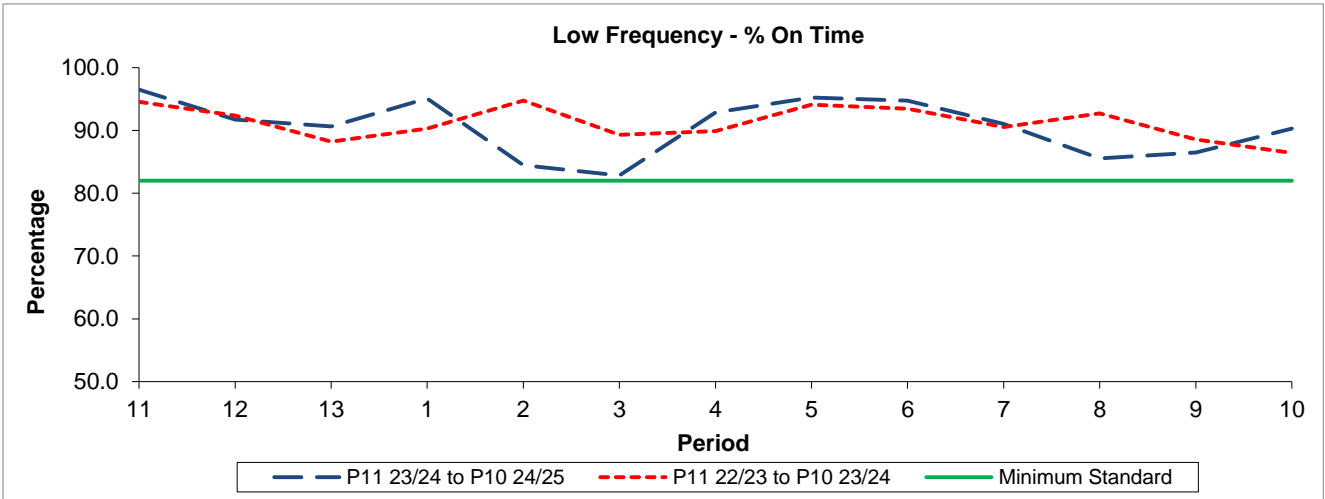


QSI & Mileage Performance Results

# Route N139

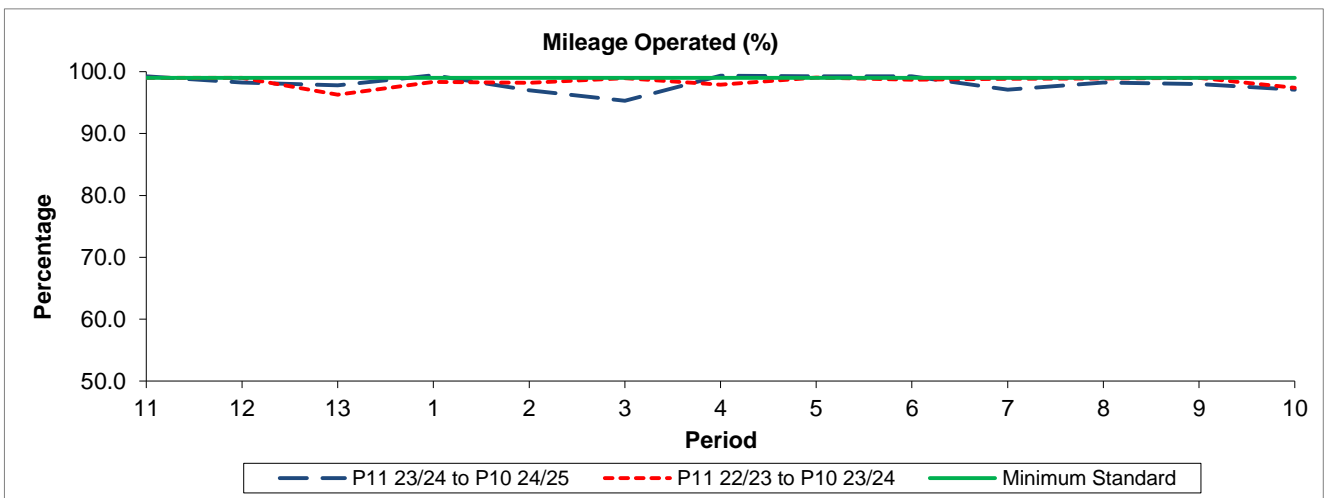
## Reliability Performance



Period	11	12	13	1	2	3	4	5	6	7	8	9	10
P11 23/24 to P10 24/25	96.49	91.72	90.63	95.10	84.45	82.83	92.89	95.24	94.75	91.04	85.55	86.49	90.31
P11 22/23 to P10 23/24	94.55	92.38	88.23	90.28	94.75	89.28	89.91	94.08	93.47	90.53	92.70	88.54	86.42
Minimum Standard	82.00	82.00	82.00	82.00	82.00	82.00	82.00	82.00	82.00	82.00	82.00	82.00	82.00

% On Time performance figures are based on four weeks data

## Mileage Performance



Period	11	12	13	1	2	3	4	5	6	7	8	9	10
P11 23/24 to P10 24/25	99.25	98.23	97.79	99.42	97.00	95.30	99.35	99.26	99.25	97.10	98.23	97.97	97.11
P11 22/23 to P10 23/24	98.98	98.99	96.28	98.33	98.18	98.95	97.88	99.05	98.70	98.84	98.91	99.00	97.37
Minimum Standard	99.00	99.00	99.00	99.00	99.00	99.00	99.00	99.00	99.00	99.00	99.00	99.00	99.00

Mileage Performance figures are based on four weeks data