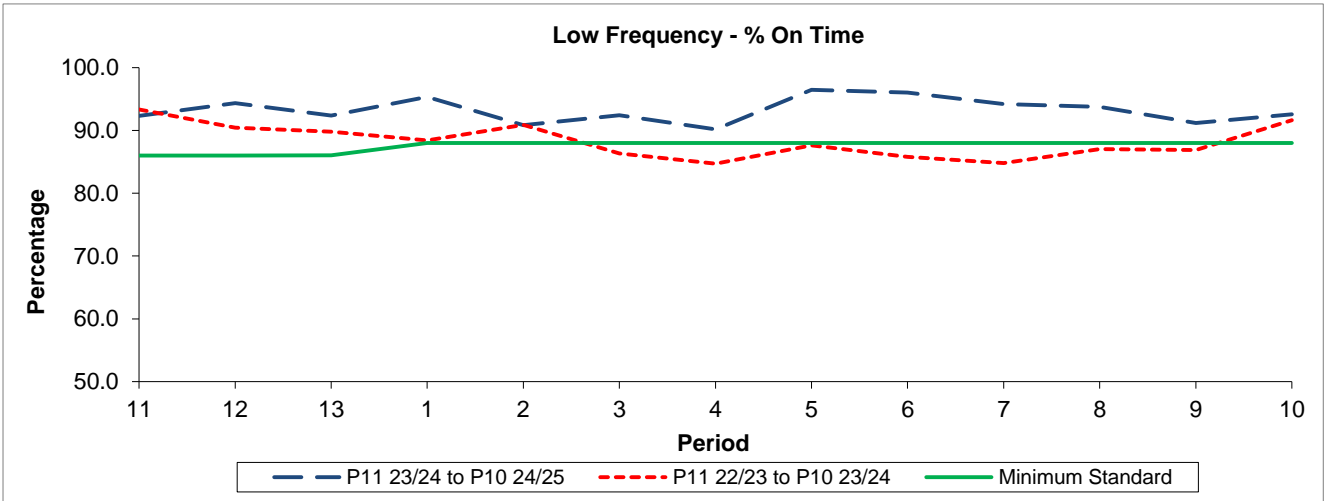


QSI & Mileage Performance Results

Route N113

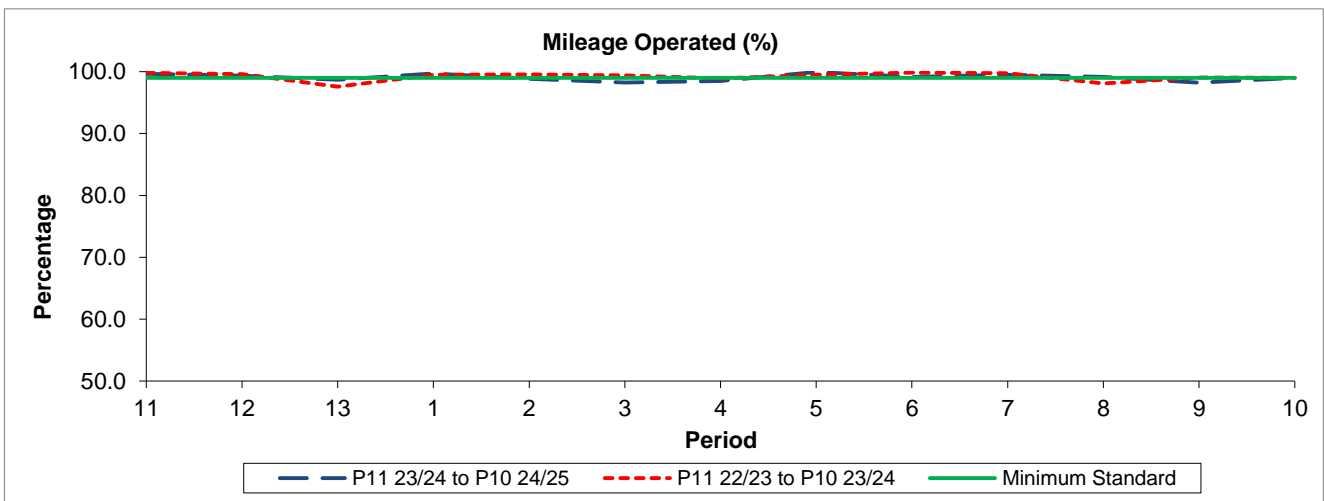
Reliability Performance



Period	11	12	13	1	2	3	4	5	6	7	8	9	10
P11 23/24 to P10 24/25	92.33	94.36	92.38	95.35	90.84	92.44	90.17	96.47	96.03	94.21	93.78	91.18	92.57
P11 22/23 to P10 23/24	93.34	90.45	89.82	88.41	90.88	86.34	84.71	87.63	85.77	84.80	87.01	86.87	91.61
Minimum Standard	86.00	86.00	86.04	88.00	88.00	88.00	88.00	88.00	88.00	88.00	88.00	88.00	88.00

% On Time performance figures are based on four weeks data

Mileage Performance



Period	11	12	13	1	2	3	4	5	6	7	8	9	10
P11 23/24 to P10 24/25	99.63	99.35	98.69	99.72	98.87	98.24	98.52	99.94	99.15	99.48	99.13	98.22	99.02
P11 22/23 to P10 23/24	99.82	99.62	97.58	99.52	99.53	99.38	98.91	99.52	99.84	99.75	98.08	99.03	98.98
Minimum Standard	99.00	99.00	99.00	99.00	99.00	99.00	99.00	99.00	99.00	99.00	99.00	99.00	99.00

Mileage Performance figures are based on four weeks data